

**DESPIECE / PART LIST**

**TX T 2002**

**125 / 200 / 250 / 280**

**MOTOR  
ENGINE**

**MASCOATS**



# MOTOR

Combinado móvil americano / American mobile



Cable Módem / Fixed mobile



Selector compatible / Shift cam



Carfax / Carfaxing



Excesos de / Excesses



Encendido / Ignition

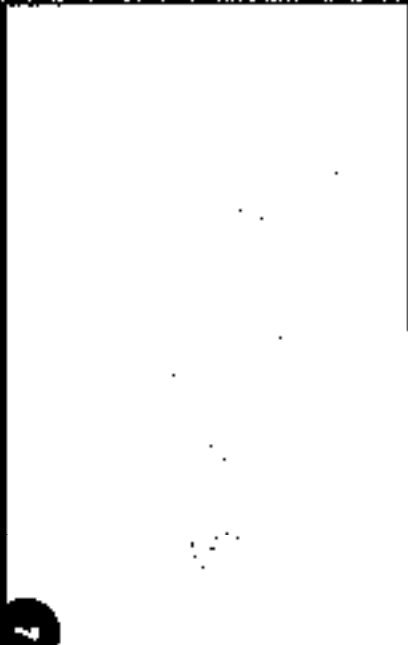
100 cc / 100 cc



# DESPIECE

# ENGINE

Cylinder / Crankshaft 125 cc / 700 cc



Cylinder / Crankshaft

125 cc / 700 cc



Cylinder / Crankshaft 250 cc / 250 cc



Engine oil sump / Gear set



Crankshaft / Piston

Crankshaft / Piston

Engine oil sump / Water pump

9

8

12

11

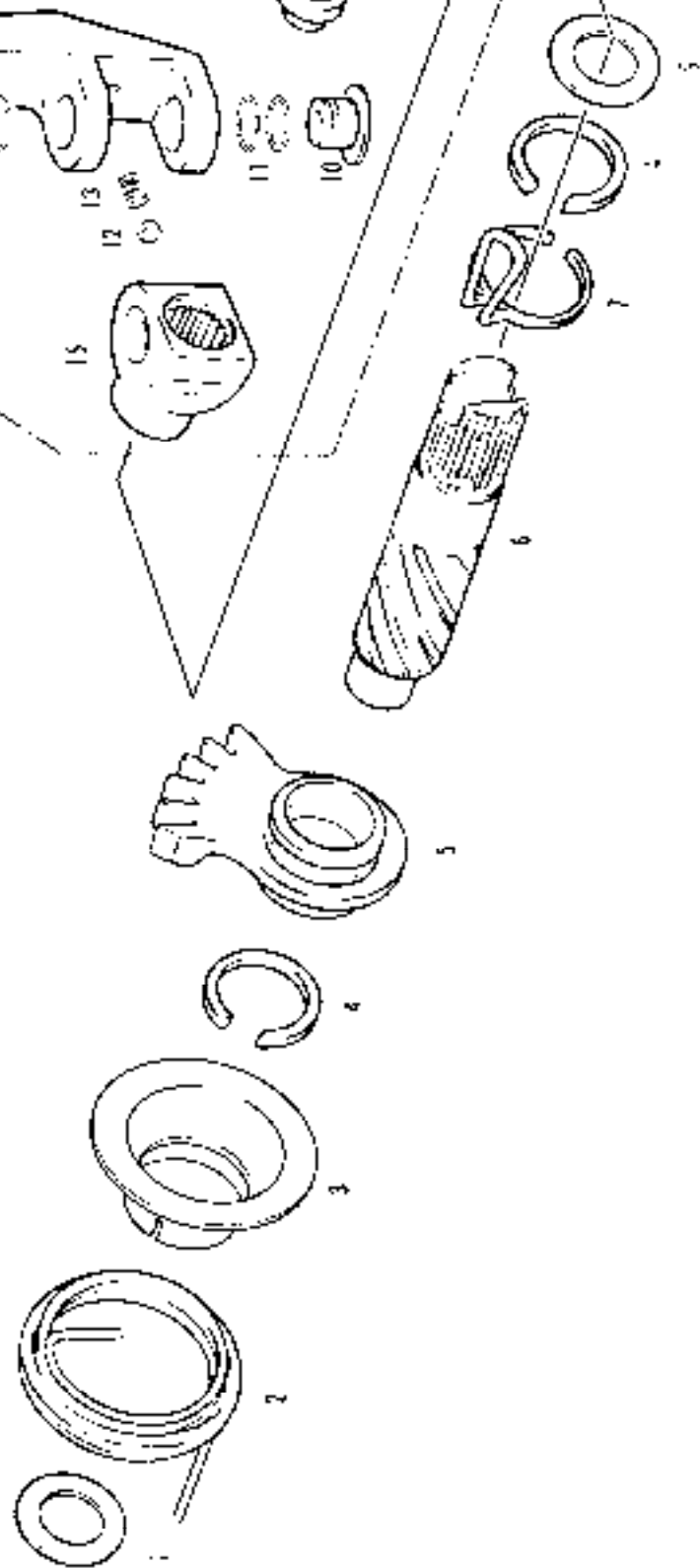
10

7

## PART LIST



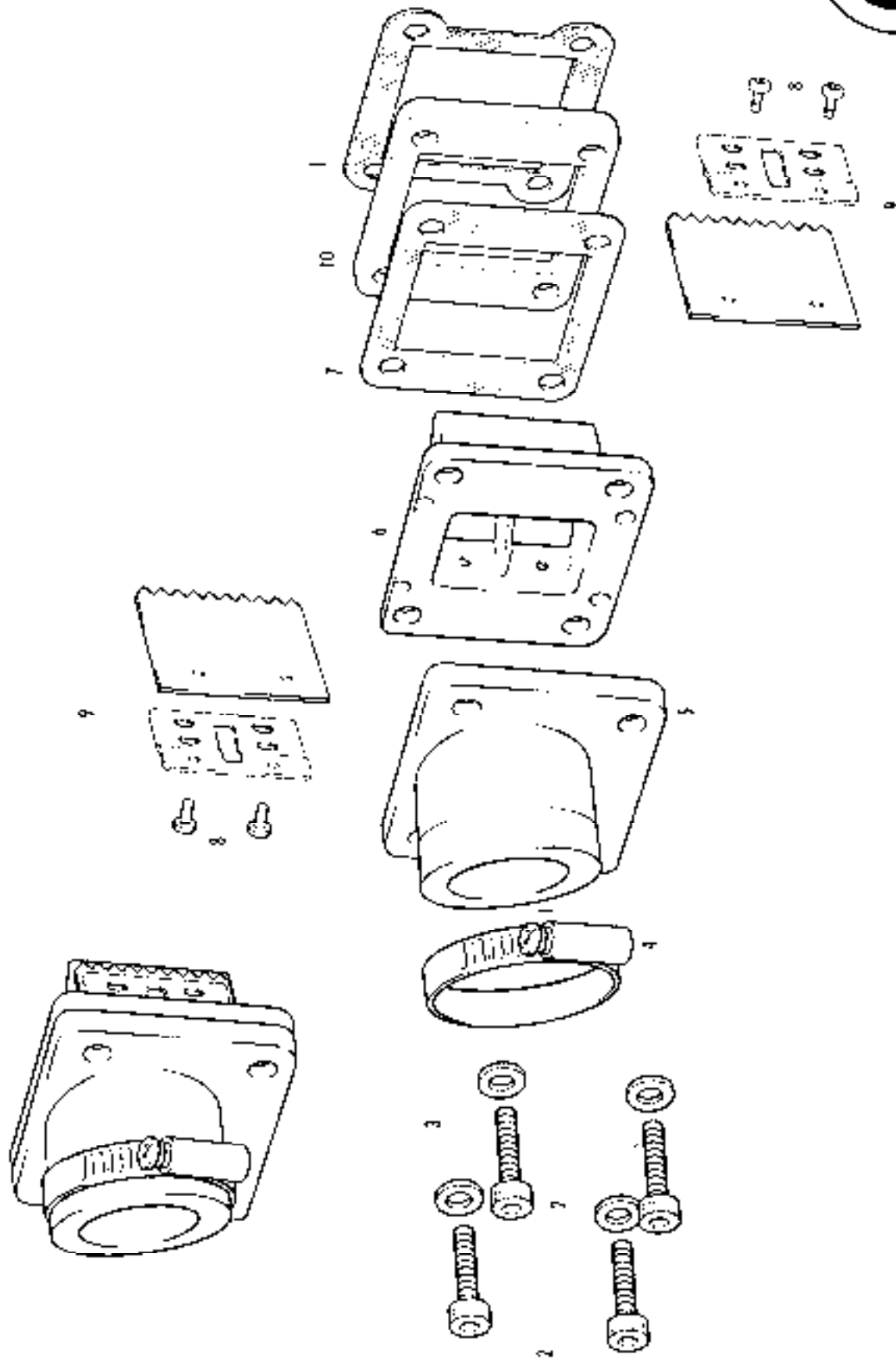
# Conjunto pedal arranque / Quickstart set



N°	DESCRIPCION	125 / 200 / 250 / 280	Cant.
1	ARANDELA 14X25X0.5 / 14X25X0.5 WASHER	T4001425	1
2	MUELLE ARRANQUE TRIAL SXXI / PEDAL KICKSTART SPRING	MT280226007	1
3	CENTRAJODR MUELLE ARRANQUE / KICKSTART SPRING BUSHING	MT280226053	1
4	CIRCLIP PARA EJE 18 MM / AXIS CIRCLIP	MT280226017	2
5	PIÑON ARRANQUE TRIAL 2002 / KICKSTART GEAR	MT280226002	1
6	EJE ARRANQUE TRIAL 2002 / KICKSTARTER SHAFT	MT280226003	1
7	MUELLE FRICCION ARRANQUE / FRICTION KICKSTART SPRING	MT280226006	1
8	CASQUILLO PEDAL ARRANQUE / KICKSTART PEDAL BUSHING	MT280226066	1
9	ARANDELA 18.2X24X0.5 / 18.2X24X0.5 WASHER	T4001824	1
10	TUERCA PEDAL ARRANQUE / KICKSTART PEDAL NUT	MT280226065	2
11	TORICA NBR 12X1 / NBR O'RING	MT280226063	4
12	BOLA MUNEQUILLA PEDAL / KICKSTART PEDAL BALL	ME250036062	1
13	MUELLE MUNEQUILLA PEDAL / KICKSTART PEDAL SPRING	ME250036066	1
14	UFK M6X25 ZINCAT / M6X25 UFK	T0316025	2
15	MUNEQUILLA PEDAL ARRANQUE / KICKSTART PEDAL BASE	MT280226061	1
16	PEDAL AHRANQUE / KICKSTART PEDAL ARM	MT120226060	1
17	CASQUILLO SUJECION PEDAL / KICKSTART PEDAL BUSHING	MT280226068	1
18	CTO. PEDAL ARRANQUE TRIAL 2002 / KICKSTART PEDAL COMPLETE	MT120226060C	1
20	ALLEN M6X35 ZINCAT / M6X35 ZINCAT ALLEN BOLT	T0306035	1

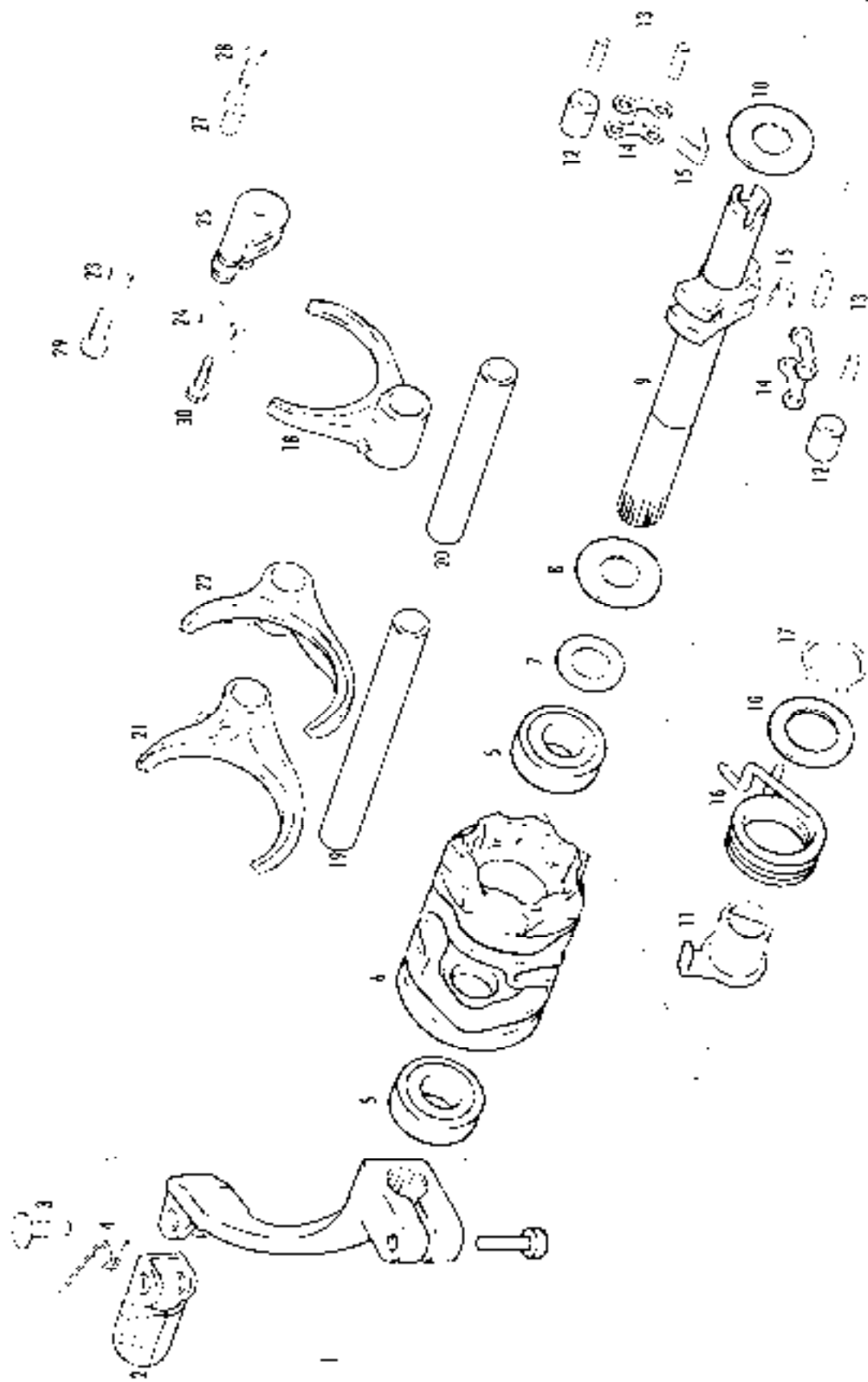
**Motor 1**

# Caja láminas / Reed valve

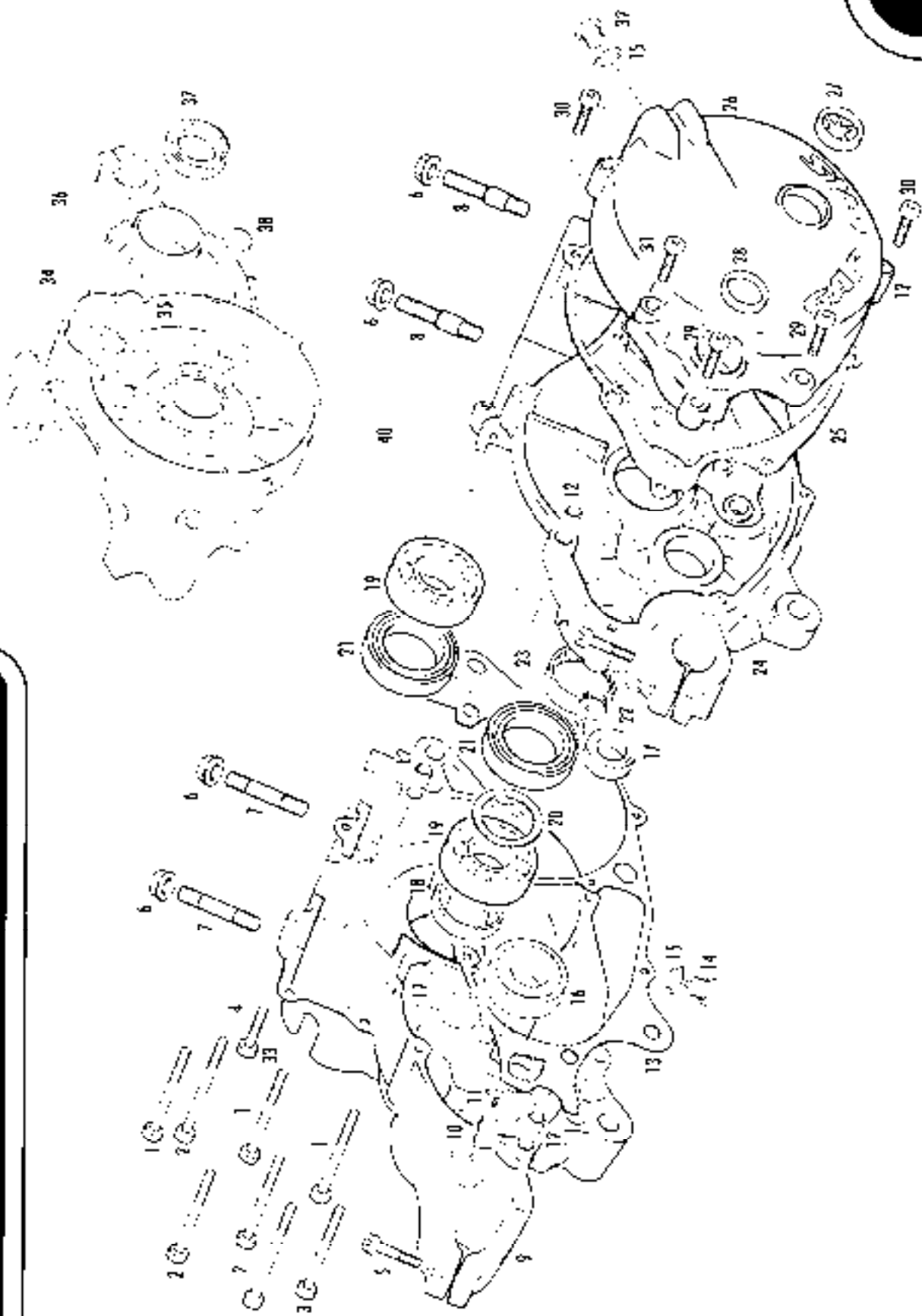


N° DESCRIPCION	125 / 200	250 / 280	Cant.
1 JUNTA CAJA LAMINAS THIAL SXXI / REED VALVE GASKET /		MT280244005	1
2 ALLEN 5X30 ZINCAIDO NEGRO / 5X30 ZINCA / BLACK ALLEN		T0305030N	4
3 ARANDELA 5X12X1.5 / 5X12X1.5 WASHER		T400501P	4
4 ABRAZADERA CAJA LAMINAS 30X45 / CLAMP 30X45		B640005	1
5 TUBERA ADMISION THIAL / INLET MANIFOLD	MT120216131	M01615004	1
6 CAJA LAMINAS THIAL SXXI / REED BLOCK ASSEMBLY		M01617200	1
7 JUNTA TUBERA 0.5 / MANIFOLD GASKET		M04416003	1
8 TORNILLO PHILIPS MAX8 / MAX8 PHILIPS SCREW		T0604008	4
9 JUEGO LAMINAS ADMISION / REEDS SET		M01616000	1
10 DISTANCIADOR CAJA LAMINAS / DIST. REED BLOCK ASSY.		MT280216221	1

# Selector cambio / Shift cam



N°	DESCRIPTION	125 / 200 / 250 / 280	QTY.
1	CTO. PEDAL CAMBIO / GEAR PEDAL COMPLETE	MT280238026	1
2	PUNTERA PEDAL CAMBIO / GEAR PEDAL END	ME25636027	1
3	REMACHE PUNTERA CAMBIO / RIVOT PEDAL END	ME25636030	1
4	MUELLE PUNTERA PEDAL CAMBIO / PEDAL END SPRING	M1121000	1
5	COJINETE 12X24X6 22 DESMO / 12X24X6 22 DESMO BEARING	MT280238032	2
6	DESMODROMICO / SHIFT DRUM	MT280238031	1
7	ARANDELA 12.2X18X0.5 / 12.2X18X0.5 WASHER	T4001216	1
8	ARANDELA 12.2X24X0.5 / 12.2X24X0.5 WASHER	T4001224	1
9	EJE SELECTOR TRIAL / SHIFT SHAFT	MT280238036	1
10	ARANDELA 10.2X24X0.5 / 10.2X24X0.5 WASHER	T4011024	2
11	POSICIONADOR EJE SELECTOR / SHIFT SHAFT CENTER LOCATOR	MT280238037	1
12	RODILLO TRINQUETE SELECTOR / RATCHET ROLLER	MT280238040	2
13	AGUJA 3X13.8 / 3X13.8 NEEDLE	MT280238048	4
14	TRINQUETE SELECTOR / RATCHET ARM SELECTOR	MT280238036	2
15	MUELLE TRINQUETE SELECIION / RATCHET SEL. SPRING	MT280238039	2
16	MUELLE EJE SELECTOR / SHIFT SHAFT RETURN SPRING	MT280238035	1
17	CIRCLIP E10 EJE / E10 SHAFT CIRCLIP	MT280238042	1
18	HORQUILLA PRIMARIA / SHIFT FORK PRIMARY	MT280238009	1
19	EJE HORQUILLA LARGO / LONG FORK SHAFT	MT280238044	1
20	EJE HORQUILLA CORTO / SHORT FORK SHAFT	MT280238045	1
21	HORQUILLA 24 5/8 / 24 5/8 FORK	MT280238007	1
22	HORQUILLA 1/3 / 1/3 FORK	MT280238008	1
23	TOPE MUELLE FUADOR / SPRING REST POST	MT280238029	1
24	MUELLE FUADOR MARCHAS / GEAR SELECTOR SPRING	M1280238034	1
25	FUADOR MARCHAS / GEAR SELECTOR ARM AND ROLLER	MT280238033C	1
27	TOPP MUELLE EJE SELECTOR / SELECTOR SPRING TOP SHAFT	MT280238050	1
28	ALLEN 5X25 ZINCADO NEGRO / 5X25 ZINCAT BLACK ALLEN	T0305025N	4
29	ALLEN 5X20 ZINCADO NEGRO / 5X20 ZINCAT BLACK ALLEN	T0305020N	1
30	HEXAGONAL 5X26 CON AHANDELA / HEXAGONAL BOLT / WASHER	RT280010086	1

**Carter / Crankcase**

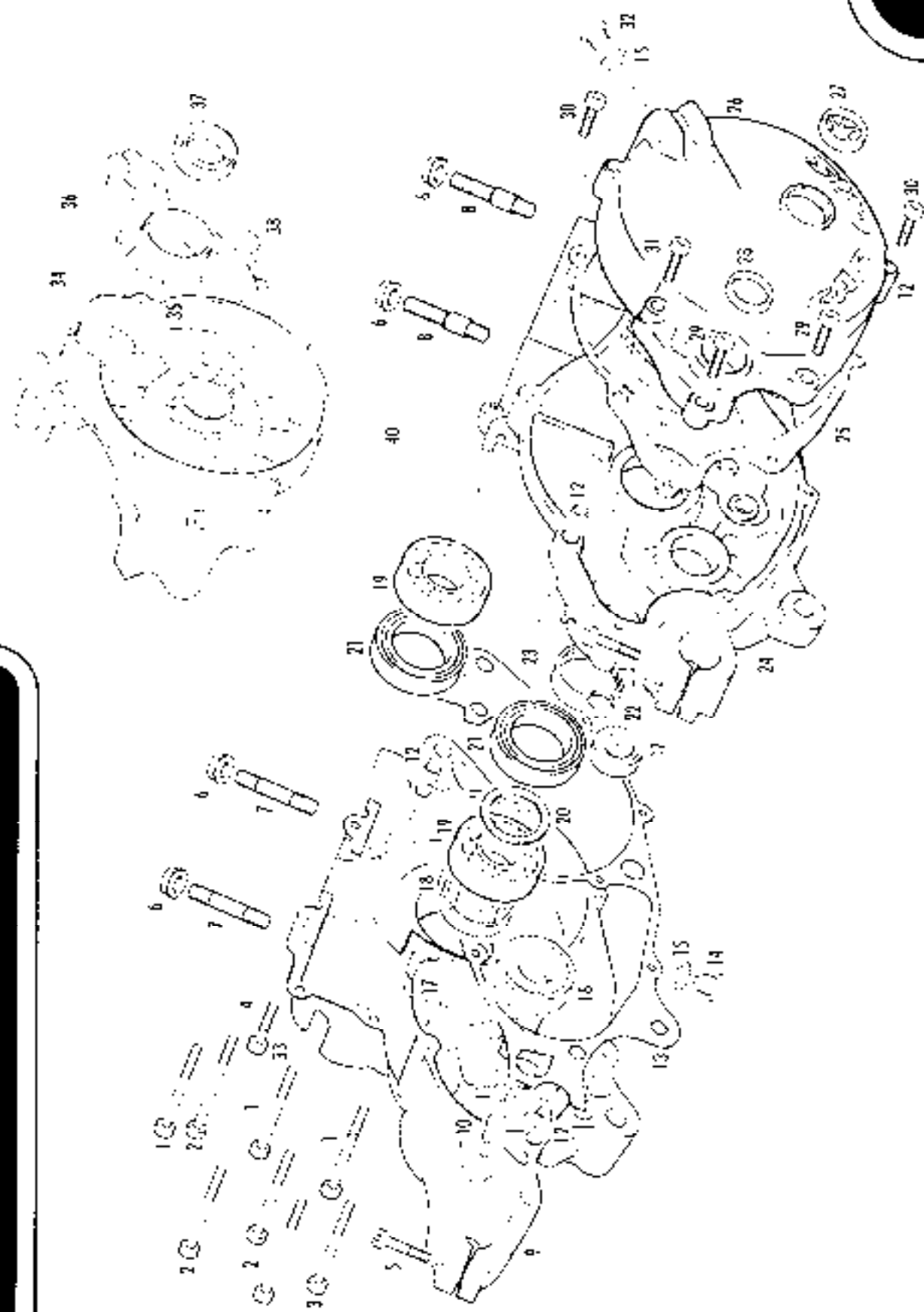
Nº DESCRIPCIÓN

125 / 200 / 250 / 280

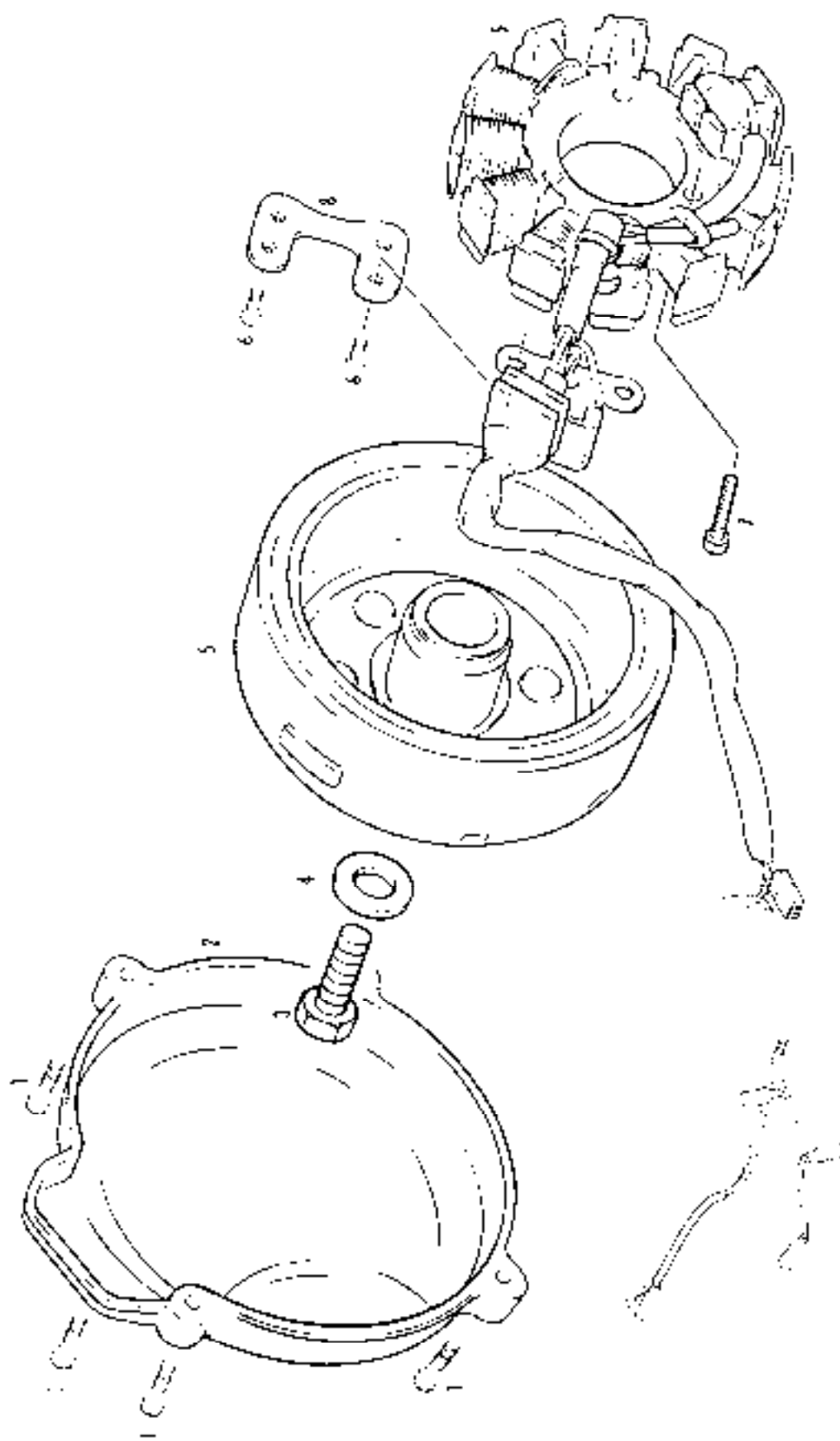
Cant.

1	ALLEN 5X85 ZINCADO NEGRO / 5X85 BLACK ALLEN BOLT	TO315065	3
2	ALLEN 5X55 ZINCADO NEGRO / 5X55 BLACK ALLEN BOLT	TO305055	4
3	ALLEN 5X75 ZINCADO NEGRO / 5X75 BLACK ALLEN BOLT	TO315075	1
4	ALLEN 5X35 ZINCADO NEGRO / 5X35 BLACK ALLEN BOLT	TO305035N	1
5	ALLEN 5X20 ZINCADO NEGRO / 5X20 BLACK ALLEN BOLT	TO305020N	2
6	TUERCA CILINDRO B.B ESP / CYLINDER NUT	MO1613001	4
7	ESPARRAGO CILINDRO / BASE STUD CYLINDER LEFT	MT280216023	2
8	ESPARRAGO CON CENTRAJE / BASE STUD CYLINDER RIGHT	MT280216056	2
9	CARTER MG. IZDO TRIAL SXXI / LEFT CRANKCASE HALF	MT280210001	1
10	TOPE ARRANQUE TRIAL / STOP KICKSTART PEDAL	MT280226011	1
11	ALLEN 5X15 / 5X15 ALLEN BOLT	TO305015N	1
12	CASO CENTRALDOR CARTER 8X9X14 / CRANKCASE RUSHING	MO1017000	4
13	JUNTA CARTER CENTRAL 0.2MM / CENTER CRANKCASE GASKET	MT280244001	1
14	TAPON VACIADO ACEITE CON IMAN / MAGNETIC OIL DRAIN PLUG	MO1016005	1
15	ARANDELA COBRE 12X18X1.5 / WASHER	ME25810030	2
16	COJINETE 25X47X12 / 25X47X12 BEARING	MT280236159	1
17	COJINETE 15X32X9.27 CAMBIO / 15X32X9.22 GEAR BEARING	MT280236180	2
18	RETEN 25X35X7 TEFLON CIGÜENAL IZDO. / OIL SEAL CRANK SHAFT	MT280212009	1
19	COJINETE CIGÜENAL 6205 ETN9 / ETN9 CRANKSHAFT BEARING	MO1216002?2	2
20	ARANDELA 52X42X0.2X5 RETEN CIGÜENAL / 52X42X0.2X5 WASHER	TO4052042	1
21	REFEN LADO DROCHO CIGÜENAL TB2J / SEAL RIGHT CRANK SHAFT	ME250112008	2
22	COJINETE BK1412 ARRANQUE TRIAL / KICKSTART BEARING	MT280226067	1
23	COJINETE 35X45X12 NO (EJE PRIMARIO) / 35X45X12 BEARING	MT280236158	1
24	CARTER MG DROCHO TRIAL SXXI / RIGHT CRANKCASE	MT280210000	1
25	JUNTA TAPA EMBRAGUE / CLUTCH COVER GASKET	MT280244002	1
26	TAPA EMBRAGUE MG TRIAL / CLUTCH COVER	MT280232001	1
27	VISOR NIVEL ACEITE FC400-4T / OIL LEVEL SIGHT GLASS	MFS400110015	1
28	RETEN 18-24-4 TRIAL 2002 / 18-24-4 KICKSTART SHAFT SEAL	MT280226016	1

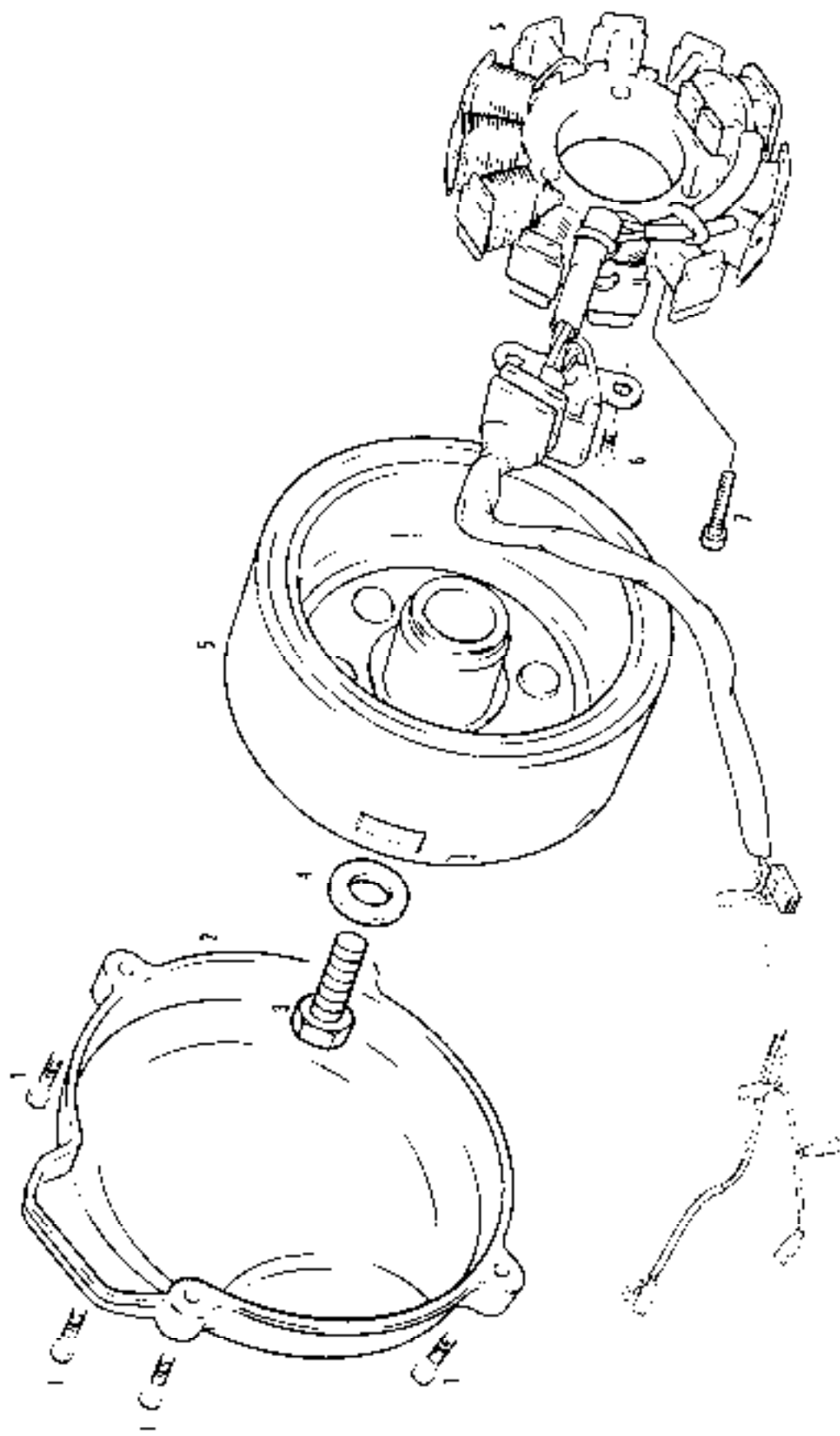
# Carter / Crankcase



N°	DESCRIPTION	QTY	UNIT
29	ALLEN 5X25 ZINCADO NEGRO / 5X25 BLACK ALLEN BOLT	2	TO305025N
30	ALLEN 5X30 ZINCADO NEGRO / 5X30 BLACK ALLEN BOLT	2	TO305030N
31	ALLEN 5X40 ZINCADO NEGRO / 5X40 BLACK ALLEN BOLT	1	TO305040N
32	TAPON LLENADO ACEITE / OIL FILL PLUG	1	MO1016002
33	ARANDELA 5X9X1,5 COBRE / 5X9X1,5 WASHER	1	T4000503
34	TUBO DESVAPORIZADOR / DESVAP. HOSE	1	MT280210012
35	DESVAPORIZADOR / DESVAP.	1	MIT50010012
36	TAPON PASO ACEITE CARTER / OIL CARTER PLUG	1	MT280210021
37	RETEN 30X10X7 / 30X10X7 SEAL	1	ME25636024
38	RETEN EJE SECTOR / AXLE SEAL	1	MT280236048



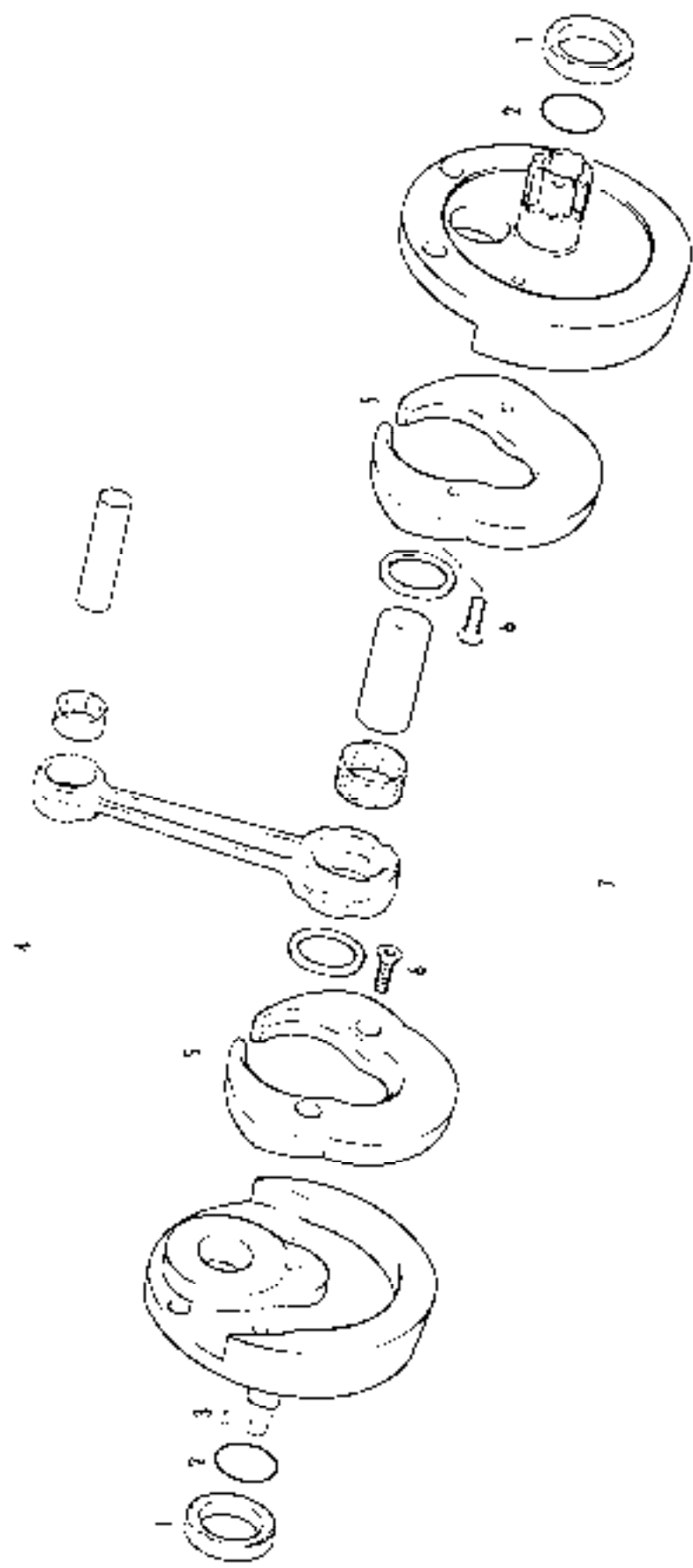
N°	DESCRIPCION	125 / 200	Cant.
1	ALLEN 5X20 / 5X20 ALLEN BOLT	T0305020	4
2	TAPA ENCENDIDO THIAL 5X11 : COVER FLY-WHEEL	MT280210004	1
3	TORNILLO M:0X25 / M10X25 SCREW	30101025:2	3
4	ARANDELA GRUESA 10X23X4 / 10X23X4 WASHER	T4001024	1
5	VOLANTE MAGNETICO FP8102 DIGITAL : DIGITAL IGNITION FLY-WHEEL	MT120234005	1
6	ALLEN UFK 5X10 / UFK 5X10 ALLEN BOLT	T0315010	4
7	ALLEN UFK NEGRO 5X25 / UFK 5X25 BLACK ALLEN BOLT	10315025N	3
8	ADAPTADOR PICK-UP ENCENDIDO THIAL 125 : 125 PICK-UP BRACKET	MT120234017	1



**Nº DESCRIPCIÓN**

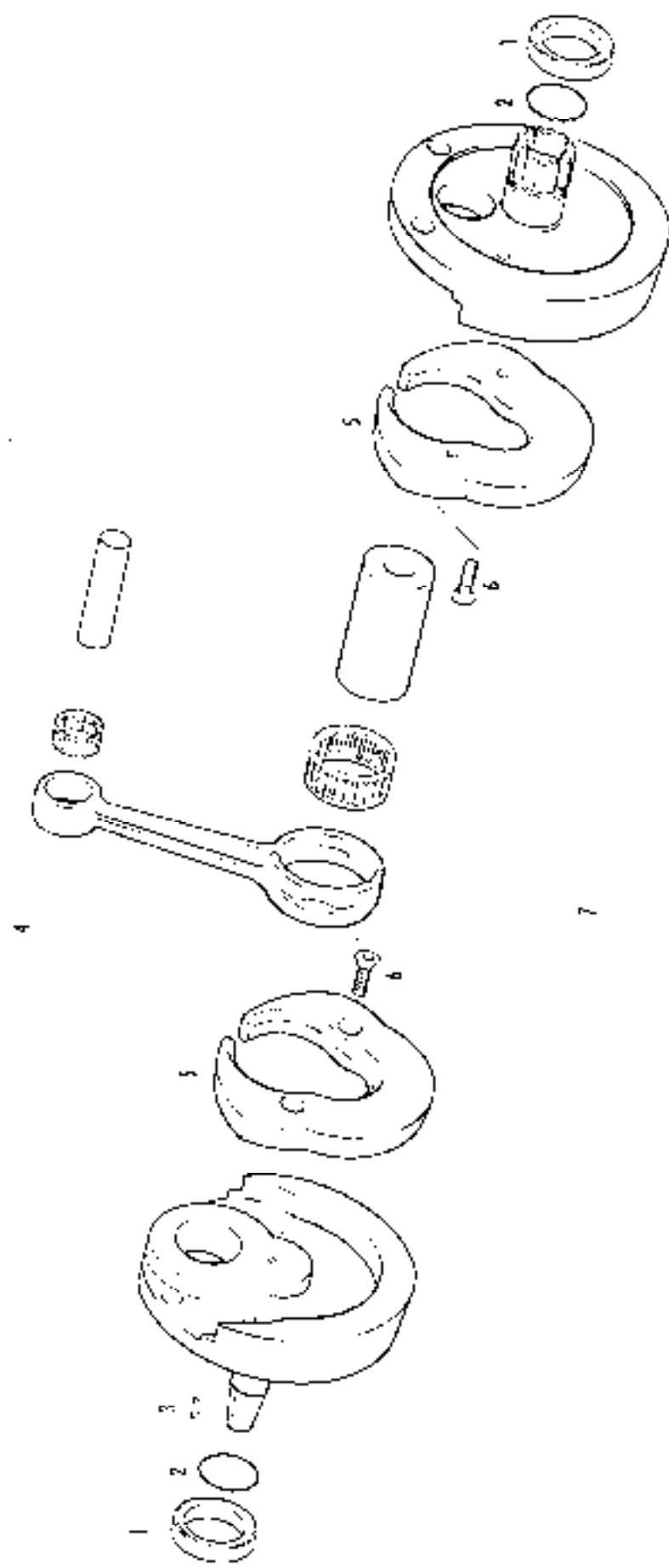
	<b>250 / 280</b>	<b>( unid. )</b>
1 ALLEN 5X20 / 5X20 ALLEN BOLT	TO305020	4
2 TAPA ENGENDIDO TRIAL SXXI / COVER FLY-WHEEL	MT280710004	1
3 TORNELO M10X25 / M10X25 SCREW	TO1010252	1
4 ARANDELA GRUESA 10X23X4 / 10X23X4 WASHER	YAG31024	1
5 VOLANTE MAGNETICO TP8302 DIGITAL / DIGITAL IGNITION FLY-WHEEL	MT280734005	1
6 ALLEN UFK 5X10 / UFK 5X10 ALLEN BOLT	10315010	2
7 ALLEN UFK NEGRO 5X25 / UFK 5X25 BLACK ALLEN BOLT	10315025N	3

**Cigüeñal / Crankshaft 125 cc. / 200 cc.**



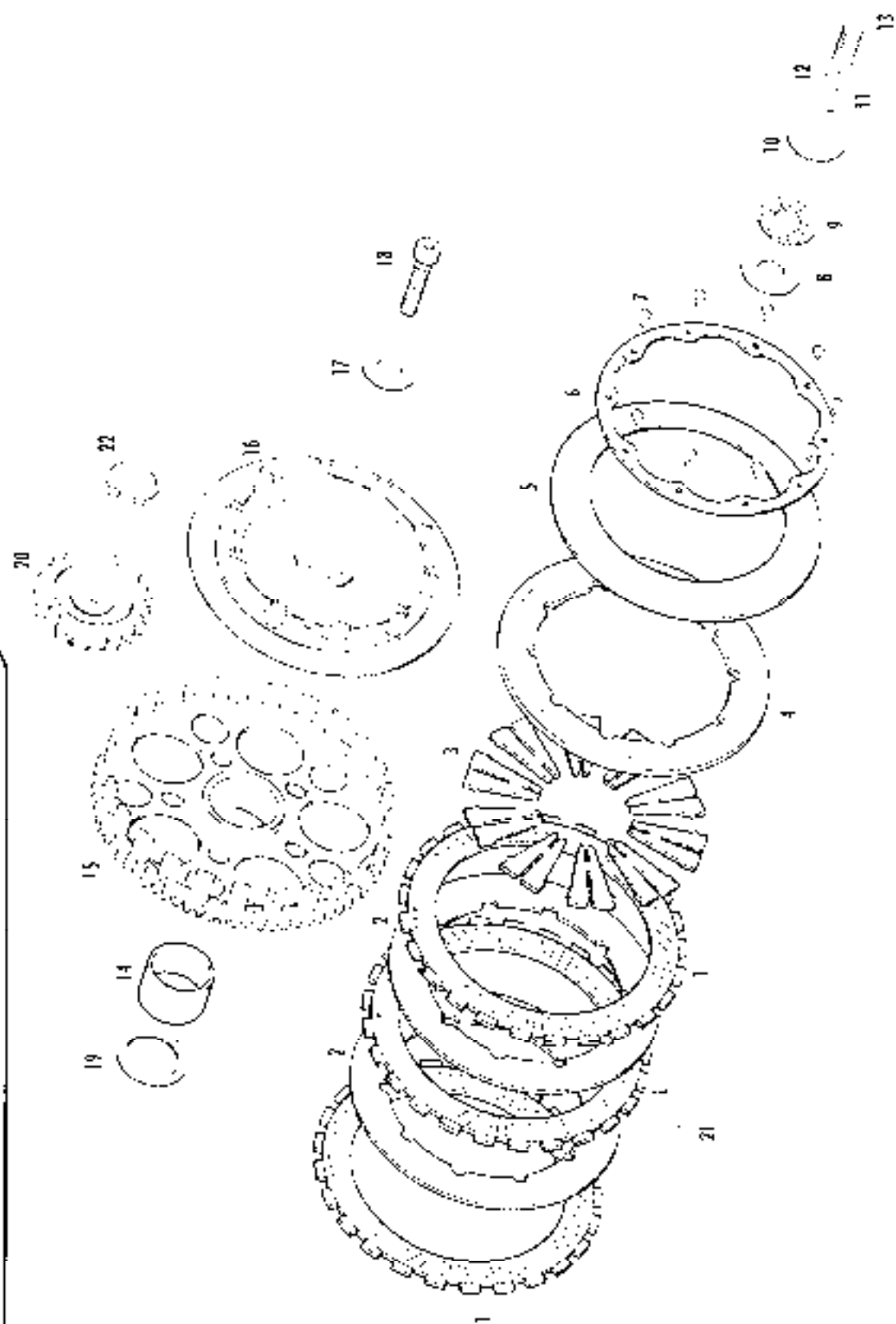
N° DESCRIPCION	125 / 200	Cant.
1 CASQUILLO CIGÜENAL TRIAL / CRANKSHAFT BUSHING	MT280212024	2
2 TOPICA 25X1.5 NBR / NBR 25X1.5 O-RING	MT280212025	2
3 CHAVETA D10X3X3.7 TRIAL 2D02 / D10X3X3.7 KEY	MT280234016	1
4 CONJUNTO BIELA / CONNECTING ROD KIT, REPAIR	MT120212100	1
5 NYLON CONTRAPESO / COUNTERWEIGHT NYLON	MT120212021	2
6 ALLEN CONICO UN15933 M6X16; M6X16 ALLEN BOLT	BE25618029	4
7 CTO. CIGÜENAL TRIAL SXXI / CRANK SHAFT ASSEMBLY COMPLETE	MT120212000C	1

**Cigüeñal / Crankshaft 250 cc. / 280 cc.**



N° DESCRIPCIÓN	CANT / UNID	CANT.
1 CASQUILLO CIGÜENAL TRIAL 280 / CRANKSHAFT BUSHING	MT280212024	2
2 TORICA 25X1.5 NBR / NBR 25X1.5 O'RING	MT280212025	2
3 CHAVETA D10X3X3 / TRIAL 2002 / D10X3X3 7 KEY	MT280234016	1
4 CONJUNTO BIELA / CONNECTION ROD KIT, REPAIR	MT280212100	1
5 NYLON CONTRAPESO / CONNECTION NYLON	MT280212021	2
6 ALLEN CONICO UN15933 M6X16 / ALLEN BOLT	BE25618029	4
7 CTO. CIGÜENAL TRIAL SXX1 / CRANK SHAFT ASSEMBLY COMPLETE	MT280212000	1

# Embrague / Clutch

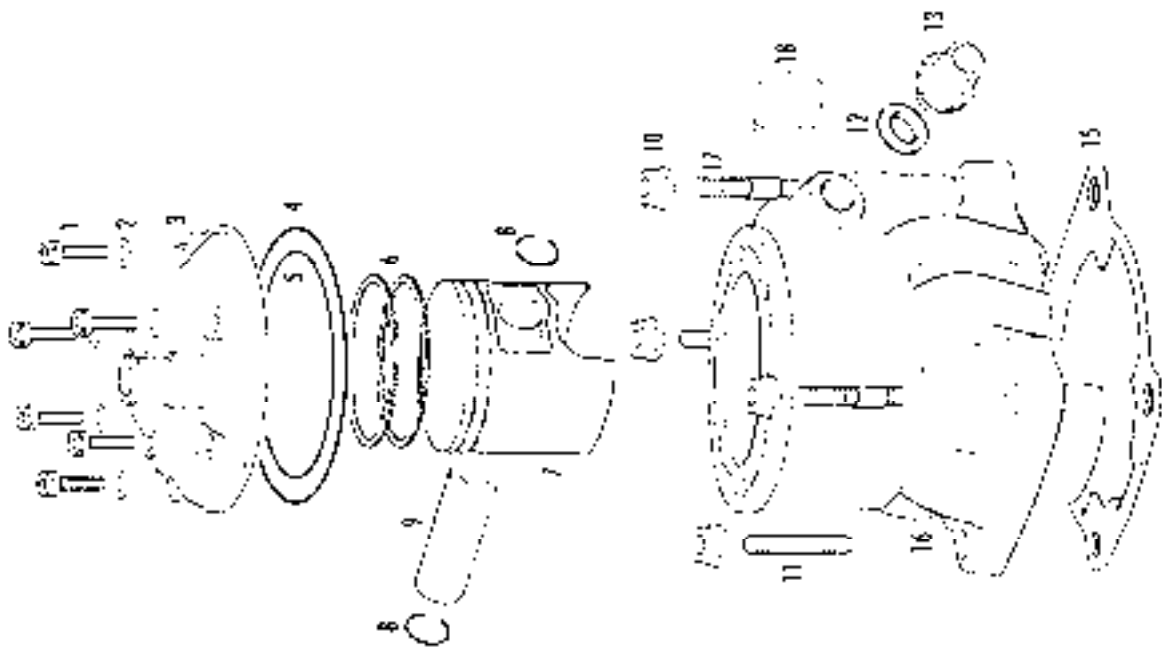
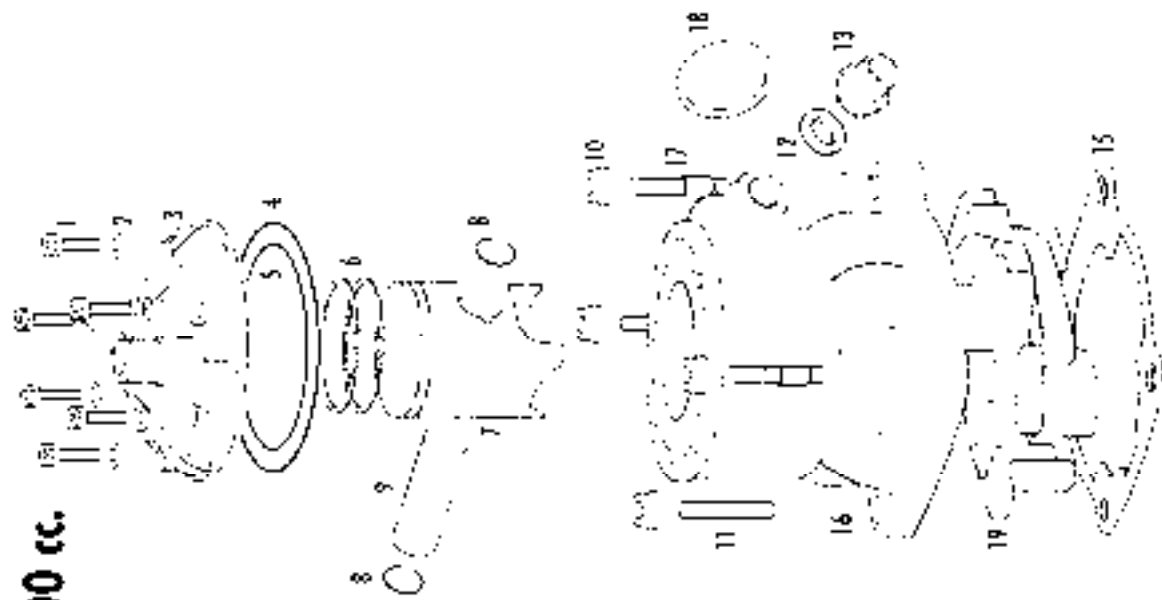


Nº	DESCRIPTION	125 / 200 / 250 / 280	Quant.
1	DISCO EMBRAGUE FORRADO TRIAL SXXI : CLUTCH DISC FIBER	MT2802322051	3
2	DISCO EMBRAGUE ACEHO TRIAL SXXI : CLUTCH DISC STEEL	MT2802322050	2
3	DESMULTIPLICADOR EMBRAGUE TRIAL : CLUTCH RELEASE ARM	MT2802322070	10
4	PRENSA EMBRAGUE TRIAL SXXI : PRESSURE PLATE	MT2802322006	1
5	MUELLE EMBRAGUE TRIAL : CLUTCH SPRING	MT2802322015	1
6	SOPORTE MUELLE EMBRAGUE : CLUTCH SPRING SUPPORT PLATE	MT2802322045	1
7	ALLEN UI S ESPECIAL PHINSA 4X10 : UI S ALLEN PRESS. PLATE BOLT	T0324010	10
8	BOLET EMBRAGUE TRIAL 2002 : BEARING PLATE	MT2802322014	1
9	COJINETE PRENSA EM AXK 1/ X30X2 : BEARING. CLUTCH END PLATE	MT2802322043	1
10	PISTON BOHIDIN EMBRAGUE TRIAL SXXI : CLUTCH PUMP PISTON	MT2802322042	1
11	TORICA SBR : SBR O-RING	MT2802322043	1
12	TORICA FKM : FKM O-RING	MT2802322047	1
13	MUELLE PISTON EMBRAGUE TRIAL SXXI : CLUTCH PISTON SPRING	MT2802322018	1
14	CASQUILLO G95 CORONA EMBRAGUE : CLUTCH BUSHING	MT2802322080	1
15	CORONA EMBRAGUE TRIAL SXXI : METAL GEAR ASSY	MT2802322003	1
16	CUBO EMBRAGUE SXXI : CLUTCH HUB	MT2802322005	1
17	CASQUILLO SUJECION EMBRAGUE : CLUTCH HUB BUSHING	MT2802322080	1
18	ALLEN UFK 5X20 SUJECION CUBO TRIAL 280 : CLUTCH HUB BOLT	MT2802322081	1
19	ARANDELA 30.2X38X0.5 EMBRAGUE : CLUTCH WASHER	T4003038	1
20	PINON TRANSMISION PRIMARIA : PRIMARY TRANSMISION GEAR	MT2802122004	1
21	CTO DISCOS EMBRAGUE TRIAL : CLUTCH DISC SET COMPLETE	MT2802322055	1
22	CIRCLIP E25 CIGUENAL : CRANKSHAFT E25 CIRCLIP	MT280212023	1

# Cilindro / Cylinder

250 cc. / 280 cc.

125 cc. / 200 cc.



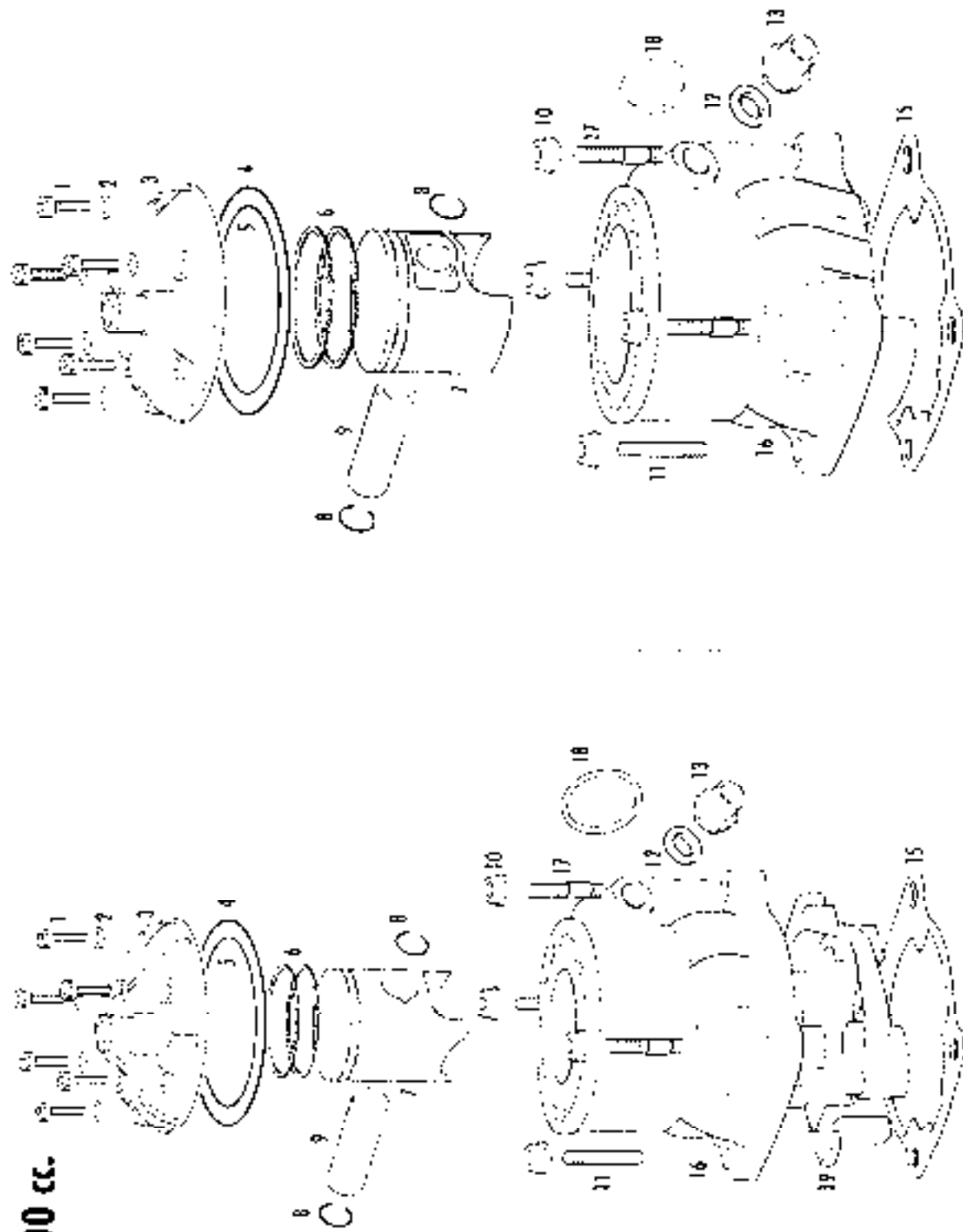
**NEW DESCRIPTION**

	125	200	Carb.
1	70306023		6
2	ARANDELA COBRE 6X10X1.5 : 6X10X1.5 WASHER 14006008		6
3	CULATA TRIAL SXXI : CYL. HEAD MT120116000	MT200216000	1
4	TORICA CULATA EXTERIOR : O-RING CYL. EXTERIOR ME120116060		1
5	TORICA CULATA INTERIOR : O-RING CYL. INTERIOR ME120116065		1
6	AROS PISTON : PISTON RINGS MT120216040	MT2016040	2
7	PISTON TRIAL SXXI : PISTON TRIAL MT120216020	MT200216023	1
7B	PISTON LETRA B MT120216021	MT200216021	
7C	PISTON LETRA C MT120216022	MT200216022	
7D	PISTON LETRA D MT120216023	MT200216023	
8	CLIP PISTON : CLIP PISTON MT120216126		2
9	BULON PISTON : PIN PISTON MT120216125	MT200210135	3
10	TUERCA CILINDRO : CYLINDER NUT MO1613301		4
11	ESPARRAGO CILINDRO : STUD BOLT CYLINDER MT280216023		2
12	ARANDELA PLANA FIBRA : FIBER WASHER MO1612026		1
13	RACORD CILINDRO : CYLINDER WATER HOSE NECK MO1612021		1
15	JUNTA CILINDRO : GASKET CYLINDER BASE MT280244000		1
16	CILINDRO TRIAL : CYLINDER MT120216022	MT200216022	1
17	ESPARRAGO CON CENTRAJE : STUD WITH CENTER M1280216056		2
18	JUNTA ESCAPE : EXHAUST GASKET MT280244012		1
19	ADAPTADOR CILINDRO : CYLINDER ADAPTER MT120216087		1

# Cilindro / Cylinder

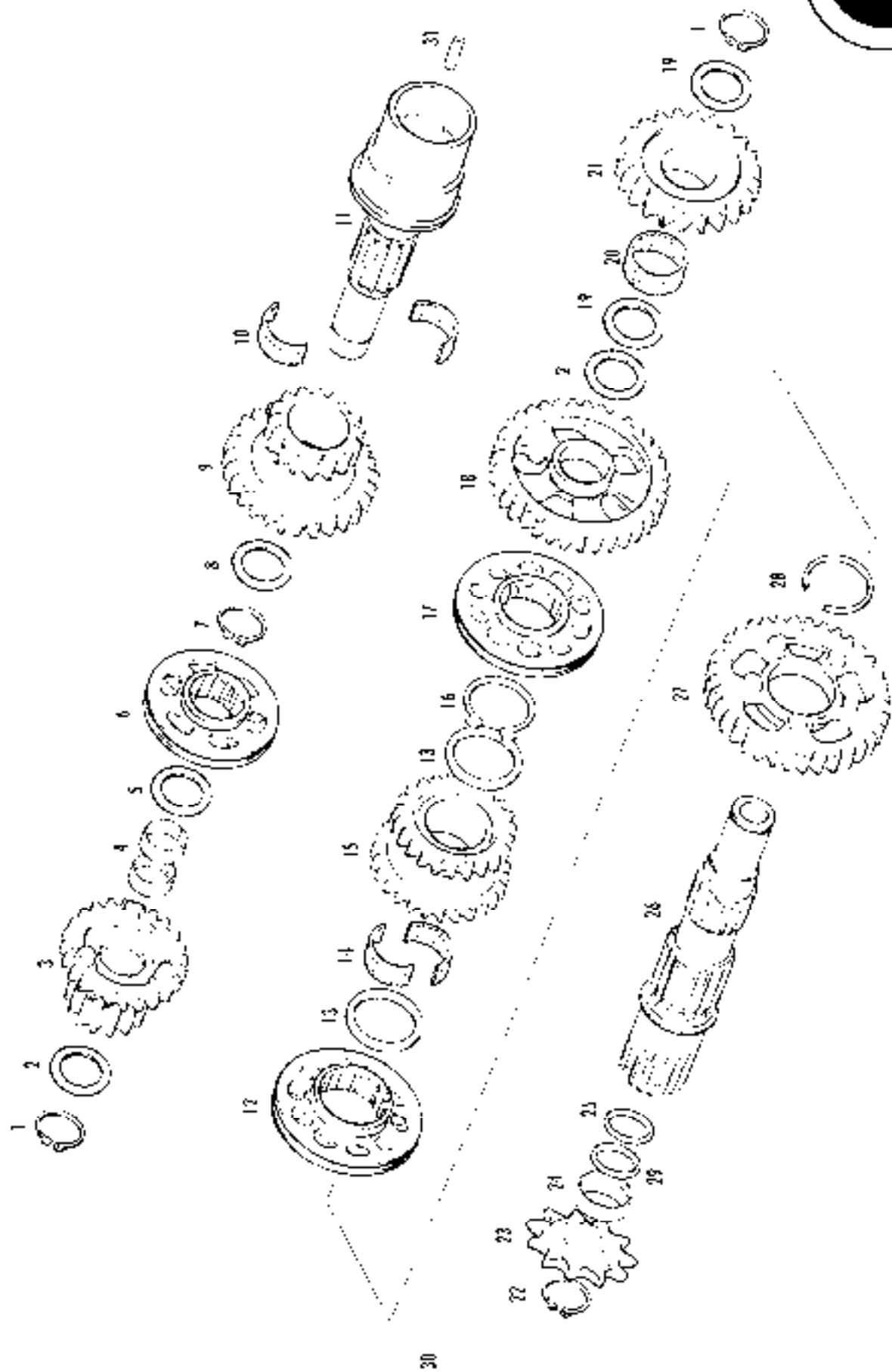
250 cc. / 280 cc.

125 cc. / 200 cc.



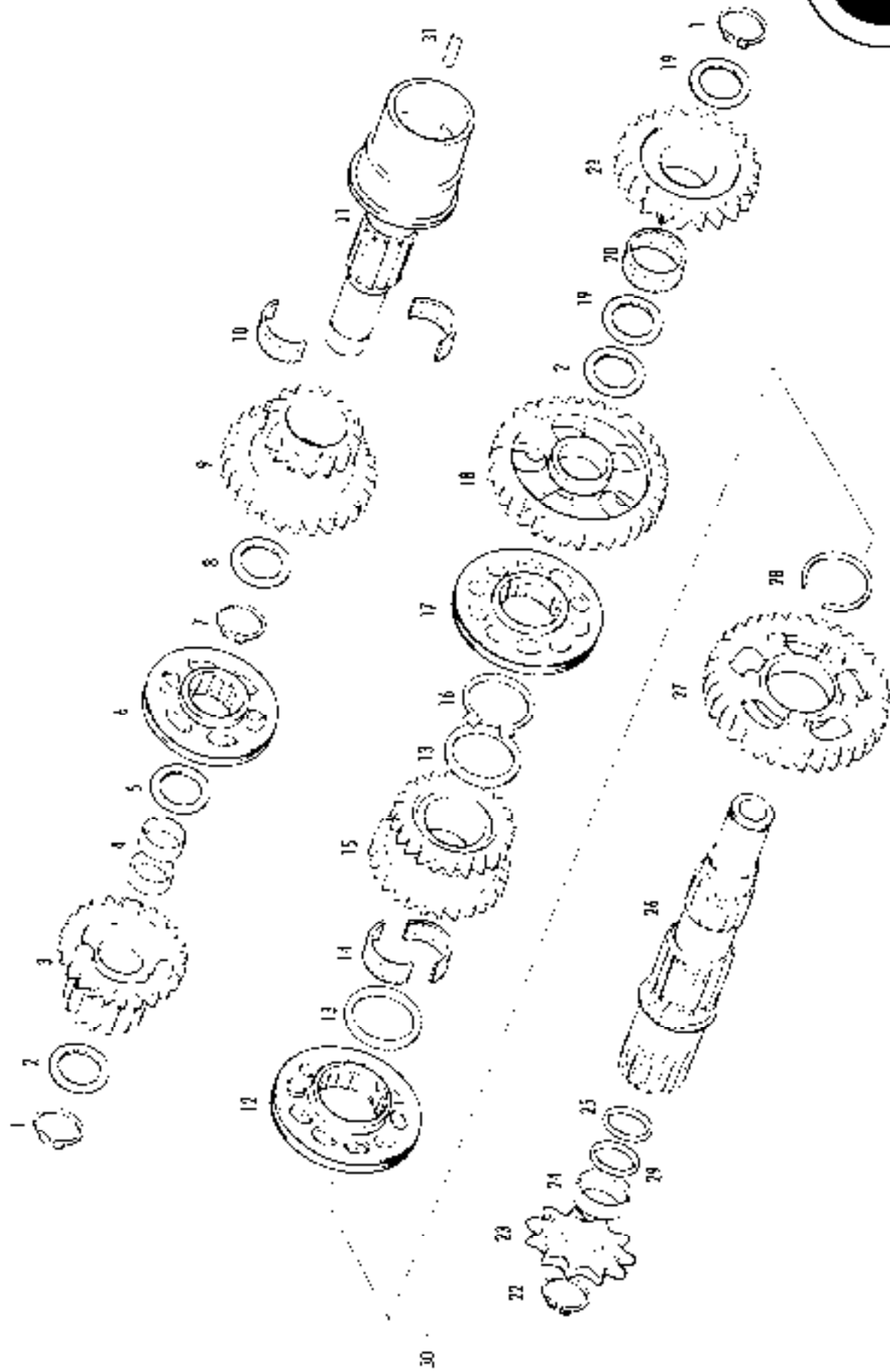
№	DESCRIPTION	250	280	Cant.
1	ALLEN 6x25 / 6x25 ALLEN BOLT	T0306025		6
2	ARANDELA PLANA 6X12X1.5 / 6X12X1.5 WASHER	T4006008		6
3	CULATA TRIAL SXX1 / CYL HEAD	MT25016000	MT280216000	1
4	TOBICA CULATA EXTERIOR / O-RING CYL EXTERIOR	MT27816060		1
5	TOBICA CULATA INTERIOR / O-RING CYL INTERIOR	MO1619215		1
6	AKOS PISTON / PISTON RING	MT25916241	MT280016241	2
7	PISTON TRIAL SXX1 / PISTON TRIAL	MT250216020	MT280216020	1
7B	PISTON LETRA B	MT250216021	MT280216021	
7C	PISTON LETRA C	MI250216022	MT280216022	
7D	PISTON LETRA D	MT250216023	MT280216023	
8	CLIP PISTON / CLIP PISTON	MT280216126		2
9	BULON PISTON / PIN PISTON	MT280216126	MT280216126	1
10	TUERCA CILINDRO / CYLINDER NUT	MO1613001		4
11	ESPARRAGO CILINDRO / STUD BOLT CYLINDER	MT280216023		2
12	ARANDELA PLANA FIBRA / FIBER WASHER	MO1612026		1
13	RACORD CILINDRO / CYLINDER WATER HOSE NECK	MO1612021		1
15	JUNTA CILINDRO / GASKET CYLINDER BASE	MT280216000		1
16	CILINDRO TRIAL / CYLINDER	MT250216022	MT280216022	1
17	ESPARRAGO CONCENTRAL / EXHAUST GASKET	MT280216056		2
18	JUNTA ESCAPE / EXHAUST GASKET	MT280244012		1

# Engranajes cambio / Gear set



N°	DESCRIPCION	125 / 200 / 250 / 280	Cant.
1	CIRCLIP E15 DIN471 : E15 CIRCLIP	MT280236163	2
2	ARANDELA 15,2X23X0,5 : 15,2X23X0,5 WASHER	14001523	4
3	PINON 25 : 25 GEAR	MT280236071	1
4	DOLLA : BUSHING	MT280236164	2
5	ARANDELA 17X23X0,5 : 17X23X0,5 WASHER	T4001723	1
6	DESPLAZABLE PRIMARIO : PRIMARY SELECTOR DISC	MT280236073	1
7	CIRCLIP E20 DIN 471 HEBAJADO : F20 CIRCLIP	MT280236165	1
8	ARANDELA 20X25X0,5 : 20X25X0,5 WASHER	T4002025	1
9	PINON 36 : 36 GEAR	MT280236072	1
10	JAULA ACUJAS : NEEDLE BEARING	MT280236162	2
11	EJE PRIMARIO / PRIMARY SHAFT	MT280236070	1
12	DESPLAZABLE 2 SECUNDARIO : SECONDARY SELECTOR DISC	MT280236030	1
13	ARANDELA 22X27X0,5 : 22X27X0,5 WASHER	T4002227	2
14	JAULA ACUJAS : NEEDLE BEARING	MT280236161	2
15	PINON 58 : 58 GEAR	MT280236078	1
16	CIRCLIP E22 DIN471 : E22 CIRCLIP	MT280236166	1
17	DESPLAZABLE 3 SECUNDARIO : SECONDARY SELECTOR DISC	MT280236079	1
18	PINON 3 SECUNDARIO : SECONDARY 3 GEAR	MT280236076	1
19	ARANDELA : WASHER	M02625001	2
20	JAULA ACUJAS : NEEDLE BEARING	MT280226015	1
21	PINON INTERMEDIO ARAVANCQUE : GEAR JOLE KICKSTART	MT280226001	1
22	CIRCLIP E25 : E25 CIRCLIP	MT280212023	1
23	PINON CADENA SALIDA : SPROCKET COUNTERSHAFT	MT280236525	1
24	DOLLA RETEN SALIDA CAMBIO : SHIFT SEAL BUSHING	MT280236046	1
25	TORCA 25X213R : 25R 25X2 O RING	ME25637025	1
26	EJE SECUNDARIO : SECONDARY SHAFT	MT280236075	1
27	PINON 2 SECUNDARIO : SECONDARY 2 GEAR	MT280236077	1
28	CIRCLIP SW25 : SW25 CIRCLIP	MT280236167	1
29	TORCA 25X1,5 NBR : 25X1,5 O RING	MT280212025	1

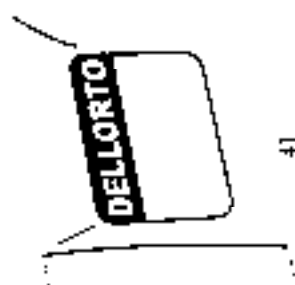
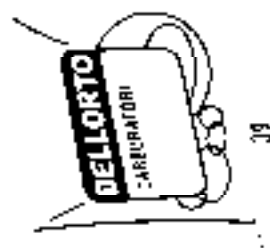
# Engranajes cambio / Gear set



N°	DESCRIPCION	125 / 200 / 250 / 280	CANT.
30	CTO, CAMBIO THIAL : TRANSMISSION COMPLETE	M1280236103	1
31	SUJECION CUBO A PRIMARIO THIAL : SUPPORT BUCKET	MT280236103	1

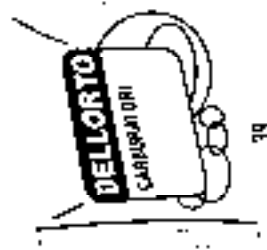
**Motor 11**

# Carburador / Carburetor

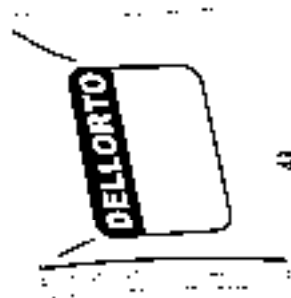


N°	DESCRIPCION	J25 / 200	250 / 280	( Cant.
1	CAPUCHON TENSOR CABLE GAS / APU TENSION THROTTLE CABLE		M09001055	1
2	CTO. TENSOR CABLE : CABLE TENSION SET SCREW			1
3	TENSOR CABLE GAS : CABLE TENSION TUBE		M09001032	1
4	FORNITO TAPA CARBURADOR : SCREW COVER CARBURETOR		M09001025	2
5	TAPA CARBURADOR : COVER CARBURETOR		M09001156	1
6	AGUJA D363 PUNTO / NEEDLE D363		M090003136	1
7	MUELLE COMPUERTA : SPRING SLIDE		M09001015	1
8	PLANCHASUJECION CABLE GAS : CABLE RETAINER PLATE		M09001010	1
9	COMPUERTA : VALVE SLIDE	M09002050	M09002060	1
10	TORICA TAPA CARBURADOR OJING COVER CARBURETOR		M09001050	1
11	TORNILLO SUJ. STARTER: CHOKE SCREW		M09001110	1
12	MANDO STARTER: CHOKE LEVER ASSY.		M09001106	1
13	TORICAS STARTER : CHOKE		M09001065	1
15	TORNILLO REG. ENTRADA AIRE : RFG. INTAKE OF SCREW		M09001115	1
16	MUELLE TORNILLO REG. AIRE : SPRING SCREW AIR		M09001120	1
17	ARANDELA TORN. REG. AIRE : WASHER SCREW BOLT REG. AIR		M09001125	1
18	TORICATORN. REG. AIRE : O-RING SCREW BOLT REG. AIR		M09001075	1
19	TORNILLO RFG. COMPUERTA : SCREW BOLT REG. SLIDE		M09001035	1
20	MUELLE TORNILLO REG. COMPUERTA : SPRING SCREW SLIDE		M09001040	1
21	ARANDELA TORNILLO REG. COMP. : WASHER SCREW BOLT SLIDE		M09001045	1
22	TONICA TORN. RFG. COMP. : O-RING SCREW REG. SLIDE VALVE		M09001080	1
23	JUNTA PIPETA GASOLINA : FULL FILL DISC		M09001025	1
24	PIPETA ENTRADA GASOLINA : FULL ENTRY TUBE		M09001135	1
25	JUNTA TORNILLO PIPETA : GASKET SCREW BOLT		M09001100	1
26	TORNILLO PIPETA : BOLT		M09001140	1
27	CHICLUSOR : NEEDLE JET	M090005268	M090005271	1
28	CHICLUSOR : JET SLOW/30	M090004036	M090004035	1
29	VALVULA FLOJADOR : FL OAT VALVE		M09001200	1
30	CHICLE STARTER 60 : JLU CHOKE 60		M090007060	1

# Carburador / Carburetor



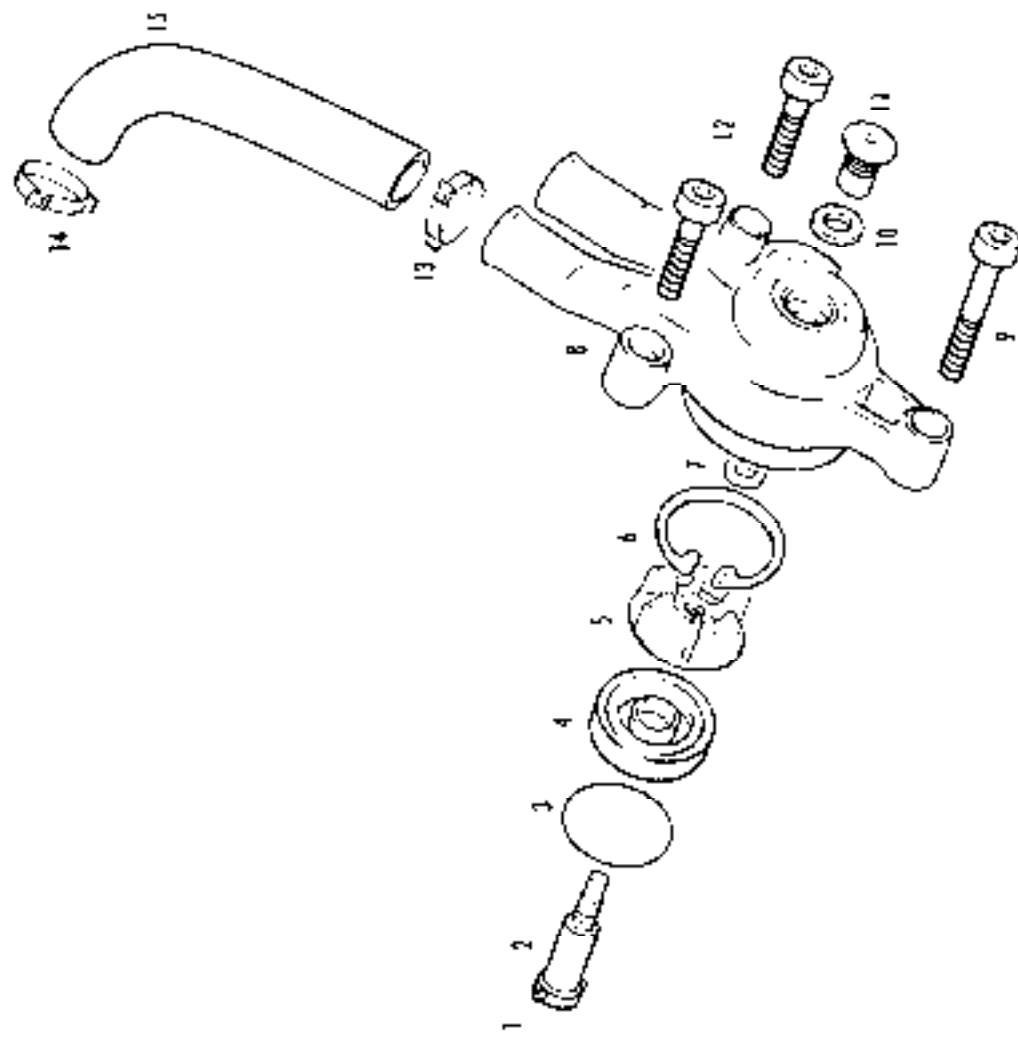
38



41

N° DESCRIPCION	125 / 200	250 / 250	Cant.
31 TORICA CHICLE STARTER : O-RINGS JET CHOKE		M093001070	1
32 FUEL FLOTADOR : FLOAT SHAFT		M093001145	1
33 FLOTADOR 2X2 - FLOAT 2X2		M093000036	2
34 TORICA CUBETA GASOLINA : O-RINGS FUEL BOWL		M093001085	1
35 CUBETA GASOLINA : FUEL BOWL		M093001450	1
36 CHICLE PRINCIPAL : MAIN JET	M090006105	M090006118	1
37 TORICA TAPON CUBETA : O-RINGS		M09001090	1
38 TAPON CUBETA GASOLINA : FUEL BOWL HOLES		M09001155	1
39 KIT JUNTAS CARBURADOR : GASKET CARBURETOR KIT		M09600161	1
40 CARBURADOR 26 36 : 26/36 CARBURETOR COMPLETE	MT120290330	MT280290330	1
41 KIT CARBURACION : CARBURETOR KIT	MT120290100	MT280290100	1

**Bomba agua / Water pump**



N° DESCRIPCION	125 / 200 / 250 / 280	CANT.
1 PASADORA 3X?? EJE BOMBA / PUMP AXIS PIN	MT280219009	1
2 EJE BOMBA AGUA / AXLE TURBINE	MT280218006	1
3 TORICA 37X1.5 TAPA BOMBA AGUA / O RING WATER PUMP COVER	MT280218008	1
4 RETEN 10X35X7 DUO TKM / WATER PUMP SEAL	MT280210020	1
5 TURBINA BOMBA AGUA / WATER PUMP TURBINE	MT280218007	1
6 CIRCLIP 135 BOMBA AGUA / WATER PUMP CIRCLIP	MT280210019	1
7 ARANDELA TURBINA TRIAL / TURBINE WASHER	MT280218011	1
8 TAPA BOMBA AGUA / WATER PUMP COVER	MT280210008	1
9 ALLEN 40 / 40 ALLEN BOLT	T0305040N	1
10 ARANDELA NYLON / NYLON WASHER	MT280218012	1
11 CASQUILLO BOMBA AGUA TRIAL 2002 / WATER PUMP RUSHING	MT280218002	1
12 M11 EN 35 / 35 ALLEN BOLT	T0305035N	2
13 ABRAZADERA 20 / 20 CLAMP	L200035	1
14 ABRAZADERA COBRA 19 / 19 CLAMP	L200043	1
15 TUBO BOMBA - CILINDRO / PUMP TO CYLINDER HOSE	B1280232017	1



**GAS GAS MOTOS, S.A.**

CIF ES/A-170/0921

C/UNICEF nº 17 · Poligon Industrial Terremirana 17190 Salt (Girona) SPAIN · Tel: +34 902 47 62 54 Fax: +34 902 47 61 60  
E-mail: [officegg@gasgasmotos.es](mailto:officegg@gasgasmotos.es) / [parts@gasgasmotos.es](mailto:parts@gasgasmotos.es) Web: [www.gasgasmotos.es](http://www.gasgasmotos.es)