

Number / Numéro

Epilées / Epilés

Pilées / Pilados

Chassis / Frame

Epis de shis / Air Filter

Beclidérite / Sterogam

1

2

4

5

DESPIECE

CHASSIS

Arca escape / Anticor

Arca escape / Anticor

Arca escape / Anticor



7

Arca escape / Anticor

Arca escape / Anticor

Arca escape / Anticor



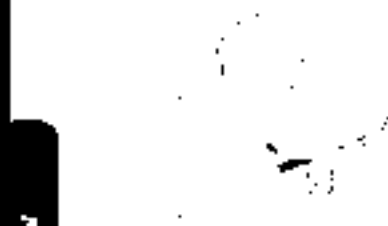
8



9



10



11

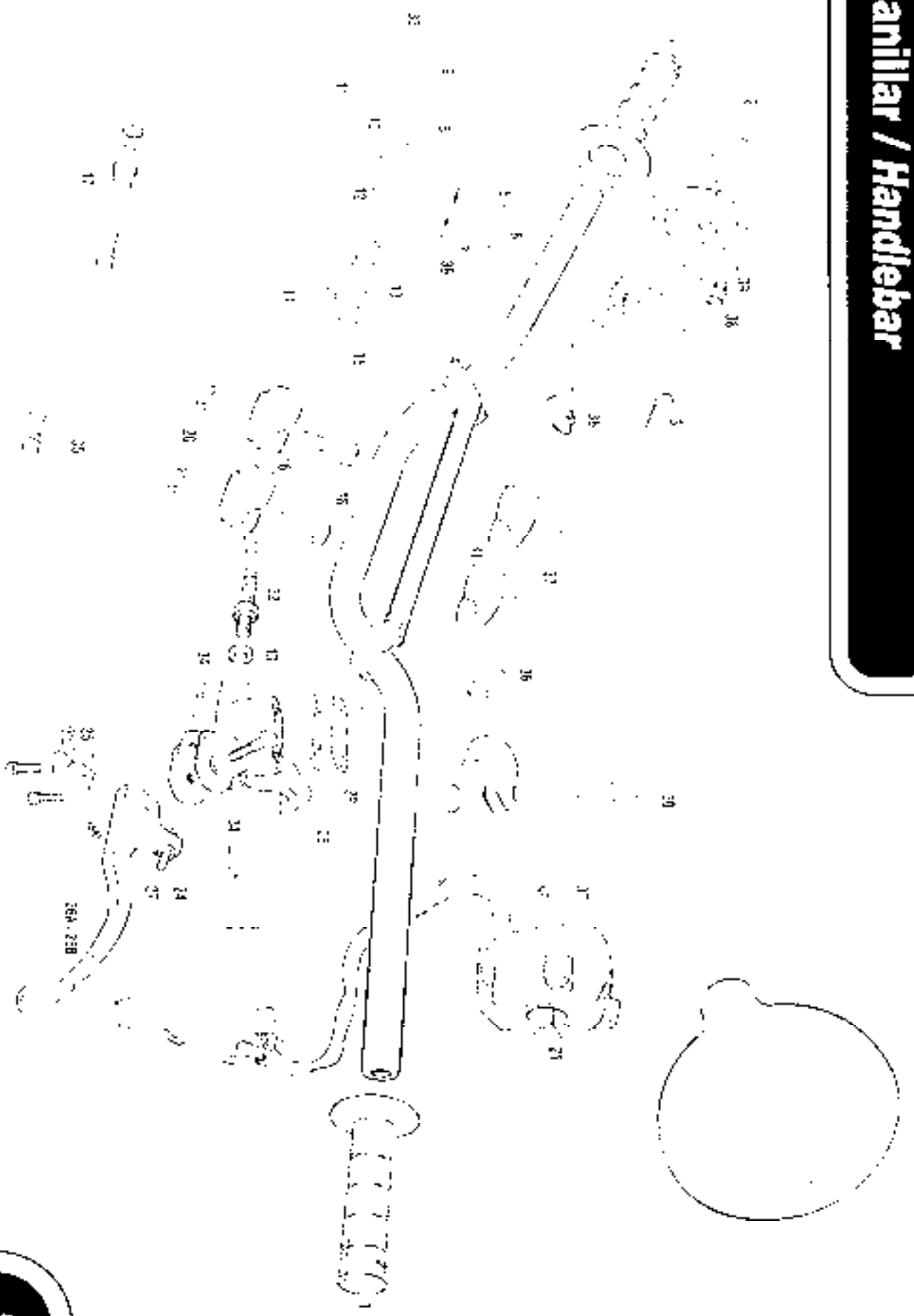


12

PART LIST

FRAME

Manillar / Handlebar



N°	DESCRIPCION	PRE 400 cc.	Cant.
1	JUEGO DE EMPUNADURAS HANDLEBAR GRIP PAIR.	BE250236002	1
2	PURGE CL GAS TWIST GRIP	BT540024007	1
3	CABLE DE GAS / THROTTLE CARB F	BFS400124008	1
4	MANILLAR COMPLETE STEERING HANDLEBAR SET	DL250224001	1
5	TAPA BOMBA FRENO BRAKE PUMP COVER	BC25022210	1
6	TORNILLO TAPA BOMBA BRAKE PUMP SCREW	BC25022217	2
7	GOMA ANTESPUMANTE F.MO.FOAM RUBBER	BC25022216	1
8	TORNILLO ESPECIAL SPECIAL SCREW	BC25022215	1
9	MANETA FRENO DELANTERO FRONT HORNK LEVER	RC250222045	1
10	TENSOR MANILLA BOMBA PUMP LEVER TENSOR	BC25022218	1
11	GUARDAPOLVO DUST COVER	RC25022213	1
12	CULPRO BOMBA BODY PUMP	BC25022214	1
13	ARANDELA LAT GUILLO 10X14X1 MOSE WASHER 10X14X1	RE25022007	2
14	LATIGUILLO FRENO DELANTERO FRONT BRAKE HOSE	BE250022002	1
15	INTERRUPTOR STOP BOMBA PUMP STOP SWITCH	WL250031003	1
16	BRIDA SUJ MANILLAR INE HANDLEBAR CLAMP COVER	BE25014014	2
17	KIT PISTON BOMBA FRENO BRAKE PUMP PISTON KIT	BC25022219	1
18	HEXAGONAL 10X35 HEX BOLT 10X35	T0110035	2
20	TUERCA AJUSTE OCANTE BAJA UN CON ARANDELA SELF LOCKING NUT M12	T2210000	2
21	COMUTADOR LUZ LIGHT SWITCH	BFS100134001	1
22	LATIGUILLO EMBRAGUE CLUTCH HOSE	BL25022003	1
24	TORNILLO REGULACION MANETA ADJUSTING LEVER SCREW	BT27022046	1
25	SOPORTE BOMBA EMBRAGUE CLUTCH PUMP CLAMP	SE25022211	1
26a	MANETA EMBRAGUE CORTA SHORT CLUTCH LEVER	BT27022040	1
26b	MANILLA EMBRAGUE LARGA (SERIE) LONG CLUTCH LEVER (STANDARD)	E200701	1
27	TUERCA M6 BAJA M6 / OX NUT	T2006001	1
28	BOMBA EMBRAGUE HIDRAULICO HYDRAULIC CLUTCH PUMP	BE250022004	1
29	KIT TAPA BOMBA FRENO Y EMBRAGUE CLUTCH AND BRAKE PUMP COVER KIT	BL27722219	1
30	ESPLUJO RETROVISOR REAR VIEW MIRROR	L3001001	1
31	BRIDA SUJ MANILLAR SUPERIOR HANDLEBAR CLAMP UPPER	BE25014012	2
32	TORNILLO SUJ BRIDA MANILLA AR 8X30 CLAMP SCREW 8X30	T0008030	2
33	CTO BOMBA FLENO DELANTERO FRONT BRAKE PUMP SET	BC250222008	1

Chasis 1

Manillar / Handlebar

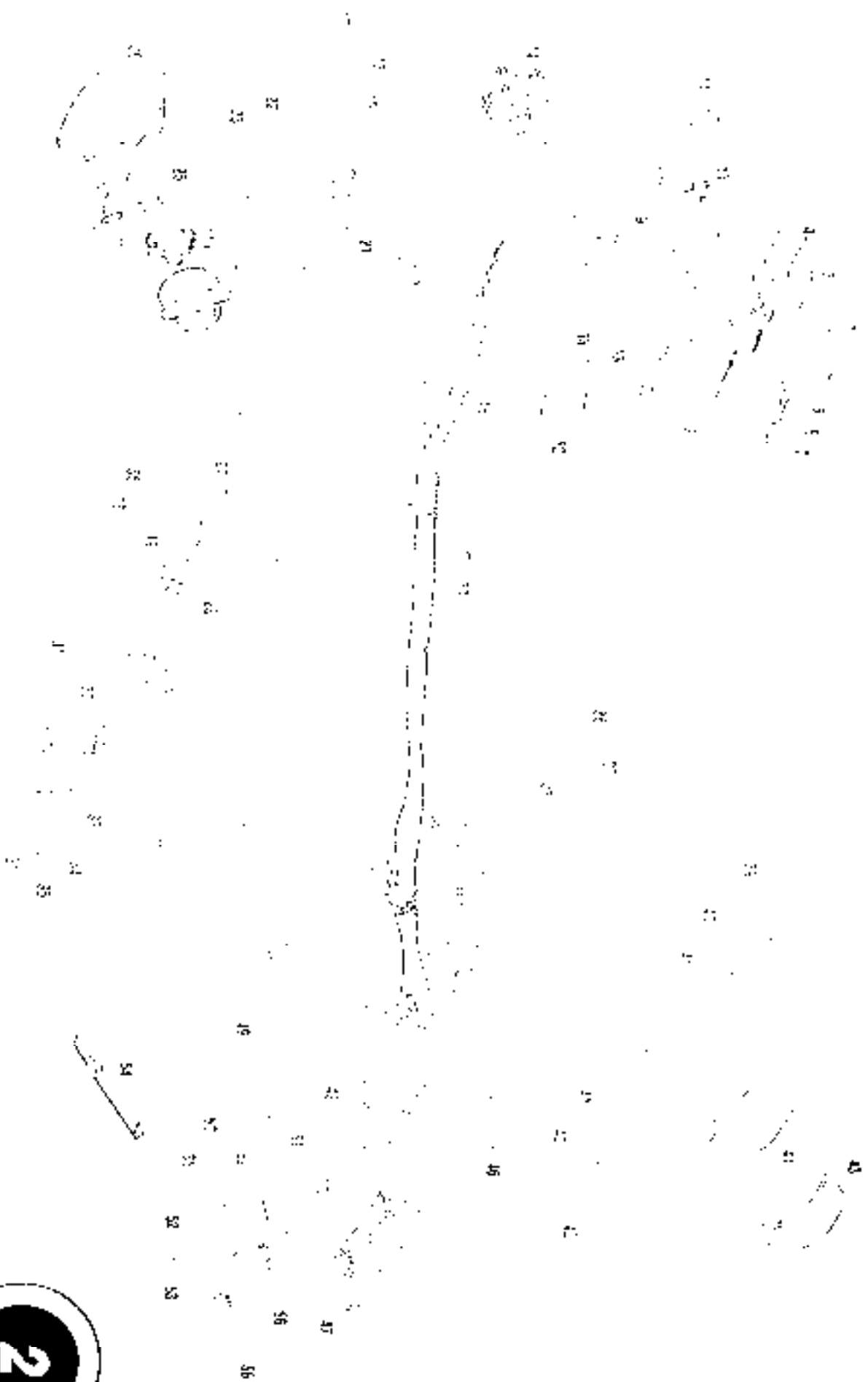


N°	DESCRIPCION	PSI: 400 c.c.	Cant.
34	KIT REPARACION . REPAIRATION KIT	RC46000	1
35	KIT PISTON BOMBA FRENO "B" . B BRAKE PUMP PISTON KIT	RC2592220	1
36	BRIDA GRANDE . CLAMP	BC2592211	2
37	BRIDA PEQUEÑA . CLAMP	BE25631010	1
38	TENSOR CAULL GAS THROTTLE CABLE TENSOR	BF S400124012	1
39	TUFRCA TENSOR . TENSOR NUT	BFS400124013	1

Chasis 1

N°	DESCRIPCION	CANT.
1	MULTIFUNCION ENDURO ENDURO MULTIFUNCTION	1
2	SOPORTE CIA. KM. SPEED COUNTER HOLDER	1
3	AD. HERR. CUENTAKM. HERR. SPEED COUNTER STICKER	1
4	LAMPON ILS TIGU NEGRO LAMP LAMP	2
5	TESTIGO LUZ INTERMITENTE INDICATOR LIGHT	1
6	ILSTIGO LUZ POSICION SHORT LIGHT INDICATOR	1
7	TESTIGO LUZ CARGA LONG LIGHT INDICATOR	1
8	CLIP ILS TIGU LIGHT CLIP	2
9	BOMBILLA 12V12W BOMB. 12V12W	4
10	ANT. RROBO CAN DIRECT	1
11	LLAVES KEYS	2
12	CAJAS ILS HERR. CAPS INTERMITENTE BOX	1
13	SOPORTE CAJA INTERMITENCIAS INTERMITENT BOX SUPPORT	1
14	REGULADOR REGULATOR	1
15	GOMA SOPORTE CAJA INTERMITENCIAS	1
16	INSTALACION ELECTRICA FSE ELECTRICAL INSTALLATION	1
17	INTERMITENTE DERECHO DE FRENTE INDICATOR INDICATION	1
18	TAPA INTERMITENTE INDICATOR COVER	4
19	BOMBILLA LAMP	4
21	SOPORTE ILS DEL DERECHO RIGHT FRONT INDICATOR HOLDER	1
22	TORNILLO 6X20 6X20 SCREW	1
23	CLAXON HORN	1
25	BOMBILLA 12V16-45W 12V16 - 45W BULB	1
26	OPTICA ORIGINAL STANDARD OPTIC	1
27	SOPORTE ILS DEL IZQUIERDO LEFT FRONT INDICATOR HOLDER	1
28	TORNILLO CHAFIA SPECIAL SCREW	2
30	BRIQUA UNLX 4.6X36 UNLX LAMP 4.6X36	2
31	PAPA BUJA SPARK PLUG CAP	1
32	BOBINA IGNITION COIL	1
33	SOPORTE BOBINA IGNITION COIL SUPPORT	1
34	TUERCA ALTOBLOCANTE M3 M3 SELF-LOCKING NUT	1
35	ULS 6X16 6X16 UL'S BOLT	4

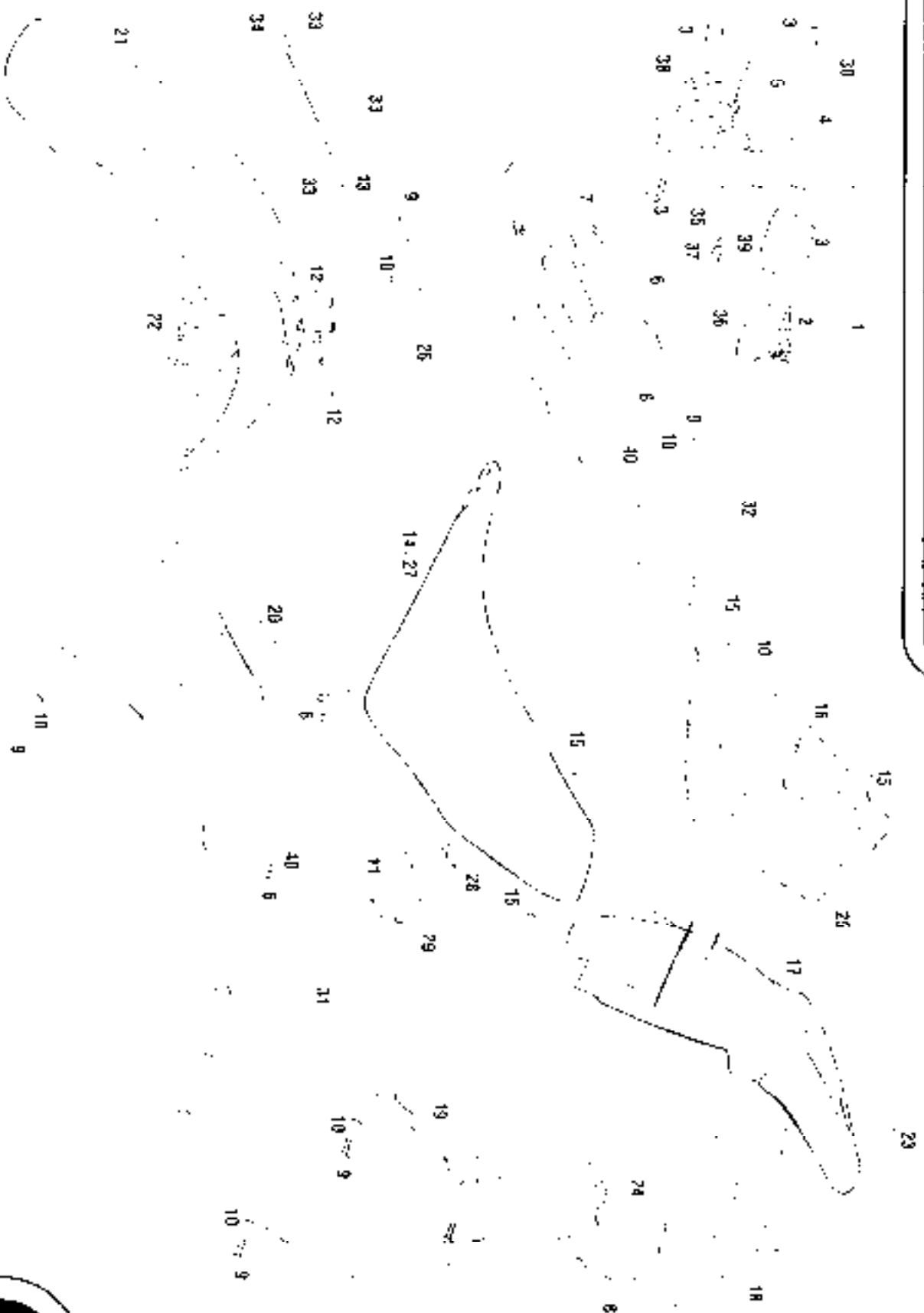
Chasis 2



N	DESCRIPCION	PNL 400 c.c.	Cant.
36	HELVIO HALL. HALL SENSOR	BT250034059	1
37	CENTRALITA:	SFS400180001	1
38	SOPORTE CENTRALITA	BFS400134082	1
39	INTERMITENTE DRECHO TRASERO. RIGHT REAR INDICATOR	BE250134021	1
40	ULS 6X6 NLGHC. 6X16 BLACK ULS	T05060104	2
41	TUERCA CON ARANDELA M6. M6 NUT WITH WASHER	12206002	2
42	INTEHMIFENL IZQUIERDO TRASERO. LEFT REAR INDICATOR	BE250134022	1
43	CRISTAL FARO TRASERO: REAR LIGHT CAP	BP250134015	1
44	BOMBILLA 2V5-21W. 12V5-21W BULB	12300116	1
46	TAPA CAJA FUSIONES	M15400180114	1
47	BATERIA F7-12B EC100-4T. F7-12B EC100-4T BATTERY	SFS4001340602	1
48	FUSIBLE 30A	M15400180113	1
49	RELE ARRANQUE	BFS400134075	1
50	SOPORTE RELF ARRANQUE	BI 5400134076	1
51	TORNILLO ROSCA-CHAPA	T06135011	1
52	TORNILLO ULS 6X12. 6X12 ULS SCREW	T0506012	1
53	CAJA BATERIA EC100-4T. BATTERY BOX	BFS400134093	1
54	GOMA SUJECCION CDI: CDI ELASTIC BAND	BE250034100	1
55	INTEHMIFENTE ZQUIERDO DELANTERO. LEFT FRONT INDICATOR	BE250134019	1
56	CASQUILLO		2

N°	DESCRIPCIÓN	PSE 400 C&C	Cant.
1	CITO FARO DELANTERO ROJO : RED FRONT HEADLIGHT SET	BE250220120	1
2	OPTICA NORMAL 307 10 STANDARD 1 AMP 307 10	DL25520024	1
3	GOMA SUJILIAJERO D.38 PP - HEADLAMP RUBBER HOLDER	BE25636015	4
4	GUIA CABLE FARO ENFURCO ENFURO HEADLAMP CABLE GUIDE	BE25020053	1
5	TAPE TA GUIA CABLE ROJO : RED HOSE GUIDE CAP	6X250120023	1
6	TORNILLO ROSCA CHAPA 3.5x13 SORFV 3.5x13	10603513	4
7	PLACA LAT RAD. DERECHA ROJA RED RIGHT RADIATOR COVER	BF250220012	1
8	PORTAMATRICULA ACOMPITION RACING LICENSE PLATE HOLDER	BE250121003	1
9	TORN. ESP 6x6 ZINCADO ZMC TREATED SPECIAL SCREW 6x16	T0275016	2
10	CASQUILLO TAPA RAD ALUM ALUMINUM SUIL COUPLER BUSHING	BE250032060	2
11	REMACHE SILLIN 14x4 8x14 SEAT RIVET 14x4 8x14	BE25610017	4
12	CASQUILLO GUARDAH CON VCI ONA PHONY FLNUEH BUSHING	BE250011119	4
13	TIRANTE GUARDABARROS DELANTERO	6C250220039	1
14	SILLIN EC210-201 EC210-201 SEAT	BE250210015	1
15	TORNILLO ESPECIAL 6x20 , SPECIAL SCREW 6x20	10305020	2
16	PORTANUMFROS LAT DERECHO ROJO RED RIGHT REAR COVER	BE250120004	1
17	GUARDABARROS TRAS. ROJO RED REAR FENDER	3F5400120007	1
18	PORTALATRICUIAS TRAS EC201 REAR LICENSE PLATE HOLDER	SE250120003	1
19	PORTANUMEROS LAT IZD. ROJO RED REAR SIDE COVER	3L250120005	1
20	PLACA LAT RAD. IZQUIERDA HOJA HLD LFT / RADIATOR COVER	BF250220113	1
21	CJAFDABARROS DEL. ROJO RED FRONT FENDER	BE250020006	1
22	TORNILLO ESPECIAL 6X20 : SPECIAL SCREW 6X20	T0270020	4
23	TORNILLO PHILIPS M3X20 , PHILIPS SCREW M3X20	TC700015	2
24	MECANICÓN AHANDELANO MENSUTUYU WASHER	T2200002	2
25	TOPE COTA PLACA LAT EC230 SIDE COVER RUBBER LND	BE250020104	2
26	ARANDELA NYLON 6.5X16X1 NYLON WASHER 6.5X16X1	T06065017	2
27	FUNDA SILLIN ROJA : RED SEAT COVER	BE250210355	1
28	SOPORTE SILLIN DERECH. ALUM. ALUMINUM RIGHT SEAT HOLDER	UL250010019	1
29	SOPORTE SILLIN IZD. ALUM. ALUMINUM LEFT SEAT HOLDER	BE250010020	1
30	FARO DELANTERO ROJO : RED FRONT HEADLIGHT	UX250020020	1
31	SLMITAPA LATERAL IZQUIERDA / LEFT SIDE COVER	BE250125025	1
32	SEMITAPA LATERAL DERECHA / RIGHT SIDE COVER	6.E500120057	1

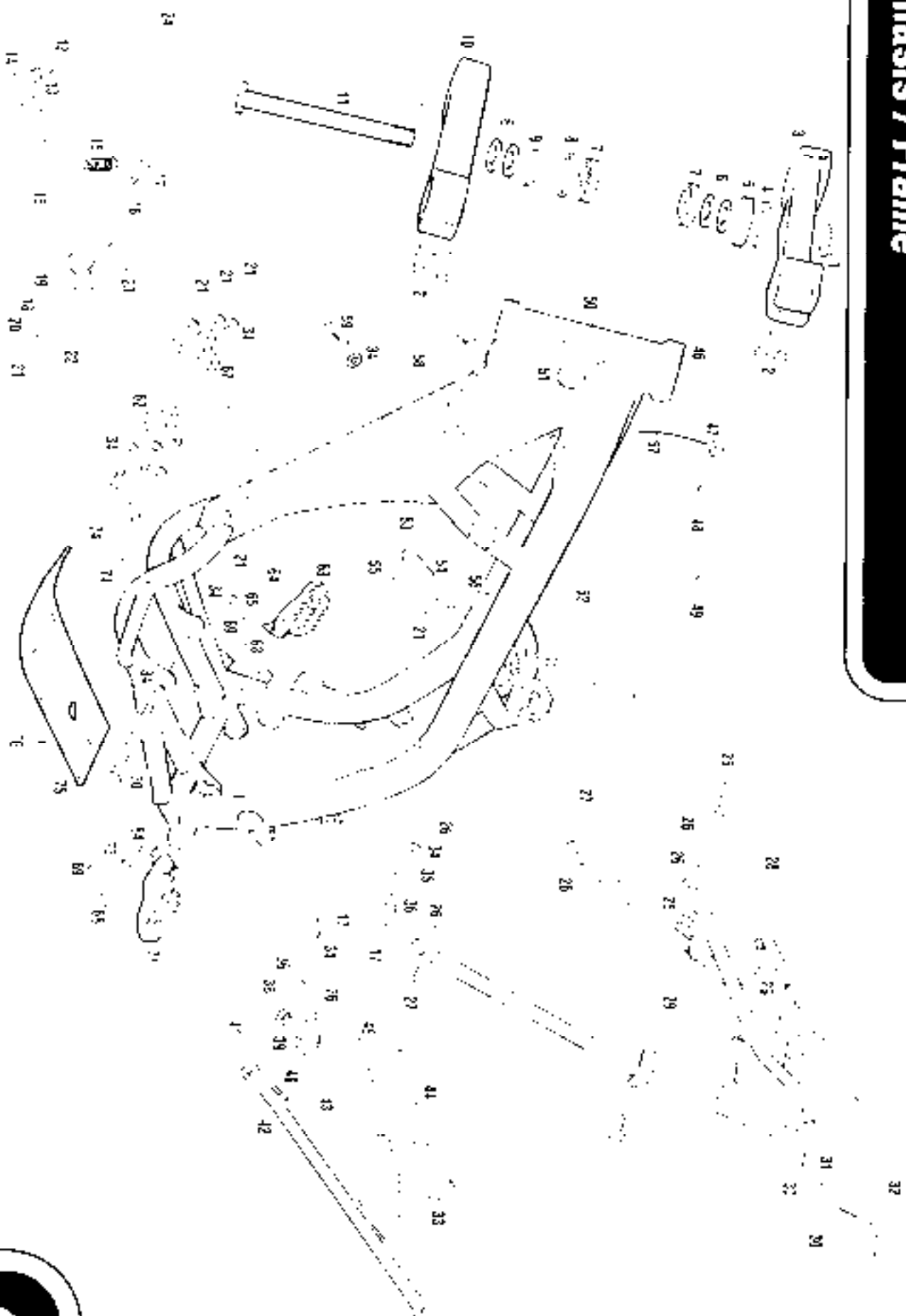
Plásticos / Plastics



N°	DESCRIPCION	FNSI 400 c.c.	Cant.
33	ULS 6X30 ZINCADO ULS 6X30 SCREW	10556020	3
34	TUERCA M6 CON ARANDELA M6 NUT WITH WASHER	7206030	1
35	MJFILE TORNILLO REG. OPTICA. SCREW REG LAMP SPRING	3X250023026	1
36	PORTA OPTICA FAHO GRANADA. GRANADA RASG LAMP	3X250023027	1
37	GRAPA REGULADOR FARO GRANADA LAMP REG NUT	3X250020029	1
38	ALLEN REGULADOR OPTICA LAMP REG ALLEN	T6301035	1
39	TUERCA TORNILLO REG. OPTICA SCREW LAMP REG. WASHER	12004000	2
40	ARANDELA NYLON NYLON WASHER	T06003017	2

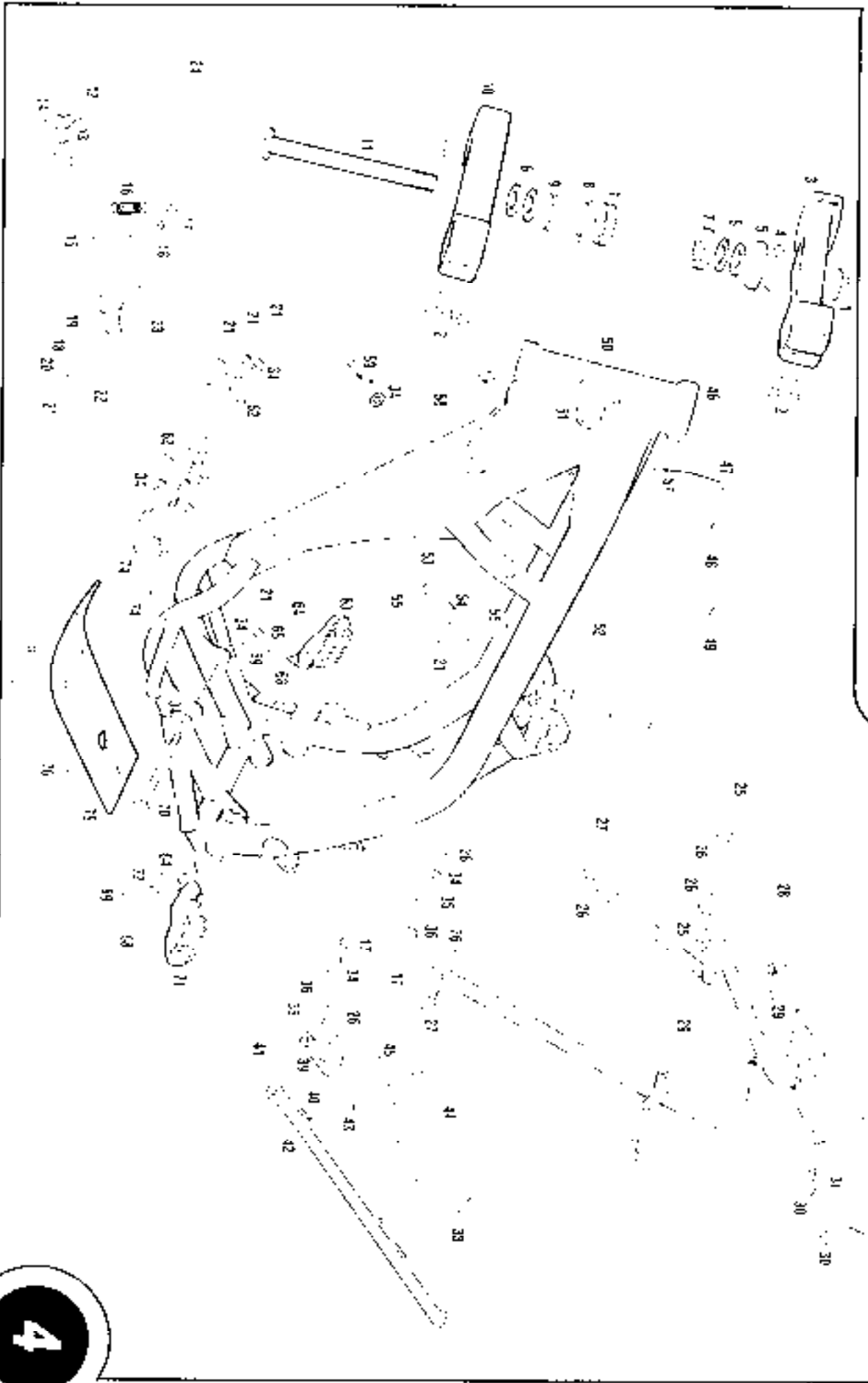
Chasis 3

Chassis / Frame



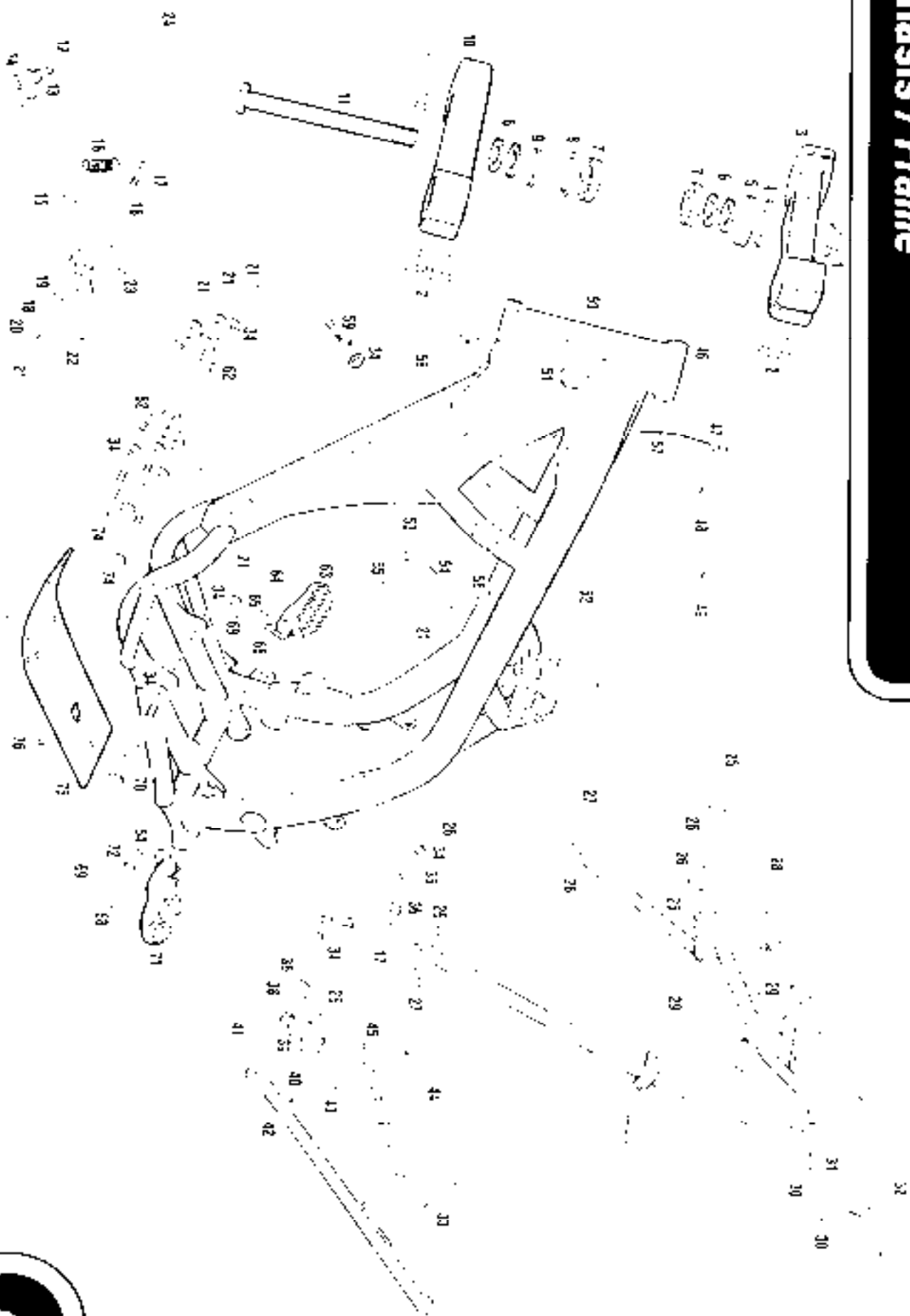
N	DESCRIPCION	EST. MM C.C.	CANT
1	TUERCA DIRIGIDA - STEERING SHAF T	BE25010000	
2	ALIF - BARRA SUPERIOR - ABS ALBET 200	1000000000	6
3	BANDA SUPERIOR SUSP. CROSS - CROSS STEERING SHAF T	BE25010000	
4	TORNILLO DIRECCION - SUPERIOR STEERING SHAF T	ULS0000000	
5	GUARDARRELLAS SUPERIOR - BEARING RUSTIC SUP	BE25010000	
6	ARMADILLA DIRECCION - STEERING SHAF T	BE25010000	
7	COJINETE DIRECCION - STEERING SHAF T	ULS0000000	
8	TORCA BARRA DIRECTOR - ABS STEERING SHAF T	BE25010000	
9	CAZOLETA DIRIGIDA - STEERING SHAF T	BE25010000	
10	BANDA SUPERIOR SUSP. CROSS - CROSS STEERING SHAF T	BE25010000	
11	TUA DIRECCION - STEERING SHAF T	BE25010000	
12	PASADOR PUNTERA DMS 6X25 - DMS 6X25 SHAF T	BE25010000	
13	MUELLE FUENTE HA PEDAL DE FRENO - BRAKE PEDAL END SPRING	BE25010000	
14	PUNTERA PEDAL FRENO - BRAKE PEDAL END	BE25010000	
15	PEDAL FRENO - BRAKE PEDAL	BE25010000	
16	MUELLE PEDAL FRENO - BRAKE PEDAL SPRING	BE25010000	
17	TORNILLO ESPECIAL 6X25 - 6X25 SPECIAL SCREW	BE25010000	
18	TORCA PEDAL FRENO - BRAKE PEDAL	BE25010000	
19	GLASER PEDAL FRENO - BRAKE PEDAL BEARING	BE25010000	
20	CASQUILLO SOPORTE PEDAL FRENO - BRAKE PEDAL SUPPORT	BE25010000	
21	TUERCA AUTOBLOQUEANTE CON INCLINACION - LOCK NUT	BE25010000	
22	TUERCA HEXAGONAL 6X25 - 6X25 HEXAGONAL NUT	BE25010000	
23	HEXAGONAL 6X25 - 6X25 HEXAGONAL SCREW	BE25010000	
24	CILINDRO PEDAL FRENO - BRAKE PEDAL SET	BE25010000	
25	TORNILLO ESPECIAL 6X25 - 6X25 SPECIAL SCREW	BE25010000	
26	TUERCA AUTOBLOQUEANTE CON INCLINACION - LOCK NUT	BE25010000	
27	TORNILLO ESPECIAL 6X25 - 6X25 SPECIAL SCREW	BE25010000	
28	ULS 6X25 - 6X25 ULS	BE25010000	
29	TUERCA REMACHABLE - RIVETABLE NUT	BE25010000	
30	HEXAGONAL 6X25 - 6X25 HEXAGONAL SCREW	BE25010000	
31	TUERCA AUTOBLOQUEANTE CON INCLINACION - LOCK NUT	BE25010000	
32	COLIN SOPORTE GUARDABARRIOS TRASERO - REAR FENDER SUP	BE25010000	

Chassis / Frame



N°	DESCRIPCION	PSE 400 cc.	Cant.
33	COMA SUJECION CUL. CD. NUMERO HOLDER	RF296031100	1
34	ARANDELA BX26X1.5 - 8X20X1.5 WASHER	T4035020	2
35	RODILLO CUA GARDENA SUP. UPPER CHAIN ROLL	BE25512014	1
36	CASQUILLO ROD. 25X1.2X25 - 60.9X1.2X25 ROLLING	BE25512018	2
38	RODILLO CUA GARDENA - 3.5X32X23.5 - LOWER CHAIN ROLL	BE25512002	1
39	SOPORTE CABALLETE - SIDE STAND HOLDER	BE230212022	1
40	ULS 8X30 - 8X30 ULS BOLT	T0000000	1
41	CASQUILLO CABALLETE / SIDE STAND BUSHING	BE25512001	1
42	CABALLETE / SIDE STAND BRACKET	BE250110010	1
43	TORNILLO ESPECIAL 8X28 - 8X28 SPECIAL BOLT	T0100000	1
44	TUBO PLÁSTICO PROTECCION MUELLE - SPRING PLASTIC TUBE COVER	BT17012050	1
45	MUELLE CABALLETE - SIDE STAND BUSHING / SPRING	BE25512004	1
46	CHASIS PSL 400 - PSE 400 FRAME	BF5400110100	1
47	TAPO / DEPÓSITO ACHEFE / OIL TANK CAP	BF5400100505	1
48	PIRA ADHESIVA ESPUMA 17 CM - FOAM STOPPER	BF5400100505	1
49	PIRA ADHESIVA ESPUMA 26 CM - FOAM STOPPER	BF5400100019	1
50	OTO. ALMACENAMIENTO TIROBO - STEERING LOCK SET	BE250010070	1
51	ANT-ROBO - STEERING LOCK	BE2500100010	1
52	AD. TRANSAPARENTE N. BARRIDOP - FRAME NUMBER CLEAR STICKLER	FL000135010	1
53	ALLEN 8X35 - 8X35 ALLEN BOLT	T0000000	1
54	PIRANTE CULATA. CILINDER HEAD BRACE	BF5400110050	1
55	TUFRON COTONATA DELA ESTHIDA - NUT WASH WASHER	T2000000	1
56	ULS 8X20 - 8X20 ULS BOLT	T0000000	1
57	TORCA: O-RING	T0000000	1
58	TUERCA NUT 16 - 16 BOLT	BF5400110052	1
59	CORDON CON LINDO - RACORD WITH FILTER	T0000000	5
62	SOPORTE MOTOR - FLYWHEEL SUPPORT	BF54001102200	1
63	ESTRIBO DEL LADO DERECHO - RIGHT FOOTREST	BF5400110000	1
64	ARANDELA WASHER	BE2500100002	1
65	MUELLE ESTRIBO DERECHO - RIGHT FOOTREST SPRING	T0000000	2
68	CASQUILLO ESTRIBO - FOOTREST BUSHING	BE23012003	1
69	CLAVILLA ZINC - ZINC PIN	BE250010006	1
		BE25502000	1

Chassis / Frame



N	DESCRIPCION	PSE. 4000 C.C.	C. UNID.
71	TORNOLO ESPECIAL MEXI 32 5013 SPECIAL SCREEN	13250103	1
71	FSTRIBO TOL 1900 LEFT FOOTREST	HF250010003	1
72	MUELLE ESTIBO ZOUERDO LEFT FOOTREST SPRING	BE25510052	1
74	TORNOLO ESPECIAL MEXI 32 5013 SPECIAL SCREEN	13250103	1
75	PROTECTOR CARTER CARTER PROTECTOR	BF540010903	1
76	ULS 6X10. 6X10. 6X10. 6X10.	70500016	3

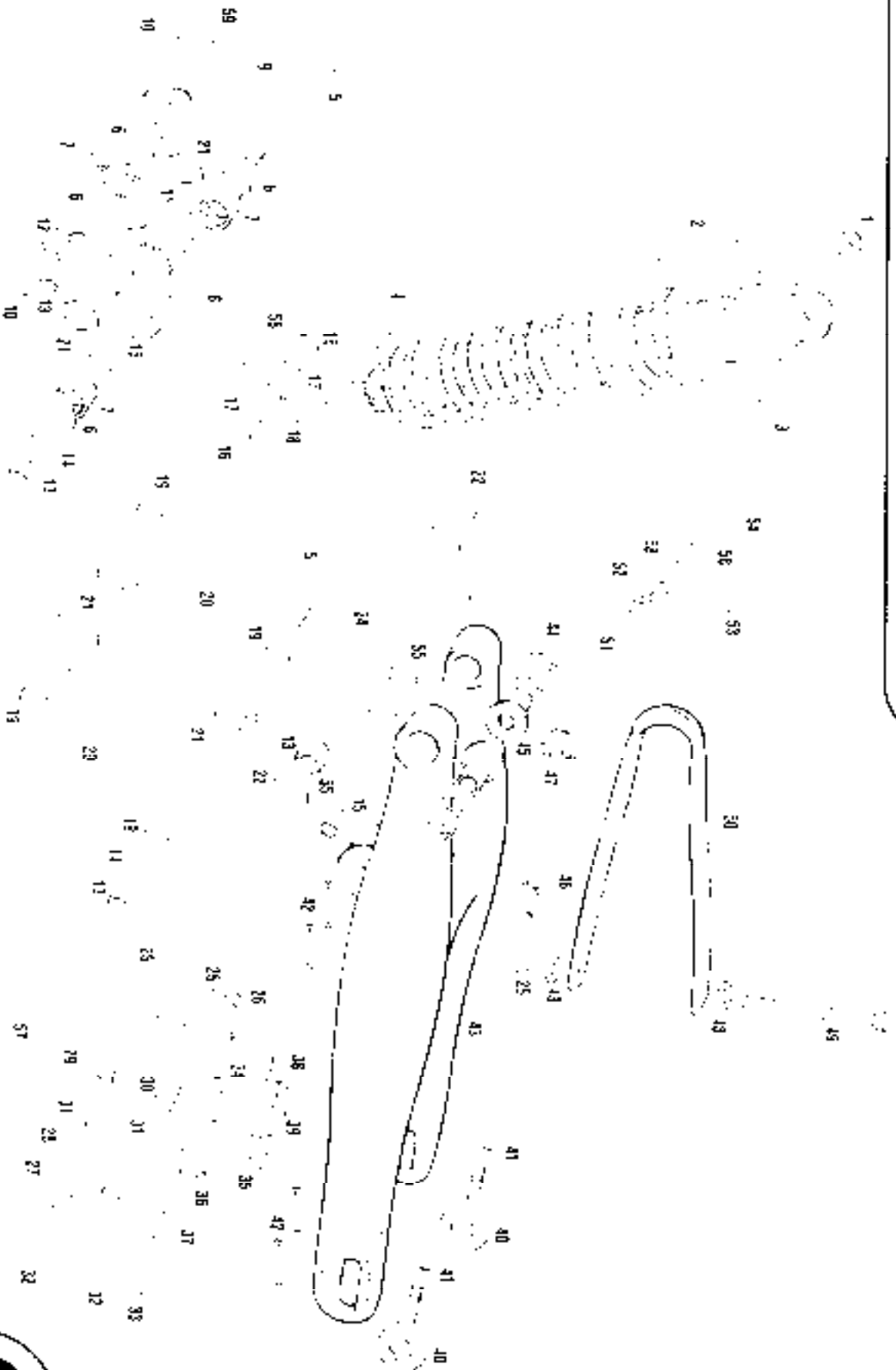
Chasis 4

Filtro de aire / Air filter



N°	DESCRIPCION	FSE JHH C.C.	Cant.
1	CTO CAJA FILTRO AIR FILTER BOX SET	BF250128001	1
2	TUERCA ME CON ARANDELA WASHER NUT MS	T2205006	5
3	PLATINA SOP JAULA FILTRO FILTER CARRIER SUPPORT	BF2562802	1
4	ABRAZADERA 50-70 12 CLAMP	L200048	1
5	GOMA TUBERIA CAJA FILTRO AIR FILTER BOX RUBBER	RFS400128017	1
6	PLATINA SOP JAULA FILTRO INTERIOR INNER FILTER CARRIER SUPPORT	UL25628020	1
7	JAULA FILTRO AIRE AIR FILTER CARRIER	BF25628002	1
8	FILTRO AIRE AIR FILTER	BE250128000	1
9	ARANDELA PLANA EX 15 PLAIN WASHFR EX15X15	T40M6116	1
10	VARILLA PALOM FILTRO AIR FILTER SEMI BOX	BE25628003	1
11	SEMI-CAJA TUBERIA FILTRO AIR FILTER SEMI BOX	BF250128015	1
12	PROTECTOR SUSP. TRAS. REAR SHOCK ABSORBER PROTECTOR	BE25020008	1
13	TORNILLO ESPECIAL EX20 SPECIAL SCREW EX20	T3005020	2
14	SEMI-CAJA ESPUMA FILTRO AIR FILTER FOAM SEMI-BOX	BE250128016	1
16	TIRA ADHESIVA 178 MM CAJA FILTRO AIR FILTER BOX STICKER	BL250128023	1
17	TIRA ADHESIVA 160 MM CAJA FILTRO AIR FILTER BOX STICKER	BF250128030	1

Basculante / Swingarm



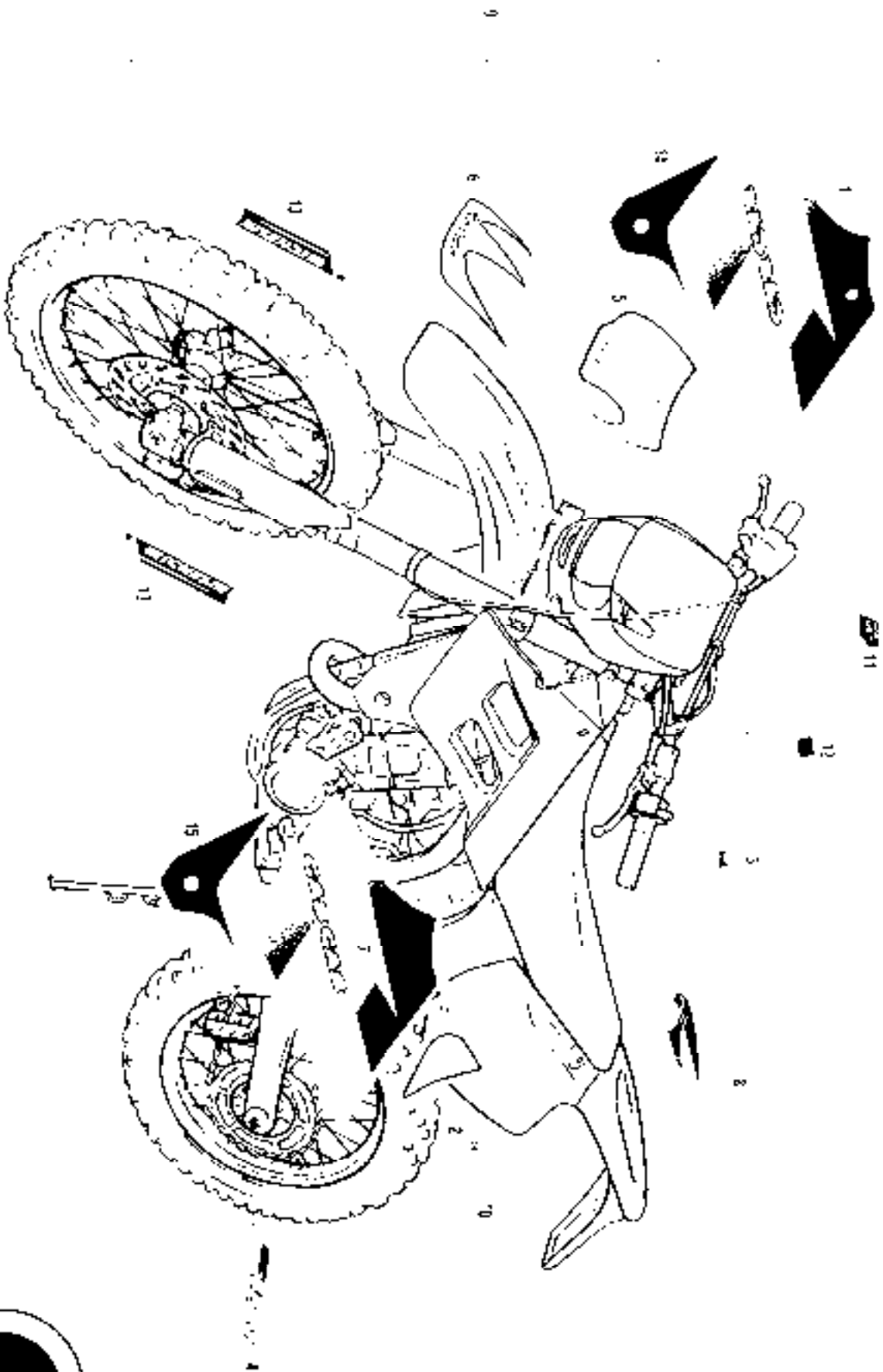
N°	DESCRIPCION	PSE 400 C.A.	C. ml.
1	TUERCA AUTOM. 100. SELF-LOCKING NUT M16	T211001	1
2	AMORTIGUADOR TRAS. HEAD SHOCK ABSORBER	09540714004	1
3	TORNILLO ESPECIAL M10X45. SPECIAL SCREW M10X45	T211055	1
4	TORNILLO M10X17X15 BUSHING M10X17X15	T211042	1
5	TORNILLO ESPECIAL M10X20. SPECIAL SCREW M10X20	T211010	2
6	PETE. 28X22X4 BASC. SPRING PLATE 28X22X4	BE25013011	1
7	GUÍA CARRILLOS GUÍA. SLIDERS REAR AXLE 28X15	RF25014011	1
8	BALANZIN. ROCKER ARM	BE25014033	1
9	SOPORTE BALANZIN DRECHO. RIGHT ROCKER FEEL SUPPORT	MF25014030	1
10	TORNILLO ESPECIAL 10X25X120. SPECIAL SCREW 10X25X120	T2110265	2
11	CASQUILLO M10X20X15. BUSHING M10X20X15	BE25014036	1
12	SOPORTE BALANZIN IZQ. LEFT ROCKER ARM SUPPORT	BE25014027	1
13	TUERCA AUTOBLOQUEANTE M14. SELF-LOCKING NUT M14	BL25013003	4
14	ARANDELA 15X25X2,5. WASHER 15X25X2,5	T2110225	1
15	CASQUILLO 14X22X57. BUSHING 14X22X57	BL25012011	2
16	ARANDELA REGULAJE 21X17X2. SETTING WASHER 21X17X2	T1601026	1
17	TORCIA BIELLA 15X3,5. CONNECTING ROD CRANK	BL23014015	2
18	CASQUILLO MORTIG D'EXHAUSTO. SHOCK ABSORBER BUSHING EXHAUST	RF25014035	1
19	CASQUILLO BIELLA. CONNECTING ROD BUSHING	BE25014032	4
20	BIELETA. CONNECTING ROD	BC25014034	2
21	ARANDELA 22,4X36X0,7 REGULAJE. SETTING WASHER 22,4X36X0,7	14022035	6
22	TAPON BASCULANTE. STOPPER CAP	RF25013011	2
24	EJE BASCULANTE. SWINGARM SHAFT	BE25012038	1
25	TUERCA AUTOBL. ALTA 16. HIGH SELF-LOCKING NUT M16	T2110009	2
26	TUERCA AUTOBLOQUEANTE 10 BACA. LOW SELF-LOCKING NUT M10	T2110001	1
27	PLATINA GUÍA CADENA. CHAIN GUIDE BRACKET	BL25012017	1
28	TIRA MUELON ANT RUIDO. ANTI-NOISE NYLON BAND	RF25010022	1
29	RODILLO GUÍA CAD. 13,56X37X215. CHAIN GUIDE ROLLER 13,56X37X215,3	BL25013032	1
30	RODILLO GUÍA CAD. SUP. UPPER CHAIN GUIDE ROLLER	RF25010014	1
31	CASQUILLO GUÍA CADENA. CHAIN GUIDE BUSHING	BE25013025	1
32	TORNILLO ESPECIAL 8X45. SPECIAL SCREW 8X45	T21105745	2
33	TORNILLO ESPECIAL 8X45. SPECIAL SCREW 8X45	T21105745	1

Chasis 6

N° DE DESCRIPCION	PUNTO 400 cc.	Cant.
34 BUSH SOP GUIA CADENA GRM. 500 GRAM. GUIDE SUPPORT SPACER	BE25512021	1
35 SOP GUIA CADENA / CHAIN GUIDE SUPPORT	BE25512018	1
36 BUSH SOP GUIA CADENA REC. S.M.M. CHAIN GUIDE SUPPORT SPACER	BL25512010	1
37 SILENBLOCK SOP GUIA CAD. / CHAIN GUIDE SUPPORT SILENBLOCK	BE25512019	1
38 HEXAGONAL 6X20 / HEX BOLT 6X20	T4025020	3
39 MUELLO ALA 6X16X15 / WASHER 6X16X15	T4025016	1
40 TENSOR RUFDA / WHFFI TENSOR	BE25519022	2
41 FULCRUM TUBULO M.V. CON ARRANQUE ALTA / HIGH SELF LOCKING NUT M.V.	T4025019	1
42 GUÍA PROTECTOR BASCULANTE / SWINGARM PROTECTOR GUIDE	UE25836503	4
43 BASCULANTE / SWINGARM	RF25017009	1
44 JALUAGUAS HVZ/16 / WEEDS BEARING HAZZ/16	BE25014011	4
45 GASQUILLO BASCULANTE / SWINGARM BUSHING	RF25811001	1
46 U.S. 5X12 / U.S. BOLT 5X12	T3305012	4
47 SOP GUÍJULO SOBRE BASC. / STANDARD HOSE HUI/GFR	BE25512006	1
48 ARANDELA 1/4X1/4 / WASHER 5/16X1/4	T4025015	2
49 ALLEN KEY / ALLEN BOLT 6X15	T3305015	1
50 PATA CADENA / CHAIN SPOKE	RF25011016	1
51 ALLEN KEY / ALLEN BOLT 6X15	T3305015	1
52 ARANDELA PLANA 6X12X1.5 / PLAIN WASHER 6X12X1.5	T3305015	2
53 PROCT. PINTA / PLASTIC ENDURO / ENDURO PLAST. CROMADA PROCT.	UE25005121	1
54 PLANTA PROTECTOR PINTA / PLANT PROTECTOR BRACER	UE25535021	1
55 RETEN. DESECKI / SEAL BRACKET	BE25010011	6
56 JALUAGUAS AL1216 / AL 1216 NEEDLES BEARING	BF25814009	1
57 C.T.G. TENSOR CADENA / CHAIN TIGHTEN SFT	BE25010078	1
58 GASQUILLO DISTANCIADOR PI. OF. / SPACER PIVOT BUSHING	UF250008010	1
59 TORNILLO ESPECIAL 1/4" X110 / SPECIAL SCREW 1/4" X110	T0211110	1

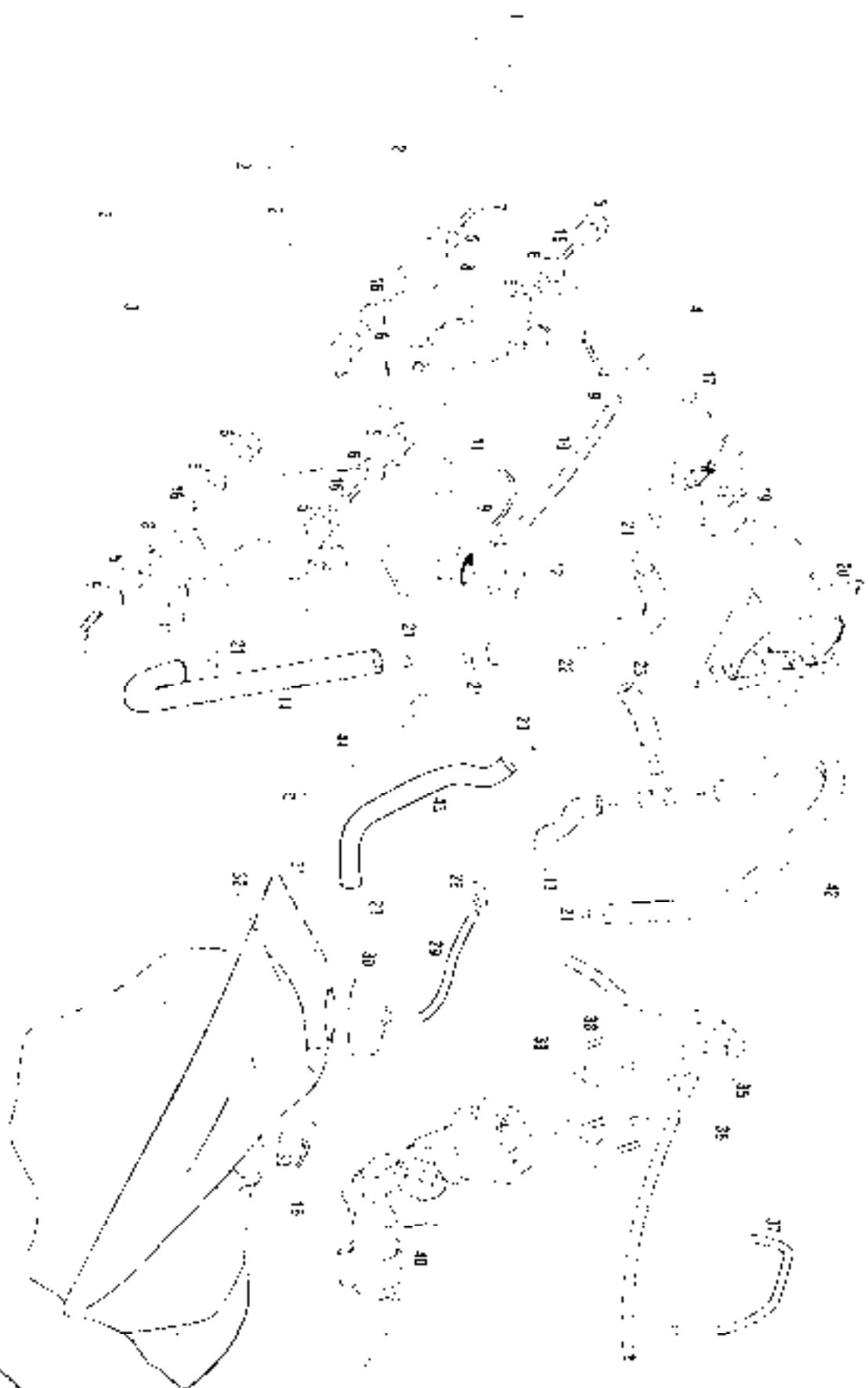
N°	DESCRIPCION	PSF 400 C.C.	Cant.
1	TUBO ESCAPE EXHAUST	8F540012000	1
2	ALLEN 6X25 ALLEN BOLT	13030025	2
3	ULS 6X10 16X16 UL5 BOLT	T0500010	2
4	PROTECTOR ESCAPE EXHAUST PROTECTION	8F540012002*	1
5	ARANDELA CARTON WASHER	8F5400119107	2
7	MUELLE SCAPLE EXHAUST SPRING	8C2561004E	2
8	ALLEN 6X50 2452 ALLEN BOLT	T0300006	2
10	ALLEN 6X30 2400 ALLEN BOLT	T0300030	1
11	ARANDELA SILENTBLOCK SILENCIOSO SILENTBLOCK WASHER	8F5400116001	1
12	SILENCIADOR TUBO ESCAPE EXHAUST SILENCER	8F5400126002	1
13	TUERCA ALTOBLOCANTE M3 SELF LOCKING NUT M3	T7100001	1
14	ALLEN 5X60 8X60 ALLEN BOLT	T0200030	1
15	CASQUILLO RUSHING	8F5400120013	1
16	SILENTBLOCK SILENTBLOCK	BE200000105	1
17	TUERCA CON ARANDELA BOLT WITH WASHER	8F5400119000	1
18	JUNTA 041 EXHAUST GASKET	*8F5400114010	1

Adhesivos / Decals



N°	DESCRIPCION	ESE 400 CC.	Cant.
1	ADH TAPA LATERAL RAD. DERECH. RIGHT SIDE RADIATOR COVER STICKER	BE250239002	1
2	ADH TAPA FILTRO AIR FILTER COVER STICKER	DL250199040	1
3	ADH LAVAVO MISION PRESSURE WATER CLEAN STICKER	PLM00199030	1
4	ADH ECRAN 41 BASCULANTE EC90041 STICKER APTI	ME5400130005	7
5	ADH FANÓ DEL ANTERO FRONT LAMP STICKER	BE250239001	1
6	ADH GUARDABARRIOS DEL FRENTE FRONT FENDER STICKER	DL250239021	1
7	ADH TAPA LATERAL RAD. IZQ. LEFT SIDE RADIATOR COVER STICKER	BE250239050	1
8	ADH GUARDABARRIOS TRASERO REAR FENDER STICKER	BE250239030	1
9	CTO ADH FOLIOS STICKERS SET FOR EC-90041	BE250239030	1
10	ADH PUSH TAPA FILTRO PUSH AIR FILTER COVER STICKER	PLM00199030	1
11	ADH ADVERTENCIA ITARRANQUE WARNING STARTER FUSE STICKER	PLM00199030	1
12	ADH GASOLINA SIN PLOMO UNLEADED FUEL ONLY STICKER	BE25738055	1
13	ADH MICHEN PROT FURQUETA FRONT FORK STICKER	PLM00199030	2
14	ADH INF RADIADOR DERECH. RIGHT INFERIOR RAD. COVER STICKER	BE250239037	1
15	ADH INF RADIADOR IZQ. LEFT INFERIOR RAD. COVER STICKER	DL250239058	1

Depósito / Fuel tank



N° DESCRIPCION INE 408 c.c.

Cant.

1	MEJILLA PARA BRONCO DERECHO RADIADOR	BE25620001	1
2	TOPE PARA LA RADIADOR RADIADOR BACK END	BE25620001	1
3	MEJILLA PARA BRONCO IZQUIERDA RADIADOR	BE25620002	1
4	RADIADOR DERECHO RADIADOR	BFS400102006	1
5	SILENT BLOCK (PUMP) RADIADOR SILENT BLOCK	BE25620005	2
6	CASQUILLO RADIADOR RADIADOR BUSHING	BE25620006	2
7	TORNILLO ESPECIAL PARA RADIADOR	TC2560015	2
8	PLASTICO LATERAL RADIADOR RADIADOR PROTECTOR	BE25620015	2
9	ARMAZON PARA COBRO 1/2 CLAMP	BE25620015	2
10	TUBO PARA RADIADORES RADIADORES CONNECTORS	BE256200132214	1
11	TUBO SUPORTE RADIADOR RADIADORES SUPPORTE HOSE	BE256200132214	1
12	TAPON RADIADOR RADIATORS TAP	BE256200132215	1
13	ARMAZON PARA COBRO 25 CLAMP	TC2560015	1
14	TUBO RADIADOR-CULATA SUP. DERECHO RADIADOR TO CO. HEAD HOSE	BE120130052	1
15	TUBO RADIADOR-CULATA SUP. IZQUIERDA RADIADOR TO CO. HEAD HOSE	BFS400102012	1
16	ALLEN Llave 6x20 ALLEN BOLT	TC2560020	2
17	CASQUILLO PARA RADIADOR PARA RUSHING	LC2560016	2
18	MODULO VENTILADOR PARA RUSHING	LC2560017	1
19	PROTECTOR PARA RADIADOR PARA PROTECTOR	LC2560018	1
20	ARMAZON PARA COBRO 21 25 CLAMP	LC2560019	2
21	TUBO RADIADOR-CULATA SUP. DERECHO TUBO RADIADOR TO CO. HEAD HOSE	BFS400102012	1
22	TUBO RADIADOR-CULATA SUP. IZQUIERDA TUBO RADIADOR TO CO. HEAD HOSE	TC2560019	1
23	ARMAZON PARA COBRO 25 CLAMP	TC2560019	1
24	SOPORTE TUBO RADIADOR-CULATA SUP. DERECHO TUBO RADIADOR TO CO. HEAD HOSE	BE25620017	1
25	TUBO DE VAPOR RADIADOR TAPON GASOLINA FUEL HOSE TO FUMP	BE25620017	1
26	TAPON DEPOSITO GASOLINA FUEL TANK CAP	BE25620017	1
27	DEPOSITO FUEL TANK	BE25620017	1
28	CASQUILLO LLORONTE CULATA TANK BUSHING	BE25620017	1
29	SOPORTE ASIENTO DEL ANTERO SEAT FRONT SUPPORT	BE25620017	1
30	TUBO COMBUSTIBLE PARA IZQUIERDA LEFT FUEL INJECTION HOSE	BFS400102007	1
31	TUBO COMBUSTIBLE PARA DERECHO RIGHT FUEL INJECTION HOSE	BFS400102007	1
32	TUBO SUPORTE DEPOSITO EC 2001 FUEL TANK RUBBER BAND HOLDER	BE25620020	1
33	ALLEN Llave 6x20 ALLEN BOLT	TC2560020	2
34	TAPA BOMBA INYECCION INJECTION PUMP COVER	BFS400102008	1

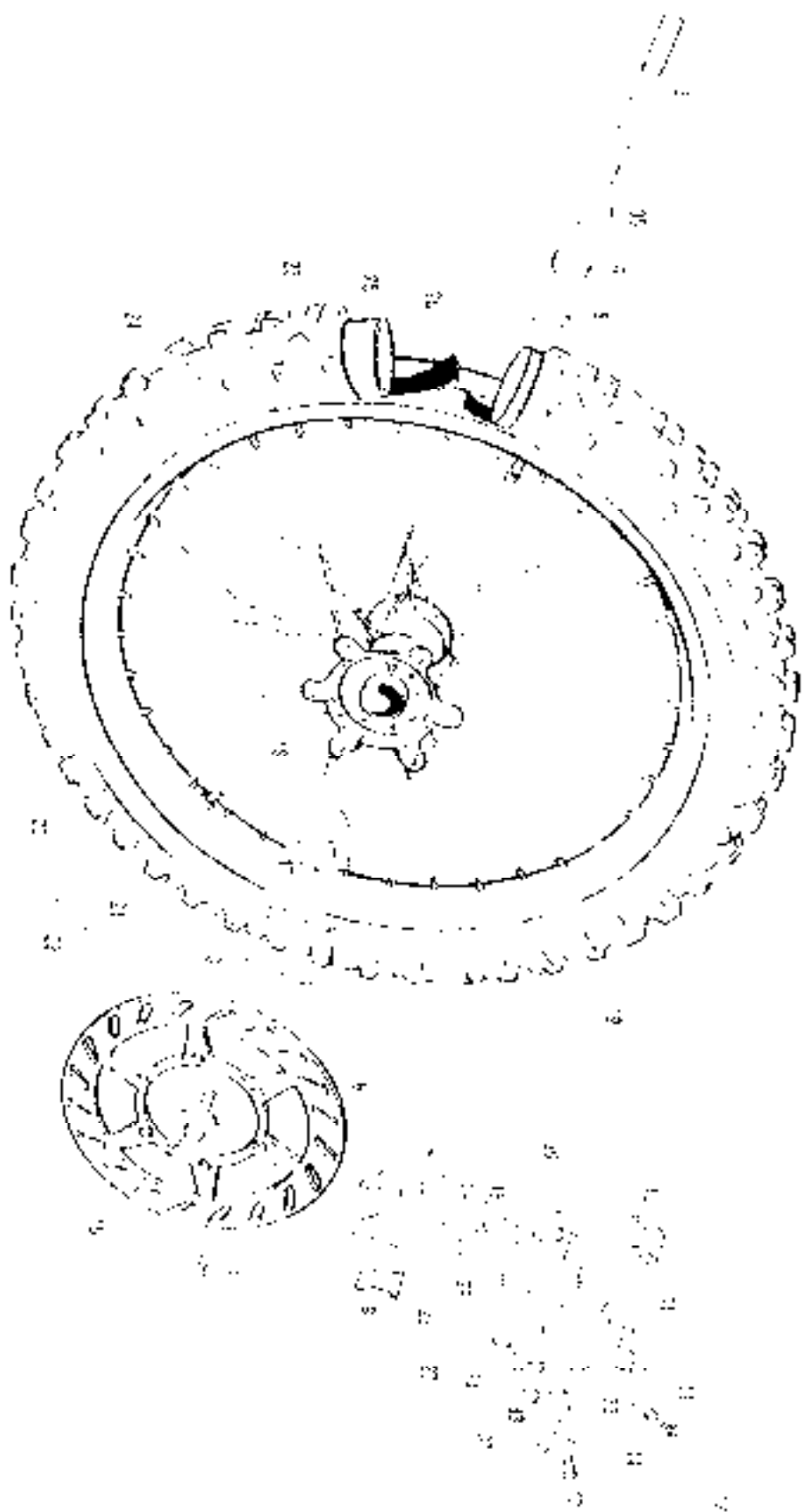
Depósito / Fuel tank



N°	DESCRIPCION	PSE. 400 c/c.	Cant.
40	BOMBA GASOLINA FUJI PUMP	MFS407180100	1
41	RADIADOR/GUILLERO LEFT RADIATOR	MFS406132001	1
42	C/C. TUBOS RADIADOR A BOMBAS AGUA INDICATOR TO WATER PUMP HOSE SET	MFS406132000	1
43	TURO DE SVAPORIZACION CULATA CYL. HEAD DESTAR HOSE	MFS406116100	1
44	TUBO VACIADOR DEPOSITO ACEITE. OIL TANK EMPTY HOSE	MFS406109130	1

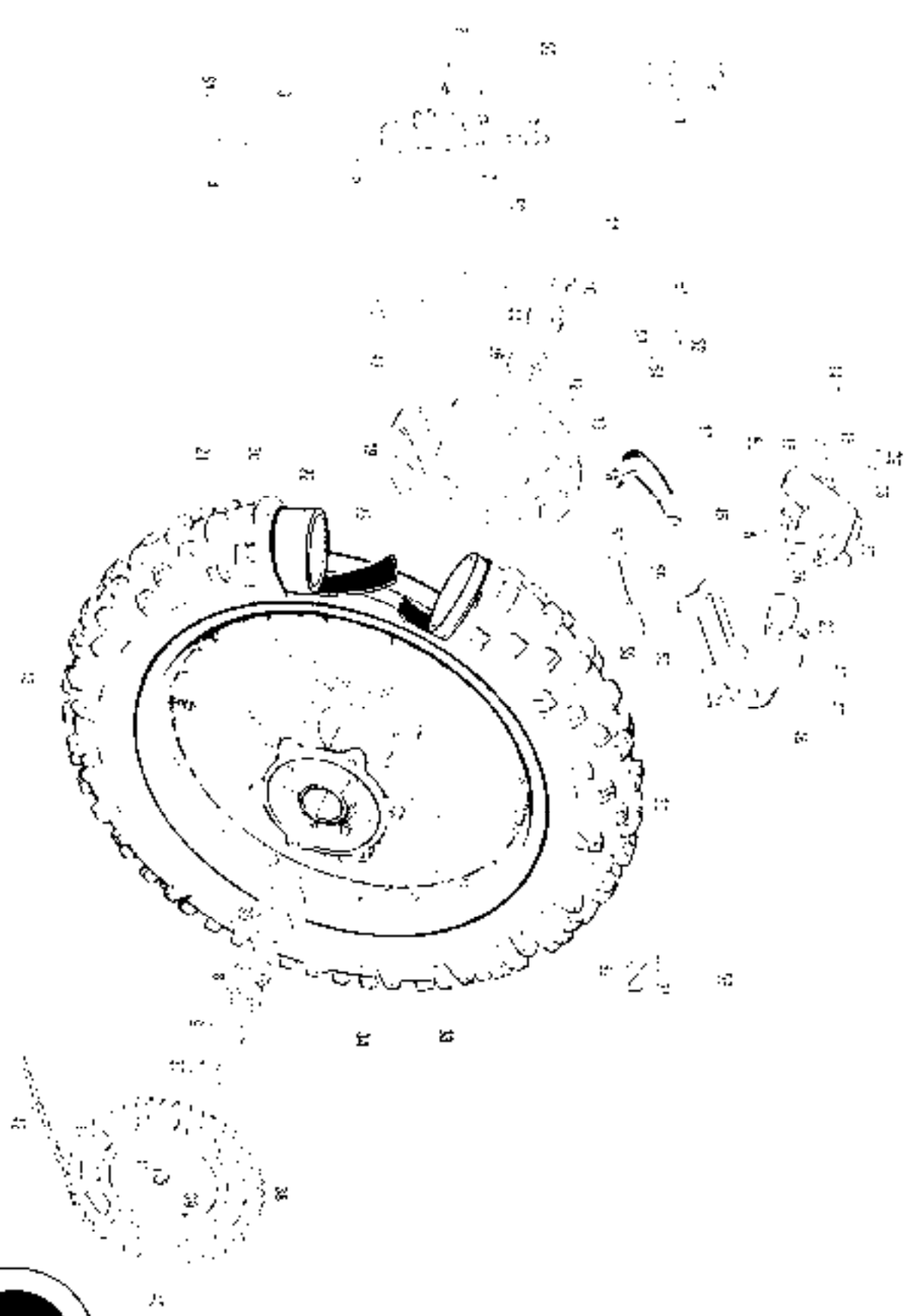
N° DESCRIPCIÓN	FST: 400 c.c.	Cant.
1	110 RUEDA DELANTERA FRONT WHEEL	1
2	EJE RUEDA DELANTERA FRONT WHEEL AXLS	1
3	GUÍA VÁLVULA HUELDA DEL LARGO LONG FRONT CHECK SPIDER	1
4	WATER PUMP WATER PUMP FRONT WHEEL CASSET	2
5	CONJUNTE BEARING	2
6	DISCO FRENO DELANTERO FRONT BRAKE DISC	1
7	PASTILLAS DE FRENO DELANTERO FRONT BRAKE PADS	1
8	HEMISFERIO AL 6X14 HELIXAGONAL BOLT 6X14	2
9	PLATINA DE SUJ. PASTILLAS DEL. FRONT BRAKE PADS HOLDING BRACKET	1
10	SOPORTE PARA VÁLVULA LARGO LONG FRONT CHECK SPIDER	1
11	GUÍA FRENO DELANT. FRONT BRAKE CALIPER	1
12	LATIO FRENO DELANTERO FRONT BRAKE HOSE	1
13	ACCORRO DEL VÁLVULO 1/2" X 3/4" HOSE HOLDER VALVE	1
14	BOHORIA PARA VÁLVULO 1/2" X 3/4" HOSE WASHER NYLON	2
15	CONJUNTO EJE RUEDA DELANTERA FRONT WHEEL AXLS HOLT	1
16	PLATINA DE SUJ. PASTILLAS DELANT. FRONT BRAKE PADS HOLDER BRACKET	1
17	GUÍA VÁLVULO FRONT	1
18	BUJAS HUEL DELANT. SERP. TALLON FRONT WHEEL RUB	1
19	LATA DE LUBR. FRONT	1
20	TUERCA ANILLO DELANTE. FRONT SPOKE NUT	36
21	TUERCA CONTRA LA VIBR. ESTRI. 1/8" NUT WITH LOCK WASHER 1/8"	1
22	ACAPRE GUILLERMA DEL. FRONT TIRE HOLDER	1
23	RADIO DEL VÁLVULO FRONT SPONE VALVE	1
24	VALVULICO DEL 50 10-21 FRONT TIRE SO VALV	1
25	CAMARERA DEL VÁLVULO FRONT AIR HOSE	1
26	PROTECTOR BANDA DELANTERA FRONT BRAKE BAND	1
27	PISTÓN COMP. PUNTA HUEL DEL. FRONT BRAKE CALIPER PISTON	2
28	TORNILLO COMP. PUNTA HUEL DEL. FRONT BRAKE CALIPER PISTON 6MM	1
29	BUJAS PUNTA HUEL DELANTE. FRONT BRAKE CALIPER SEAL	2
30	TORNILLO GUÍA PARA PUNTA FRENO DEL. FRONT BRAKE CALIPER BOLT	1
31	TORNILLO GUÍA PARA PUNTA FRENO DEL. FRONT BRAKE CALIPER BOLT	1
32	SALIDA VÁLVULO PARA VÁLVULO DEL. FRONT BRAKE CALIPER BLEEDER	1

Rueda delantera / Front wheel



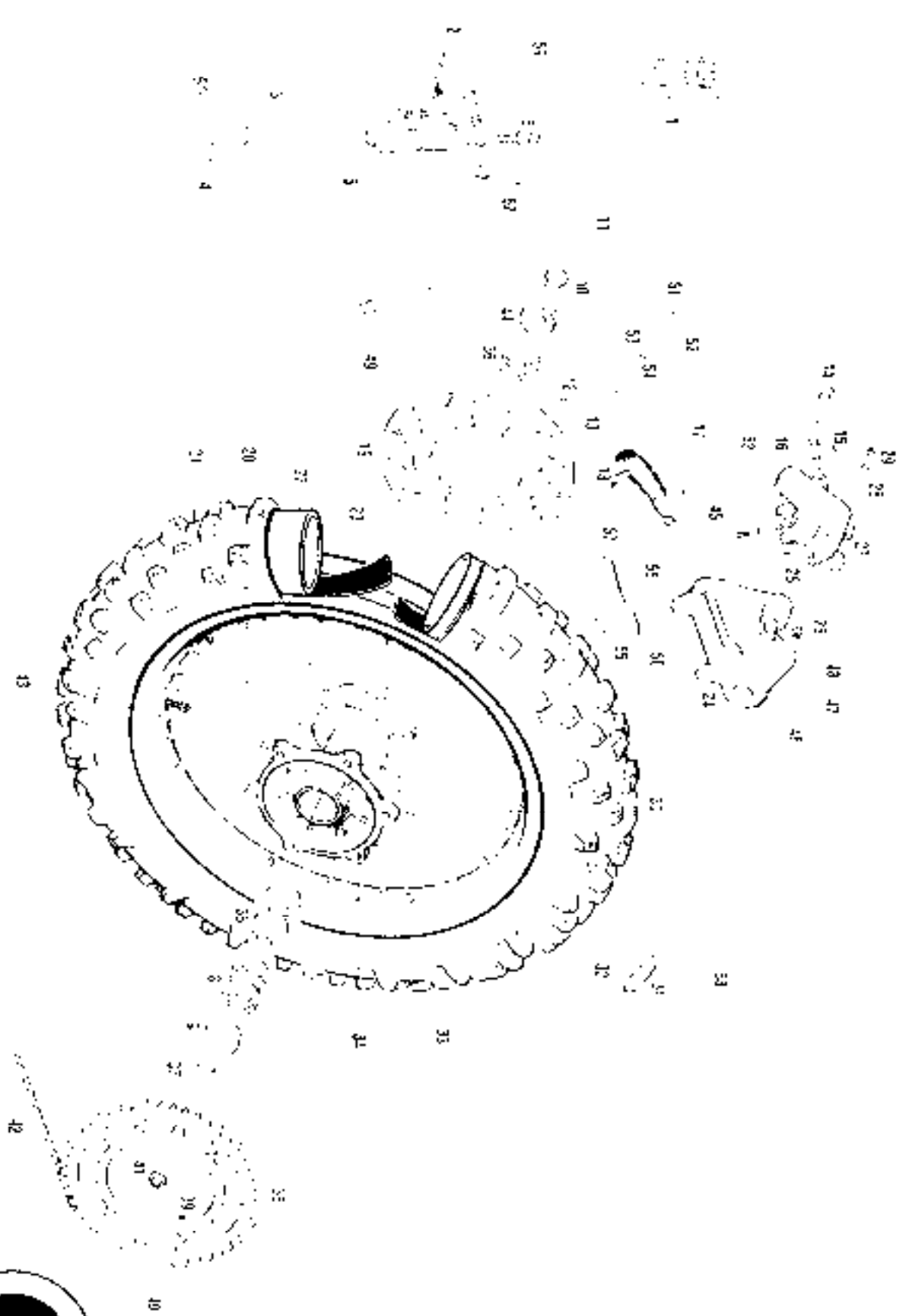
N°	DESCRIPCION	PSE 400 c.c.	Camb.
35	PROTECTOR PINZA FRENO DEL MOTOR BRAKE CALIPER BOLT PROT.	BE250022035	1
36	PASADOR PASAJE LLAVES FRENO DEL FRONT BRAKE PAD LOCK	BE250022041	1
38	CUBIERTA ADOP. RUEDA DELANTERA FRONT WHEEL COVER	BE250022042	1
38	TAPON SANGRADOR BLEEDOFF CAP	BE250022045	1
37	PROTECCIÓN PASADOR PASE. TUBO PROTECTOR P.T.	BE250022095	1

Rueda trasera / Rear wheel



N°	DESCRIPCION	FSE 400 C.A.	Cant.
1	DEPOS TO LUBRIDO DE FREIOS BRAKE FLUID TANK	RF25613016	1
2	ABLAZADORA NUEVA M. L. & SPRING CALIPER WHEEL	BE25613044	1
3	MASADORA EXCA PEDAL FRENO BRAKE PEDAL PUMP	RF25622026	1
4	CLAVILLA PASADOR PIVOTE EXCA BRAKE PIVOT PIN STOPPER	RF25622027	1
5	BOMBA FRENO TRAS MISMA MISMA REAR BRAKE PUMP	BE25622028	1
6	INTERFLOTOR STOP BOMBA MISMA MISMA BRAKE STOP SWITCH	UL25622029	1
7	ARMADILLO ALA TIGUILLO EXCA HOSE WASHER EXCA	C150750	1
8	RODAMIENTO 6204 2RS4 BUSHING EXCA WNSP	C190710	1
9	REFUEL BUELA TRASERA REAR WHEEL SEAL	BE25622030	1
10	DISTANCIA CUCH PUEDA TRASERA COMO SHORT REAR WHEEL SPACER	BE25622030	1
11	BUE BUELA TRASERA REAR WHEEL AXES	BE25622032	1
12	TORNILLO EXCA PIVOTE EXCA DISCO TRAS REAR DISC PIVOT NUT SCREW EXCA	BE25622036	1
13	PLACA A SUJEST LAS TRAS REAR BRAKE PADS HOLDER BRACKET	BE25622036	1
14	TORNILLO SUJECION PINZA CALIPER WHEEL SCREW	BE25622036	1
15	TAPON SUJECION PINZA CALIPER WHEEL CAP	RF25622038	1
16	SUJECION BLEEDER	BE25622034	1
17	CAT BUELA FRENO TRASERO MISMA MISMA REAR BRAKE HOSE	UL25622038	1
18	PASTILLAS DE FRENO TRAS REAR BRAKE PADS	BE25622011	18
19	DISCO FRENO TRASERO REAR BRAKE DISC	HE25622015	18
20	RODAMIENTO LARGO FRENO EXCA EXCA DISCO SPRING BEAMS	BE25622014	18
21	CAJON DE BARRA LARGO EXCA EXCA SPRING BEAMS DE SPRING BRAKES	UL25622014	18
22	CAJON TRASERA EXCA REAR AIR HOSE EXCA	BE25622013	18
23	RECTIFICADORA TRASERA EXCA EXCA	UL25622013	18
24	SOPORTE PINZA TRASERA REAR CALIPER SUPPORT	BE25622013	18
25	TORNILLO GUIA GUIDE SCREW	BE25622013	18
26	CAJON PASADORA DUST CAP	BE25622013	18
27	CAJON FRENO TRASERO REAR WHEEL CALIPER	BE25622013	18
28	PASEADOR PASADORA REAR WHEEL CALIPER	BE25622013	18
29	RECTIFICADORA PASADORA REAR WHEEL CALIPER	BE25622013	18
30	WASHER BARRA LARGO EXCA EXCA SPRING BEAMS DE SPRING BRAKES	BE25622013	18
31	WASHER BARRA TRASERA REAR WHEEL CALIPER	BE25622013	18
32	WASHER BARRA LARGO EXCA EXCA SPRING BEAMS DE SPRING BRAKES	BE25622013	18

Rueda trasera / Rear wheel



N°	DESCRIPCION	PNL 400 CAC	Cant.
33	PISTON 75X98 - REMPLAZAR	BE250116001	1
34	CUBO RUEDA TRASERA REAR WHEEL HUB	BE25718007	1
35	RODAS, SOLDA TRAS DEL PLANTON DEL SMOLETA	H572700	1
36	COJINETE COXILERS BEARING COXILERS	C190001	1
37	PISTON CILINDRO TUBO LARGO LONG BORE PISTON	BL26610001	1
38	CORCHAS DE SPRINGWET ZMS	RF25510004	1
39	PISTON CILINDRO TUBO LARGO LONG BORE PISTON	BE25510006	1
40	ALLEN COXILERS DE CONJUNTO ALLEN ROCKET ARM	RF25610000	1
41	TORNILLO DEL COJINETE TRASERO REAR WHEEL SEAL LOCKING NUT	BE25510003	1
42	CAJONCILLO DE CHAVILLO ROD	SF250010006	1
43	TORNILLO DEL COJINETE REAR SPKME NUT	BE250019010	36
44	RETEÑ. SEAL	C190010	1
45	CAJONCILLO DE CHAVILLO ROD	BE250017007	1
46	PISTON CILINDRO TRAS REAR BRAKE CALIPER PISTON	BE250020044	1
47	TOXICAPISIÓN DEL CILINDRO TRAS REAR BRAKE CALIPER PISTON O-RING	BE250022007	1
48	RETEÑ. PISTON CILINDRO TRAS REAR BRAKE CALIPER PISTON SEAL	UL250022008	1
49	HELENA CILINDRO CILINDRO SENSOR	ST257100000	1
50	SOPORTE SENSOR HALL HALL SENSOR HOLDER	BE250100012	1
51	MANIVELA MAGNET	BE250100010	1
52	SOPORTE MANIVELA MAGNET HOLDER	BL256034008	1
53	MANIVELA MAGNET	T40030000	1
54	TUERCA DEL CILINDRO TRASERO	T21000000	1
55	TORNILLO DEL COJINETE DEL SMOLETA	T21000000	2
56	ULS OXIGENOS DEL TAXI	T00000012	2
57	ULS OXIGENOS BOLT NUT	T00000010	1
58	PISTON RUEDA TRASERA REAR WHEEL SEAL	BE2500181000	1
59	TUBO LUBRIFICACION FRENO BRAKE FLUID TUBE	BL250010010	1
60	MANIVELA MAGNET	T40030000	1
61	MANIVELA MAGNET	T40030000	1
62	BIHDA UNEX CORTA 2,5X98 - 2,5X98 SHORT CRAMP	BE250034010	2

Suspensión delantera WP / WP Front fork



N°	DESCRIPCION	ENT 400 C.C.	Cant.
1	CIG TRIPOL BOTELLA 65X115 - OUTER TUBE CURSE CARPATA 5	BC250014107	2
2	BARRA SUSPENSION U 5457 - WATER TUBE 54 57	BC250014115	2
3	GUAGNER BOTELLA 40X40X20 - OUTER TUBE GLACIER 40X40X20	BC250014134	2
4	ARM. CUFFRE 645 - CLOSER 645X45	BC250014136	2
5	BARRA SUSPENSION U 43X50 15455 - CIGRA SCAL 40X50 - 60X55	BC250014212	2
6	CAP SR55 - SR55 CAP	BC250014189	2
7	GUARDAPOLVO SUSPENSIÓN U 10-43 - DUST COLLECTOR 43	BC250014191	2
8	TUBO BOTELLA U-43 - OUTER TUBE 43	BC250014200	2
9	GLACIER BARRA U-43 64X20X10 - WATER TUBE GUAGNER 43 64X20X10	BC250014114	2
10	SEEGUIDO 53 - SLEIGER D 53	BC250014274	2
11	DETENEDOR U 62 20X100X100 - 46 PINNLE	BC250014240	2
12	CARRILLO 532 - 100	BC250014113	2
13	PISTÓN U 100 100X100 1546 - PISTON	BC250014173	2
14	VALV RECUPERACION - 5456	BC250014178	2
15	TORCIA U 61 61X15 - 0 61X15	BC250014218	2
16	MUFLA U 100 100X100 - HYDRAULIC SPRING	BC250014172	2
17A	DISTANCIADOR 42X20X25 - SPACER 42X20X25	BC250014170	2
17B	DISTANCIADOR 42X20X50 - SPACER 42X20X50	BC250014184	2
17C	DISTANCIADOR 42X20X50 - SPACER 42X20X50	BC250014222	2
18	APC 2 645X42X15 - WASHER 275X42X15	BC250014229	2
19	ARREGLO U 61 F BOTELLA - NOCTILE SPRING SET	BC250014221	2
20	CONJUNTO APRESETE U 23 23X15 - FIX U 61 60 7	BC250014105	2
21	DISTANCIADOR 2 36 2X25 5X3 - SPACER 4	BC250014210	2
22	MUFLA REBOTE D 14 5 14X12 - REFROU 10 500 13	BC250014176	2
23	C 5370 - 5370	BC250014194	2
24	ARREGLO U 61 61X100 - 61X100 SPRING	BC250014135	2
25	PISTON U 100 100X100 - 100X100	BC250014197	2
26	ARREGLO U 61 61X100 - 61X100 SLF	BC250014205	2
27	TUBO 64 64X25 - 64X25	BC250014208	2
28	ARREGLO U 61 61X100 - 61X100 SLF	BC250014202	2
29	TUBO U 61 61X100 - 61X100	BC250014204	2
30	TORNILLO NEG - 64X100 1546 - 51 - REGULADOR SURF 1	BC250014116	2

Suspensión delantera WP / WP Front fork



N	DESCRIPCION	PRE. 4000 CA.	CANT.
31	BOLSA FUNDIDA PARA LA P.A. ALVE SPR 43	BC25114155	1
32	PISTON COMPRESION COMPRESION PASION	BC25011140	1
33	APARCELA PARA BARRAJA 1 VALVE WASHREF	BC250014015	2
34	TOP CA COMPRESION B.P. 2100 COMPRESION 0710	BC25011404	1
35	VALVULA DE TAPON COMPRESION CA 16X22 COMPRESION CAPTASHERS	BC250114138	2
36	TAPON COMPRESION COMPRESION CAP	BC250014108	3
37	VALVULA SUSPENSION ZQUERDA LEFT FRONT BOTTLE END	BC250114145	1
38	VALVULA BOTELLA DERECHA RIGHT FRONT BOTTLE END	BC250114142	1
39	TOCADO BASE BOTELLA 16X20 BOTTLE BASE SCREW 16X20	BC250014119	2
40	SUSPENSION DELA IEMAR 43 000 16X20 SUSPENSION FRONT HOOR	BC25011406	1
41	SEGURITO FRONT	BC250114110	2
42	JUEGO PROTECTOR HORNQUELLA FOUR PROTECTORS SET	140000310	1
43	VALVULA WASHREF WASHREF 6X18X15	BC25011052	3
44	CASQUILLO PROTECTOR SUSPENSION FOUR PROTECTOR BUSHING	BC250114155	1
45	UNION LATIGUILLITO LEFT HOSE HOLDER	BC250014158	1
46	FLACON LATIGUILL DERECHA RIGHT HOSE HOLDER	TOCADO 16	1
47	TORNILLO SCREW	TORNILLO 16	1
48	TORNILLO SCREW		1

Complete model drawings / 100 sheets set

Complete model / 60 pages

Sketches complete / 6000 views

Dynamic model / Gear set

Cartes dentées / 7000 crachées

Cartes dynamiques / 1400 crachées

1

2

4

5

DESPIECE

MOTOR

1
Crankshaft / Kurbelwelle

2
Cylinder / Zylinderblock

3
Piston / Pleuel

4
Cylinder head / Zylinderkopf

5
Culata / Cylinder head

6
Double spring / Pleuel pump

7

8

9

10

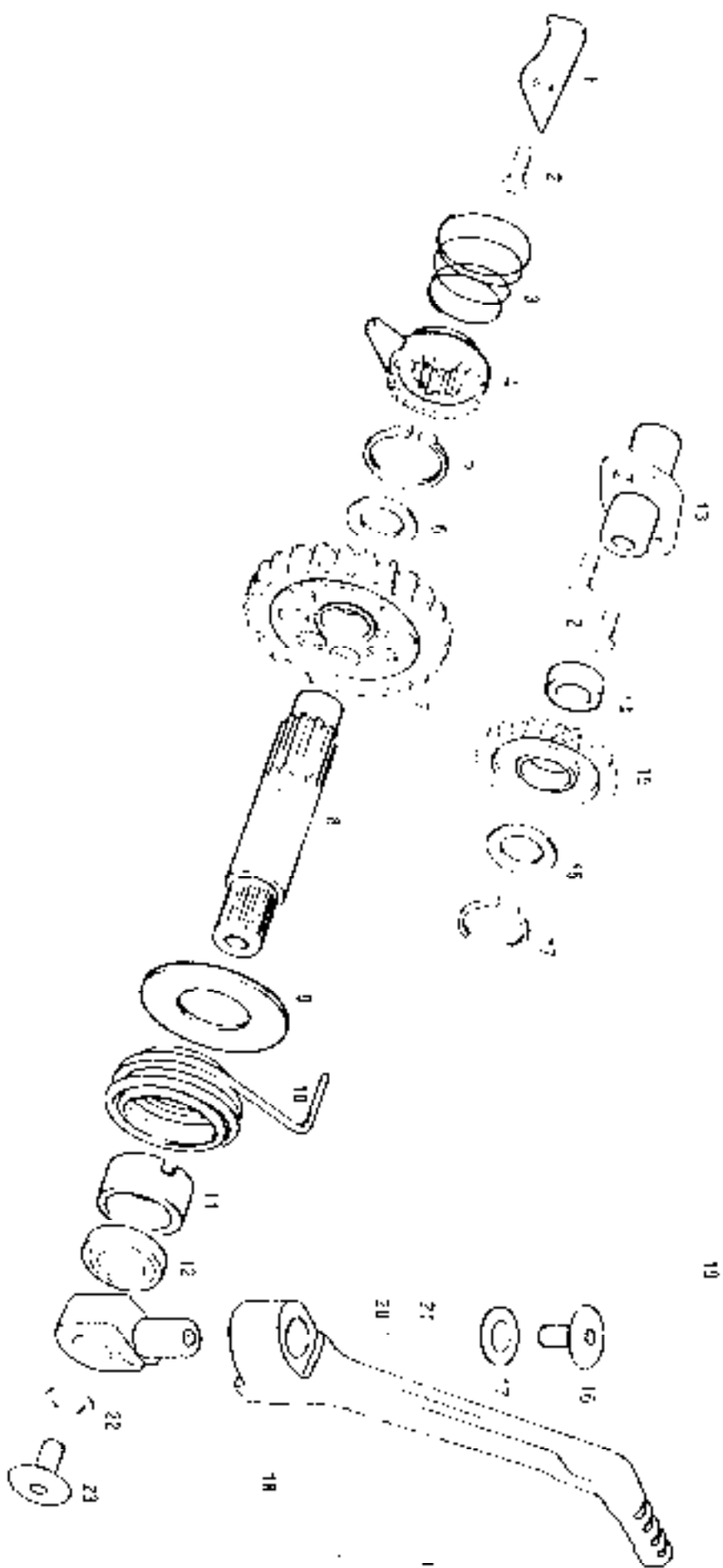
11

12

PART LIST

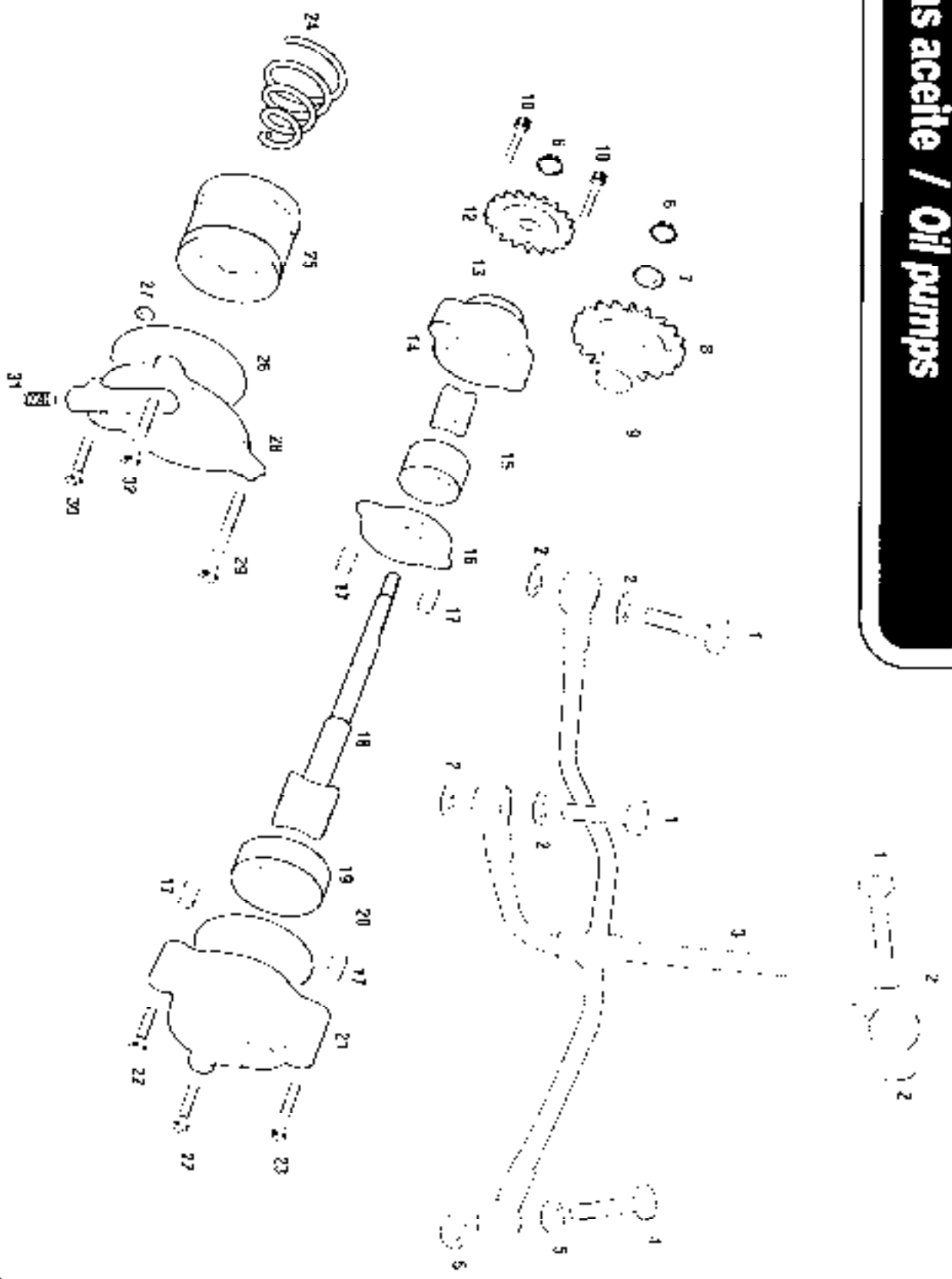
ENGINE

Conjunto pedal arranque / Kickstart set



N°	DESCRIPCION	ENL. 4IM) C.C.	Cant.
1	PLATIA TRINQUETE ARRANQUE KICKSTART RATCHET BRACKET	MF5401136005	1
2	BUSHING 20X20X15	ME2501260017	2
3	MUJETA TRINQUETE ARRANQUE RATCHET PINION SPRING	MF2503000036	1
4	TRINQUETE ARRANQUE KICKSTART RATCHET PINION	ME2501260034	1
5	SEEDER DE 20 ARRANQUE START SEEGER 20	ML2503000032	1
6	SPARO 10PE 20X20X15ESP ARRANQUE ENL WASHHER 20X15X1	ME2503000035	1
7	PINON ARRANQUE STARTER SHAFT	ME2501260022	1
8	SHA ARRANQUE KICKSTARTER SHAFT	ME2501260028	1
9	APRENDELA ARRANQUE 20X15X1 KICKSTARTER 1/4 SHILH 20X15X1	ME2503000031	1
10	MUJETA ARRANQUE KICKSTARTER SPRING	MC2503000037	1
11	CASO CENTRADOR MUJETA ARRANQUE KICKSTART SPRING BUSHING	ME2503000031	1
12	RETER PEDAL ARRANQUE 20X30X7 KICKSTART PEDAL SEAL 20X30X7	ME2501300052	1
13	SOPORTE PINON PINION SUPPORT	MF5401120016	1
14	CASQUILLO SOPORTE PINON PINION SUPPORT BUSHING	-	1
15	PINON 17 ARRANQUE KICKSTART AMBER PINION	MF5401120021	1
16	MOLINDELA PINON ARRANQUE 17X15 15X16 WASHHER 24 15 15X16	ME2503000032	1
17	SEEGER LUE 18 LUNINGAQUE CLUTCH AXLE SLEIGH 18	ML2503000037	1
18	PEDAL 18 LUNINGAQUE CLUTCH AXLE SLEIGH 18	MF2503000036	1
19	OTO PEDAL ARRANQUE ALUMINUM 18 KICKSTART PEDAL BASE	ME2501250030	1
20	MUJETA MUJETA PEDAL ARRANQUE KICKSTART PEDAL SET	ML2503000036	1
21	RODAS MUEQUELLA PEDAL ARRANQUE KICKSTART PEDAL BASE SPRING	ML2503000032	1
22	ARRANGELA 6X20X15 WASHHER 6X20X15	T 100600003	2
23	TORNILLO 6X12 CABOTS FORK TORX SCREW 6X12	T 031600003	2

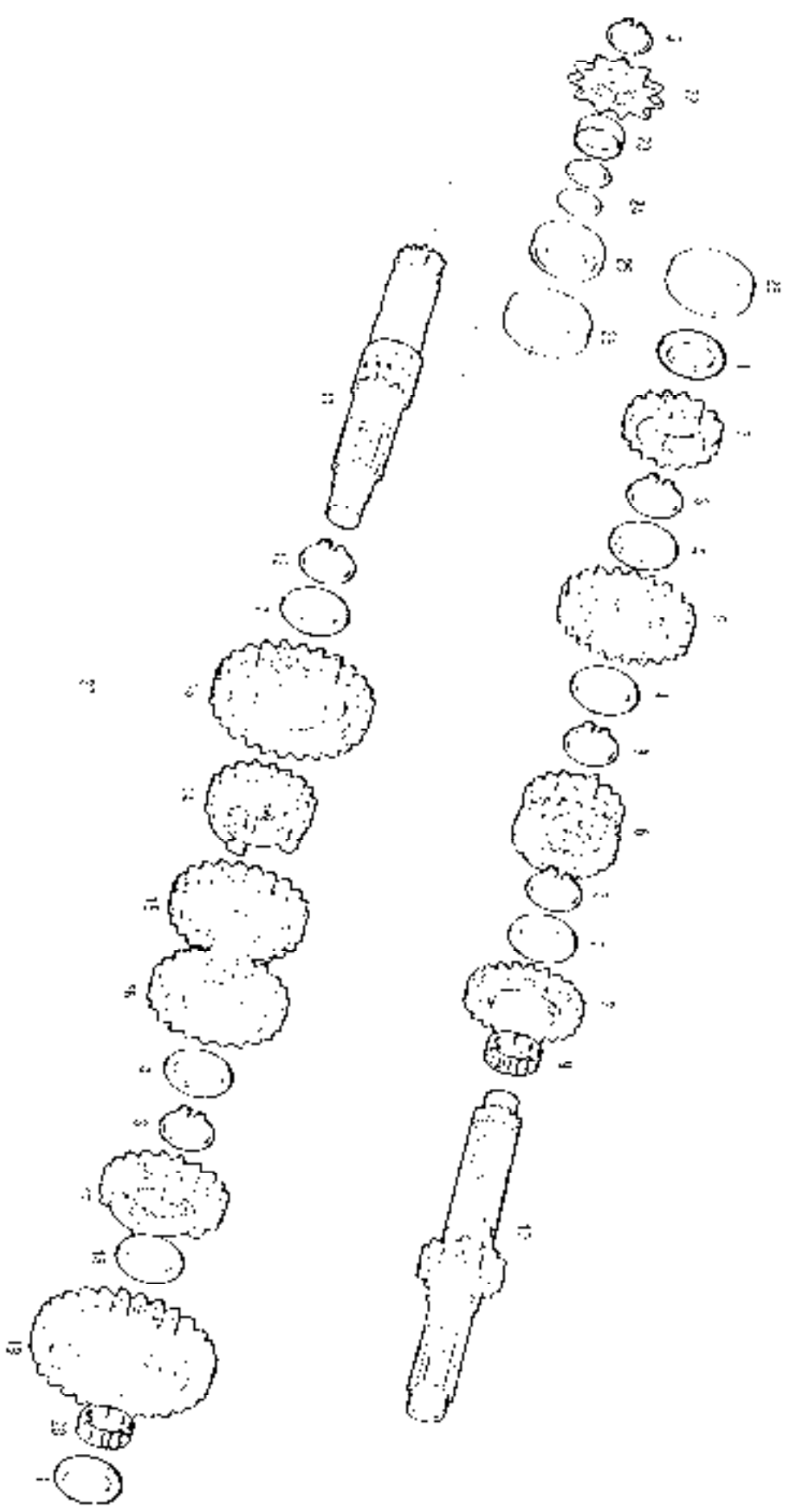
Bombas aceite / Oil pumps



N°	DESCRIPCION	ENE 400 cc.	C. unid.
1	BOCICHE CIRCULO ACEITE F4COP0122560	MFS400122560	5
2	APARDELA TAPAFERR	T0306000	5
3	DISTRIBUIDOR ACEITE OIL DISTRIBUTOR	MFS400122560	1
4	TOPILLO RACORD F4COP01224	MFS4001224	1
5	APARDELA WASHPIV	T0301115	2
6	CIRCUPO CIRCLIP	MFS100122405	1
7	APARDELA WASHER	S7130705	1
8	ROTORA OIL PUMP OIL PUMP	MFS400122450	2
9	COJINETE FRASES FOR BUSH BLARING	MFS100122505	2
10	TOPILLO OXAS 6X55 SCREW	T0306000	1
11	ROTORA MOTOR ACEITE OIL PUMP PUMPA	MFS400122400	1
12	COJINETE ROZ. 5027 BEARING	MFS20616002	1
13	CUFRPO ROTOR ACEITE PRESION. OIL PUMP BODY	MFS100122230	1
14	[REDACTED]	MFS400122105	1
15	APARDELA OIL PUMP BASKET	MFS400122410	1
17	CASQUILLO CENTRADOR. CENTER BUSHING	MFS400122300	1
18	EJE BOMBA ACEITE OIL PUMP SHAFT	MFS400122300	1
19	ROTORA BOMBA PETORNO RETURN OF ROTOR	[REDACTED]	1
20	ROTORA MOTOR ACEITE OIL PUMP RETURN OF PUMP COVER O RING	MFS400122100	1
21	TAPA ROTOR ACEITE RETORNO OIL PUMP COVER	MFS400122100	1
22	ALLEN 6X55 ALLEN BOLT 6X55	T0306000	1
23	ALLEN 6X45 ALLEN BOLT 6X45	T0306000	1
24	MEJILLA APRETTADOR FILTRO ACEITE OIL FILTER SPRING	MFS400122560	1
25	FILTRO ACEITE OIL FILTER	MFS400122560	1
26	ROTORA TAPA FILTRO ACEITE OIL FILTER COVER O RING	MFS100122100	1
27	ROTORA TAPA MOTOR ACEITE OIL MOTOR COVER O RING	MFS400122100	1
28	TAPA FILTRO ACEITE OIL FILTER COVER	[REDACTED]	1
29	ALLEN 6X55 ALLEN BOLT 6X55	MFS400122560	1
30	ALLEN 6X55 ALLEN BOLT 6X55	T0306000	1
31	TOPILLO ESPECIAL ALME SPECIAL SCREW 1/8	T0306108	1
32	ALLEN 6X55 ALLEN BOLT 6X55	T0306000	1
	[REDACTED]	[REDACTED]	
	[REDACTED]	[REDACTED]	

N°	DESCRIPCION	UNID. 400 car.	Cant.
1	OTC PEDAL CAMBIO - GEAR LEVER SET	ME25002500269	1
2	ESCOPPIO PUNTA PEDAL 6X15 - LEVER END BRACKET	ME25003000030	1
3	PUNTERA PEDAL CAMBIO - GEAR LEVER END	ME25003000031	1
4	MULLILL PUNTA PUNTA CAMBIO - GEAR LEVER END SPRING	ME25003000029	1
5	ESCOPPIO PUNTA - HEXAGONAL BOLT 6X25	T01300025	1
7	PEDAL CAMBIO - GEAR LEVER	ML25003000026	1
8	SELGER 12X13X11 FASE SELECTOR - REEGER 12X11	MF25003000035	1
9	CUF - CIGUILLAS 6 - 5-6 FORN A.M.S	MF54011300045	1
10	HORNILLAS 1 - SHIF FORK SET	ME25003000038	1
11	ESCOPPIO HORNILLAS 2 - CULSUCHIMOROLLO - SHIF FORK BEARING	MF25003000055	1
12	HORNILLAS 1 - 3-4 - SHIF FORK 12-3-4	ME25003000038	2
13	ESCOPPIO HORNILLAS 1 - 2-3-4 FORN A.M.S	ME25003000044	1
14	ESCOPPIO HORNILLAS 1 - SHIF FORK	MF54001300031	1
15	ESCOPPIO HORNILLAS 1 - CULSUCHIMOROLLO - SHIF FORK BEARING	ME25003000034	1
16	HORNILLAS 1 - 2-3-4 - SHIF FORK - GEAR FASTEN SPRING	MF54011300039	1
17	ESCOPPIO HORNILLAS - GEAR FASTEN	ME25003000033	1
18	ESCOPPIO PLATA VUELTA 1 - 2-3-4 - GEAR BUSHING	MF54001300047	1
19	ESCOPPIO HORNILLAS	T03000038	1
21	RETEN SELECTOR 12 227 - SEAL 12-227	ME25003000016	1
22	CASCO FASE SELECTOR - AXES BUSHING	ME25013000030	1
23	ESCOPPIO HORNILLAS - SELECTOR AXES	ML25003000038	1
24	ESCOPPIO HORNILLAS - SELECTOR SPRING SPRING	MF25003000042	1
25	ESCOPPIO HORNILLAS - SELECTOR SPRING	ME25003000039	1
26	ESCOPPIO HORNILLAS - ESCOPPIO	ME25003000036	1
27	ESCOPPIO HORNILLAS - ESCOPPIO - SCOPPIO CENTER	ML25003000041	1
28	ESCOPPIO HORNILLAS - SELECTOR SPRING	MF25003000035	1
29	ESCOPPIO HORNILLAS - GEAR FASTEN SET	MF540113000330	1

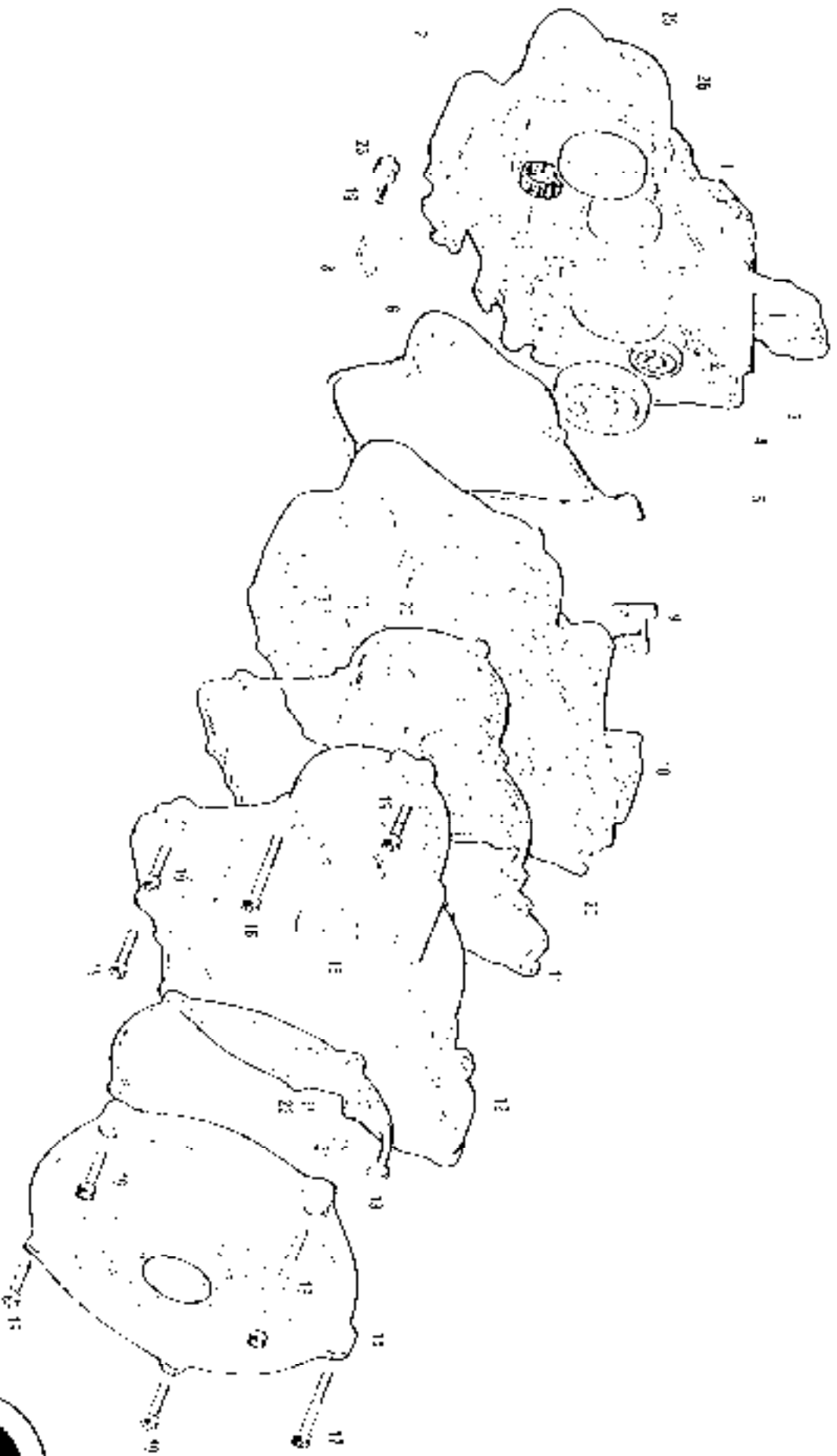
Engranajes cambio / Gear set



N°	DESCRIPCION	EST. 400 c.c.	Cant.
1	ARMONETA 18x50x0.6 - 18X50X0.6 WASHER	1-10318-10	
2	PINON PRIMARIO I PRIMARIO II PINION	ME25636071	
3	CIRCLIP D.25 DIN 471 HERRAJUDO - DIN 471 CIRCLIP	ME25636084	
4	ARMONILLA 31.5x 25x22x1 - ESTRIADA 31.5x25x22x1 GROUNDING WASHER	ME25636091	
5	PINON PRIMARIO V PRIMARIO VI PINION	ME25636074	
6	PINON PRIMARIO IV IV PRIMARIO III AND IV PINION	ME25636072	
7	ARMONILLA 25.2x31.5x1 CAMBIO 1-25 2x31.5x1 GEAR WASHER	ME25636017	
8	PINON PRIMARIO V PRIMARIO VI PINION	ME25636073	
9	COJINETE AGUJAS K25-29-10 - K25-29-10 NEEDLES BEARING	M025615033	
10	EJE PRIMARIO - PRIMARY AXIS	ME25636070	
11	EJE SECUNDARIO - SECONDARY AXIS	ME25636075	
12	CIRCLIP D.25 D N 983 - DIN 983 CIRCLIP	ME25636095	
13	PINON SECUNDARIO I - SECONDARY I PINION	ME25636077	
14	PINON SECUNDARIO VI - SECONDARY VI PINION	ME25636081	
15	PINON SECUNDARIO II - SECONDARY II PINION	ME25636078	
16	PINON SECUNDARIO IV - SECONDARY IV PINION	ME25636079	
17	PINON SECUNDARIO V - SECONDARY V PINION	ME25636080	
18	ARMONETA 18x38x2x1 CAMBIO - 18 38x2x1 GEAR WASHER	ME25636016	
19	PINON SECUNDARIO I - SECONDARY I PINION	ME25636076	
20	RODAMIENTO AGUJAS K20x24x10 - AGUJAS 15 NEEDLES BEARING	ME25636098	
22	PINON SALIDA 7 - 1.1 21x17x1 PINION	ME25636075	
23	DOCTA RFTEN SALIDA CAMBIO - GEAR EXIT SEAL	ME25636018	
24	TORICA 25x2 FBR PINON SALIDA - EXT PINION SEAL	ME256322035	
25	RETEN 30x40x7 - 30X40X7 SEAL	KIL25635024	
26	RODAMIENTO CAMBIO 8705 77 - GEAR 8705 BEARING	ME25636096	
27	GRUPO CAMBIO COMPLETO - GEAR SET	ME25636012	
28	COJINETE 6805 22 CAMBIO - GEAR 6805 BEARING	ME25636017	

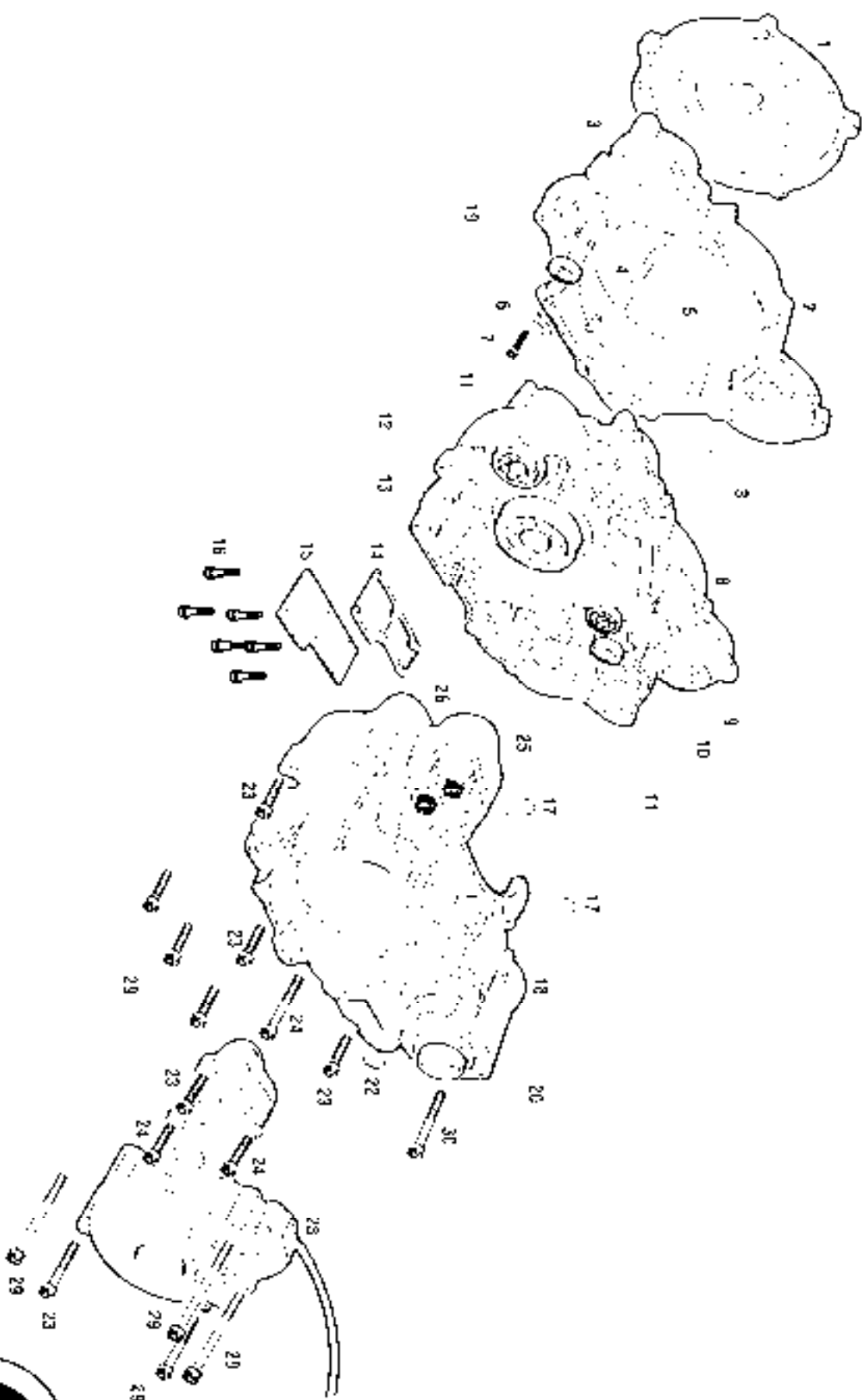
Motor 4

Carter derecho / Right crankcase



N°	DESCRIPTION	REF. 400 c.c.	Cam.
1	CARTER 206ERCC LEFT CARTER	MF540011001	
2	COMPLETO HORN 2 HORN 2 REFRANG	ME23838235	
3	ARMADILLO CENTRAL C. WASHER	MF540011200	
4	RODANTE 6003 C4 6003 C4 BEARING	MF540011200	
5	COMPLTE 6003 C4 6003 C4 BEARING	MF540011200	
6	C/O CARTRAS OPTURACION PASO ACEITE. C/O OPTURACION REED INT	MF540011000	
7	ARMADILLO PASO ALLEA BOLT	T02303020	2
8	C/O CARTER CENTRAL CENTRAL UNPAKCASE GASKET	MF540011400	
9	CARTER OLEO C/O RIGHT CRANKCASE	MF540011000	
10	UNTA TAPA FIMBRIOLE. C/O TOP COVER GASKET	MF540011000	
11	TAPA FIMBRIOLE. C/O TOP COVER	MF540011000	
12	C/O TAPA DISCOS EMBRAGUE DISCS COVER GASKET	MF540011000	
13	TAPA DISCOS EMBRAGUE DISCS COVER GASKET	MF540011000	
14	RETEN 20 20 20 20 20 20 SEAL	ME23838235	
15	ALLET 3x 20 3x 20 ALLEY BOLT	T02303030	
16	ALLET 3x 20 3x 20 ALLEY BOLT	T02303030	
17	ALLET 3x 20 3x 20 ALLEY BOLT	T02303030	
18	ALLET 3x 20 3x 20 ALLEY BOLT	T02303030	
19	ALLET 3x 20 3x 20 ALLEY BOLT	T02303030	
20	CASQUILLO CENTRAL C/O CARTER. C/O UNPAKCASE WASHER	ML25010018	3
21	TORNILLO CENTRAL C/O CARTER. C/O UNPAKCASE WASHER	MF540011000	
22	C/O TORNILLO CENTRAL C/O CARTER. C/O UNPAKCASE WASHER	MF540011000	
23	COMPLTE 6003 C4 6003 C4 BEARING	MF540011000	
24	COMPLTE 6003 C4 6003 C4 BEARING	MF540011000	
25	COMPLTE 6003 C4 6003 C4 BEARING	MF540011000	
26	COMPLTE 6003 C4 6003 C4 BEARING	MF540011000	

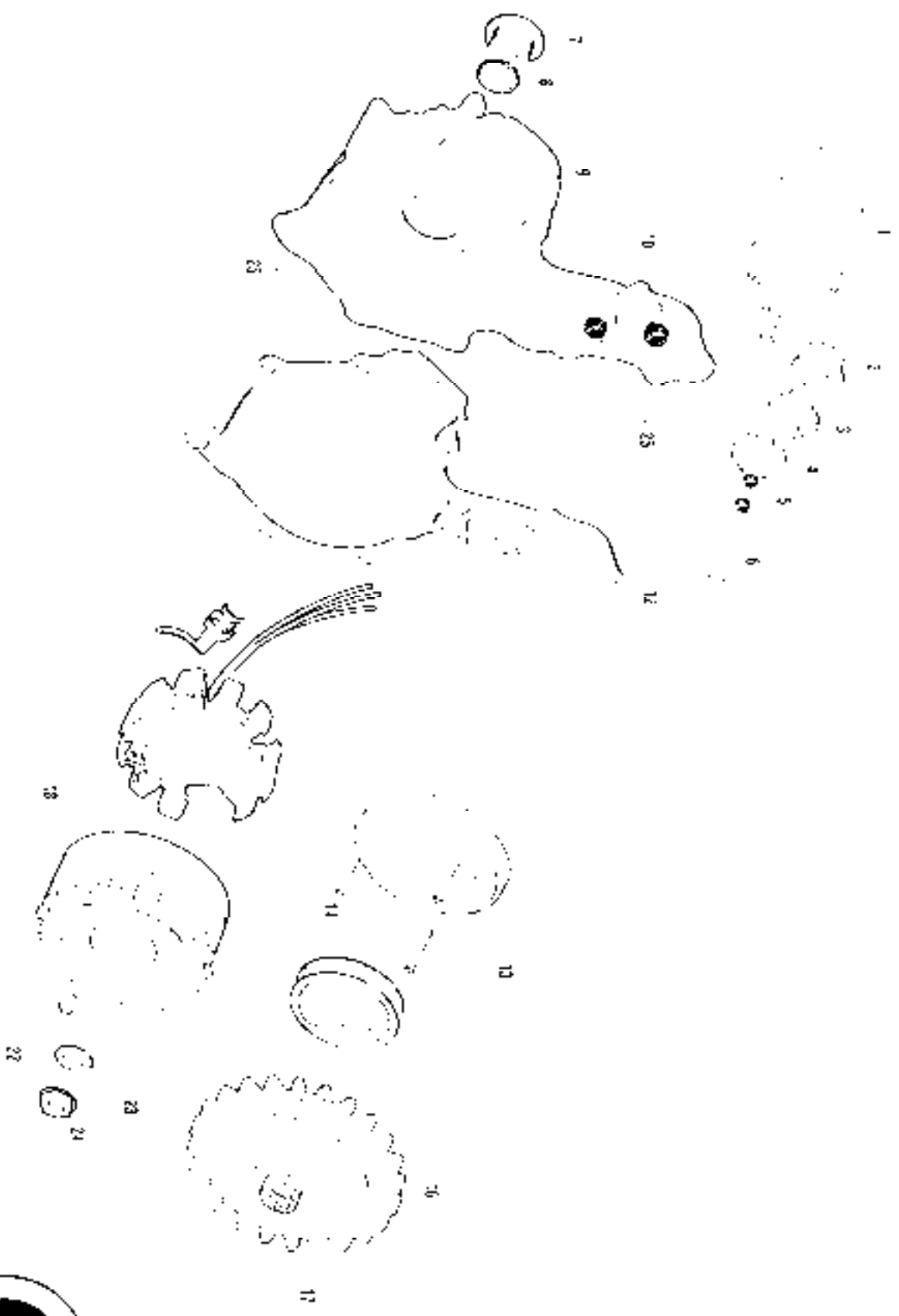
Carter izquierdo / Left crankcase



N°	DESCRIPCIÓN	EST. 400 cc.	Cant.
1	TAPA DISCOS LMBHAGUE	ME25636009	1
2	TAPA EMBRAGUE	ME540012600	1
3	CASQUILLO	ME25613618	2
4	CONDUCTO ACEITE	MFS400110003	1
5	TORICA	MFS100126055	1
6	CHAPA	ME540012019	1
7	ALLAN 55	TC300075	1
8	CARTER FRECCING	MFS400110000	1
9	RODAMIENTO 6205 C3 SKF	ME25636050	1
10	RODAMIENTO 6203 2Z C3 SKF	ME5400136183	1
11	RODAMIENTO 6303 C3 SKF	MFS400110000	1
12	RODAMIENTO 6306 C1 KOYO	ME256136063	1
13	UNTA TAPA ACCESO INFERIOR CARTER	MFS100121232	1
14	TAPA ACCESO INFERIOR CARTER	ME540012022	1
15	LIS 6X16	TC300075	2
16	CASQUILLO	MFS400110068	1
17	CARTER IZQUIERDO	MFS400110001	1
18	DETEC.	MFS400122008	1
19	RETER.	ME25636046	2
20	ALLEN 6X70	TC300075	1
21	PISTON 121222 EJE SELECTOR	ME25636048	1
22	ALLEN 6X30	TC300075	1
23	ALLEN 6X25	TC300075	2
24	JAUJA DE AGUJAS HK810 INA	MFS400120191	2
25	JAUJA DE AGUJAS HK1010 INA	MFS400126022	2
26	TAPA VIGILANTE MAGNETICO	MFS400110004	1
27	ALLEN 6X30	TC300075	2
28	ALLEN 6X30	TC300075	1

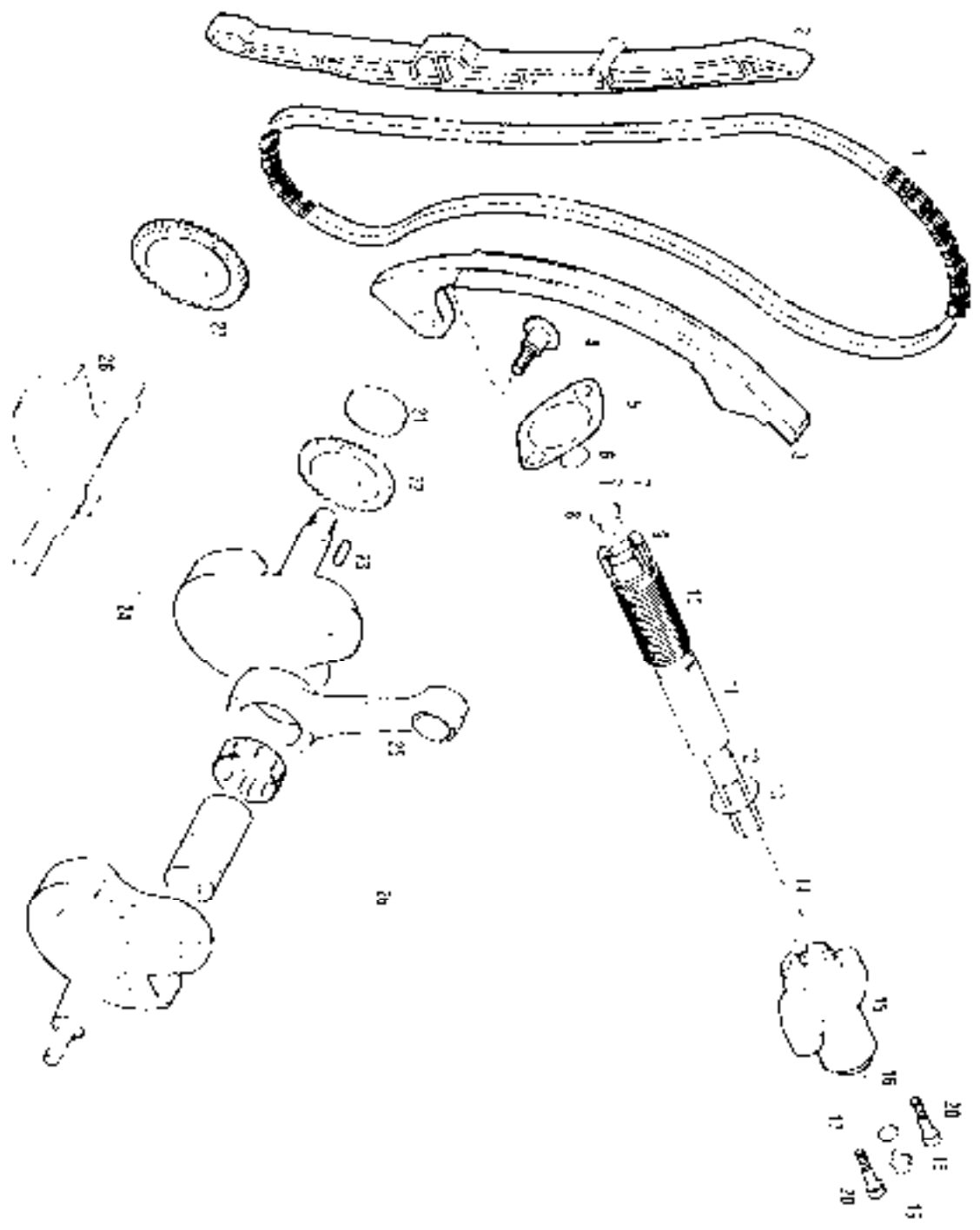
Motor 6

Encendido / Ignition



N	DESCRIPCIÓN	EST. 4001 CA.	Cant.
1	MOTOR ARRANQUE STARTER/ONE	MF5400126560	1
2	PISTON PAVON	MF5400126510	1
3	PISTON PAVON 2	MF5400126520	1
4	PISTON PAVON 3	MF5400126530	1
5	CONJUNTO DE AGUJAS HK 100	MF5400126502	2
6	ELÉ PINDU ARRANQUE STARTER ENCAJE AXIS	MF5400126505	1
7	TAPON TAPA ENCAJENDO STARTER COVER TAP	MF5400126501	1
8	COJIN CRANK	MF5400126504	1
9	TAPA ENCAJENDO STARTER COVER	MF5400126502	1
10	BOLA DE AGUJAS HK 100 HELDLES BEARING	MF5400126522	2
11	JUNTA TAPA ENCAJENDO STARTER COVER GASKET	MF5400144004	1
12	AGUJAS UNION MAIN PINS	MF5400126502	1
13	ALLEN BOLT	T8308011	2
14	CORONA DE ARRANQUE STARTER	MF5400126516.2	1
15	AGUJAS AGUJAS. MFFD MF59FA000	MF5400170020	1
16	ROLANTE MAGNETICO MAGNETIC ROLLER	MF5400134005	1
17	CHAVETA VOLANTE MOBILE PIN	MF5400134016	1
18	ARRANQUE PUSHIN	MF5400126512	1
19	TUERCA VOLANTE MOBILE NUT	MF5400134011	1
20	CASQUILLO CENTRADOR TAPA ENCAJENDO COVER STARTER CLIMCH	MF5400126500	2

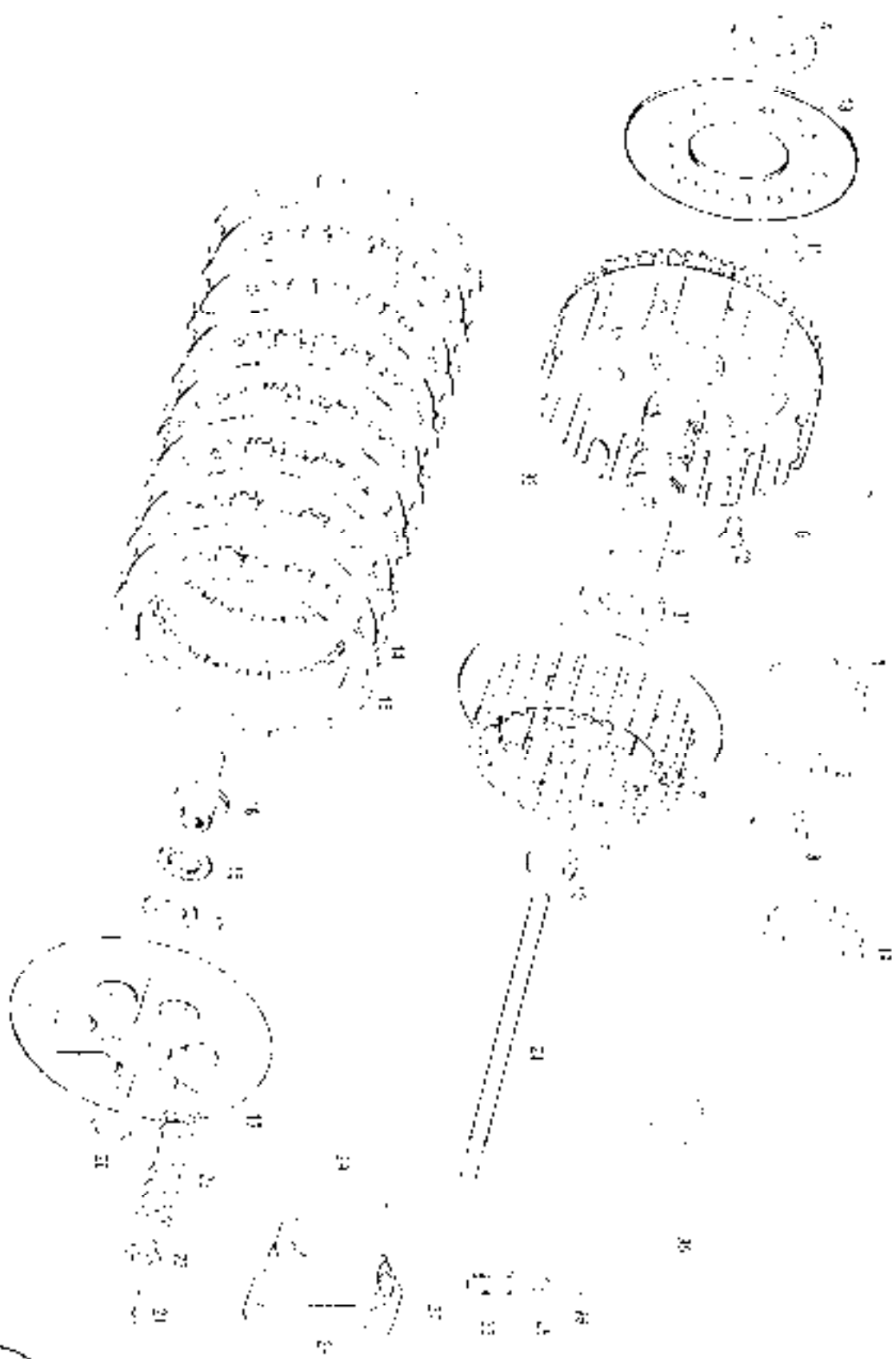
Cigüeñal / Crankshaft



24

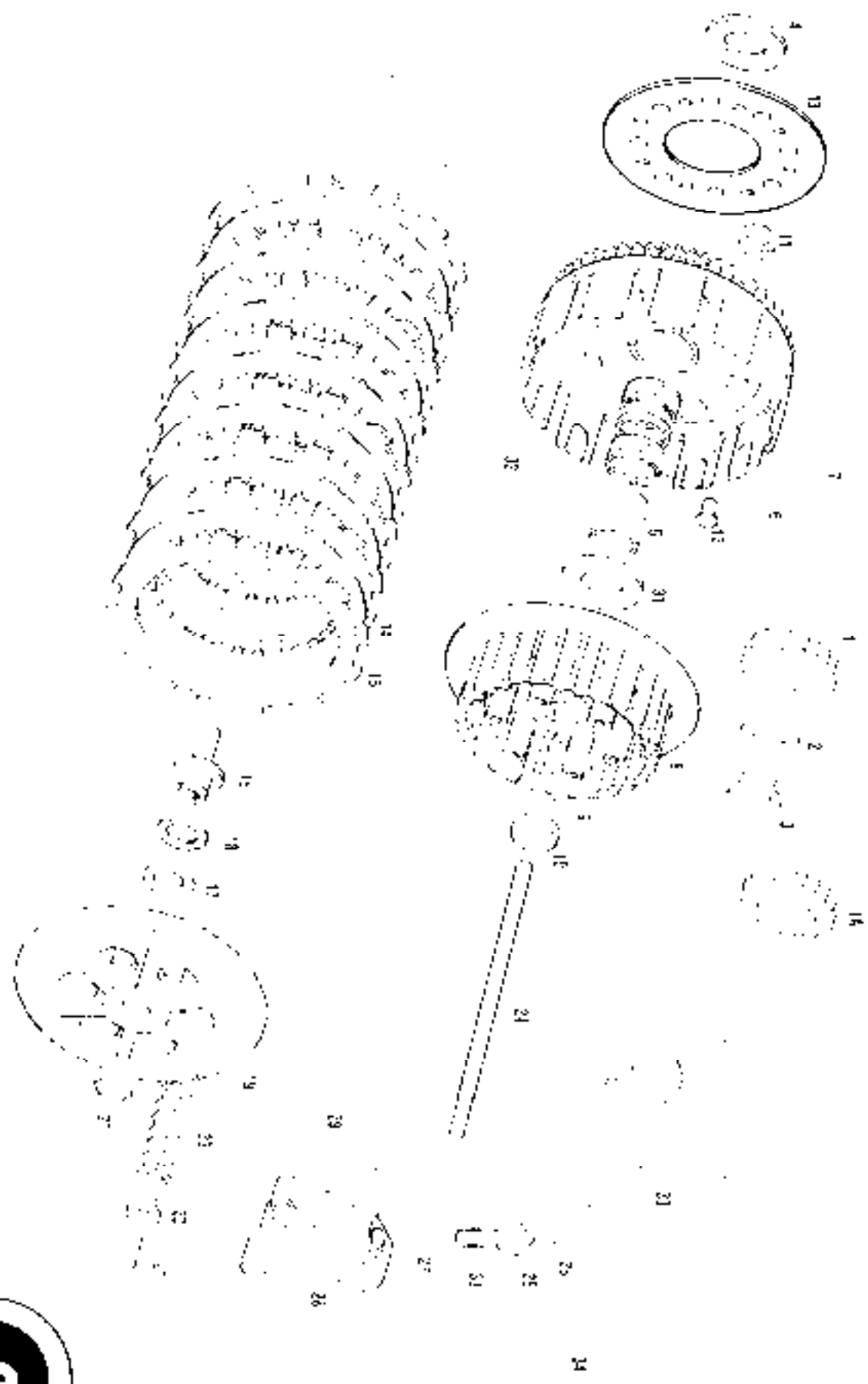
N°	DESCRIPCION	UNID. 400 c.c.	Cant.
1	CADENA D STRIBUCION DISTRIBUCION CH4A	MFS400116360	1
2	GUIA CADENA TRASERA REAR CHAIN GUIDE	MFS400116363	1
3	GUIA CADENA DELANTERA FRONT CHAIN GUIDE	MFS400116362	1
4	TORNILLO GUIA CADENA CHAIN GUIDE SCREW	MFS400116365	1
5	JUNTA TENSOR CADENA CHAIN TENSOR GASKET	MFS400116425	1
6	TOHICA OHRIG	MFS400116411	1
7	PASADOR ELASTICO DEX12 ECG66	MFS400116405	1
8	APRETIADOR TENSOR CADENA DISTHEBLCON	MFS400116403	1
9	CRUZ TENSOR CADEA DISTRIBUCION	MFS400116402	1
10	MUELLO TORSION TENSOR CADENA	MFS400116410	1
11	TUBO TENSOR CADENA DISTRIBUCION	MFS400116404	1
12	TUERCA EP JACOR TENSOR CADENA	MFS400116405	1
13	ANILLO ELASTICO TENSOR CADENA	MFS400116411	1
14	TORNILLO EMPUJADOR TENSOR CADENA	MFS400116406	1
15	TENSOR CADENA CHAIN TENSOR	MFS400116400	1
16	PLACUA PLENADO TENSOR CADENA	MFS400116408	1
17	ARANDELA PAPI.	MFS400116407	1
18	ARANDELA	T4306013	1
19	TORNILLO HEXAGONAL GX8	TC200008	1
20	ALLEN GX25	TC3006025	1
21	PINON DISTRIBUCION	MFS400116361	1
22	PINON MANDO EJE DE BALANCE	MFS400116370	1
23	CHAVETA FJACION PINON	MFS400116414	1
24	CHAVETA PIN	MFS400116422	1
25	BIELA CONNECTING ROD	MFS400116400	1
26	CONJUNTO CIGLENA	MFS400116400	1
27	PINON EJE DE BALANCE	MFS400116402	1
28	EJE BALANCE HUCAING AXIS	MFS400116422	1
29	CONJUNTO TENSOR CADENA	MFS400116420	1

Embrague / Clutch



N°	DESCRIPCION	EST. 400 cc.	Cant.
1	PINON CUEN TRANS PPR1 - PRIMARY TRANSMISSION CHAIN SHAFT PIVOT	ME25612084	1
14	PINON CUEN TRANS PPR3 - PRM TRANS CRANK SHAFT PIN	ME2560112034	1
2	ARANDILLA DESLIZADA DE 20 175 WASHER 20 175	ME256632019	1
3	TUERCA BLOQUEO PINON CIGUEÑAL CRANK SHAFT PINION LOCKING NUT	ME256632018	1
4	ARAND CALIFANA ELIBR WASHER	ME2560020011	1
5	CASQUILLO CAMPANA EMBRAGUE PRIMARIY DRIVEN GEAR BUSHING	ME2560132042	1
6	COXINETE CAMPANA EMBRAGUE PRIMARIY DRIVEN GEAR BEARING	ME256632029	2
7	CTO. PINON Y CORONA PINION GFT	ME25600132003	1
8	CUBO EMBRAGUE - CLUTCH BOSS	ME256632005	1
9	ARANDITA PRECINTO EMBRAGUE CLUTCH LOCK WASHER	ME256632022	1
10	TUERCA FIJ. CURO EMBRAGUE CLUTCH BOSS NUT	ME256632028	1
11	SLIPTELOCK CORONA SELENITE LOCK	ME229932018	8
12	PERNOSILS CAMPANA EMBRAGUE PRIMARY DRIVEN GEAR PIVOTS	ME2560132019	8
13	ARANDITA CORCHA EMBRAGUE CLUTCH BOSS WASHER	ME2560132009	1
14	DISCO EMBRAGUE HIERRO. HOY CLUTCH DISK	ME256632031	1
15	DISCO EMBRAGUE FORRADO. COVERED CLUTCH DISK	ME256632007	8
16	BOLSA EMBRAGUE CLUTCH PIA	ME256032014	1
17	ARANDITA COXINETE BUSHING WASHER	ME256632016	1
18	AGUJARGUA VALV. ESCAPE NEEDLES BEARING	ME256632046	1
19	COXINETE PRLYSA PRESURE PLATE BEARING	ME256632016	1
20	SPROCKET 15 EMBRAGUE CLUTCH SPROCKET 15	ME256632017	1
21	ALER. AXON 1A EMBRAGUE CART SUSP. AXON BOLT CY20	T03300120	1
22	CASO BUELLE EMBRAGUE ALLY 200 ALLY BOLT CLUTCH SPRING BUSHING	ME2560031009	6
23	BUELLE EMBRAGUE CLUTCH SPRING	ME256632015	6
24	VARILAS EMBRAGUE CLUTCH ROD	ME2560132049 2	1
25	TARON SAUSTRADOR BLEEDOFF OMP	BE256012055	1
26	SAUSTRADOR BLEEDER	BE256012066	1
27	ARANDILLA ATAGULLO ROSE WASHER	BE25602057	1
28	PISTON EMBRAGUE HIERRO - METALLIC CLUTCH CALIPER	ME256632025	1
29	TORN. CASCOMBA EMBRAGUE CLUTCH PIVOT O-RING	ME256632024	1

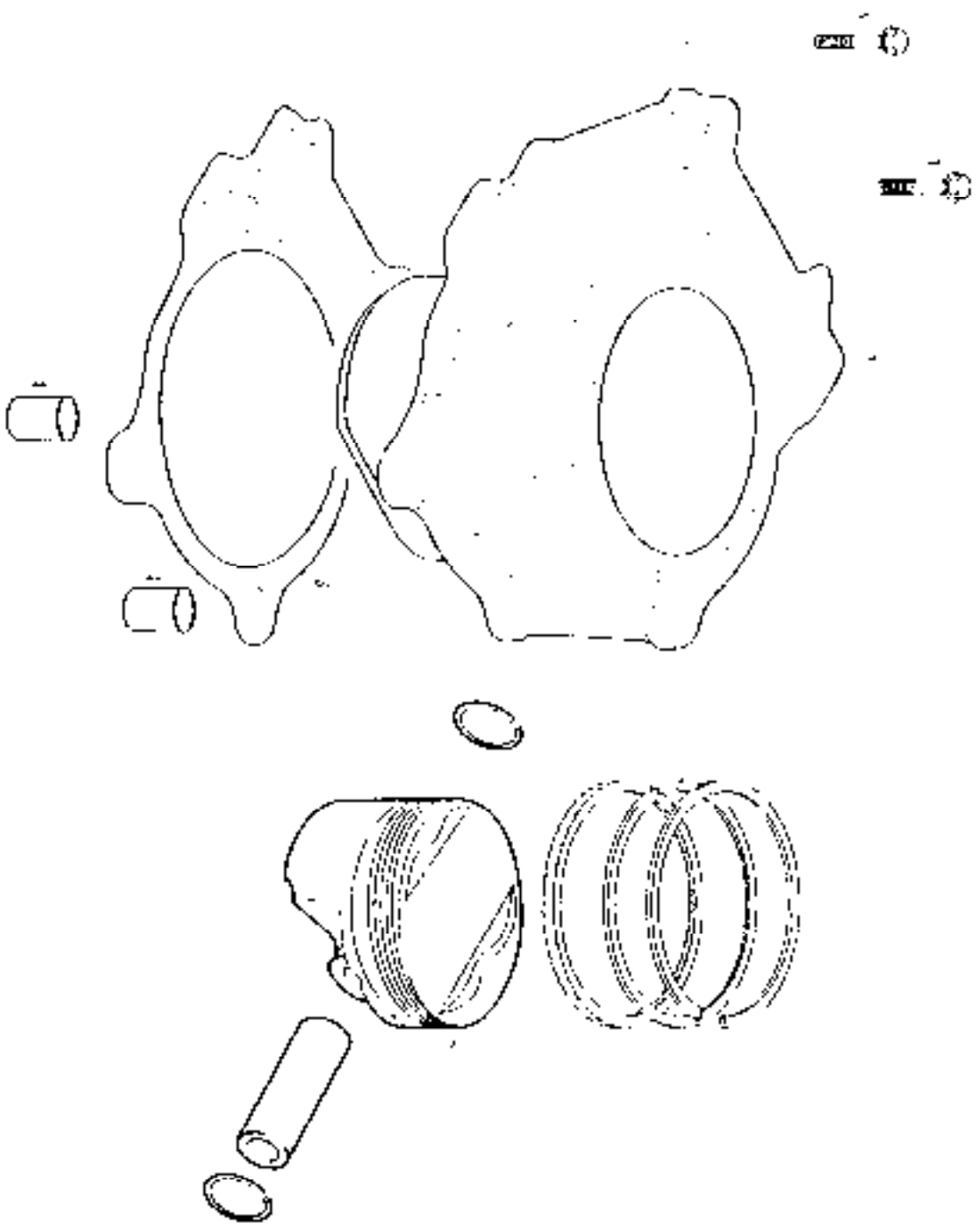
Embrague / Clutch



N°	DESCRIPCION	FSE 400 cc.	Cant.
30	KIT REPARACION PINZA EMBRAGUE - CLUTCH CALIPER KIT	DE25622050	1
31	ARANDELA CAMPANA EMBRAGUE ENDURO 2T - CLUTCH 2T BELL WASHER	MF25633011	1
32	CASQUILLO COUINETIC - BUSHINGS BLARING	MFS400132036	1
33	RACORD PINZA EMBRAGUE - RACORD CLUTCH CALIPER	M010300000	1
34	CONJUNTO PINZA EMBRAGUE FSE - FSE CLUTCH CALIPER KIT	MFS400132026	1

Motor 9

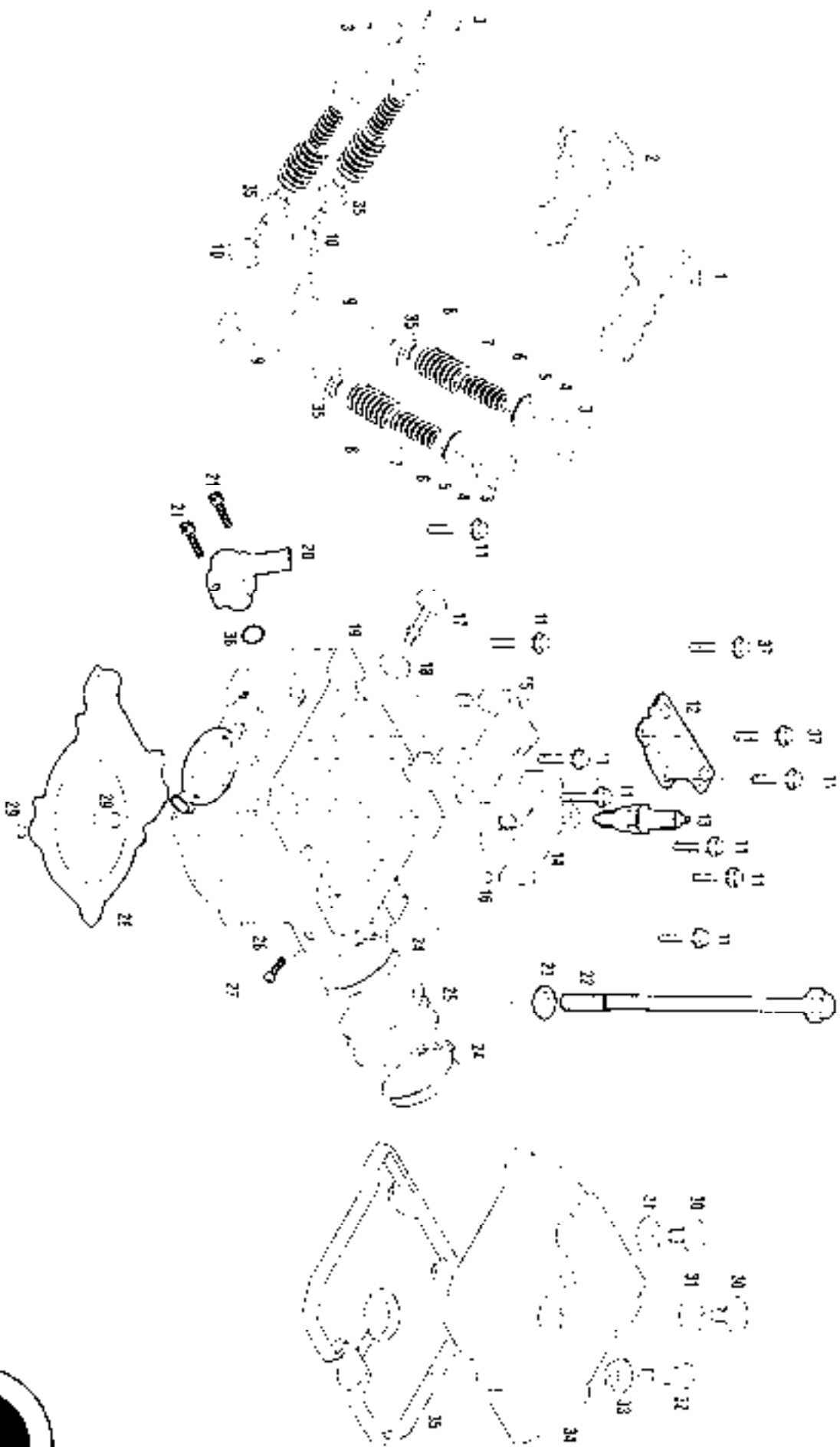
Cilindro / Cylinder



N°	DESCRIPCION	P/NF 400 c.c.	Cant.
1	10HNL1015RFG AL EX25 . SPECIAL SCHEM V A V B	TC0000025	2
2	CILINDRO EC25C411 LG426 AT CYLINDER	M15400115002	1
3	ALTA CILINDRO FORNIT EC001 AT CILINDRO CRANKFT	M15400114000	1
4	CASCULLO CERRADOR CULATA BUSHING	M1540011001E	2
7	PISTON C100AT FORNIT PISTON	M1540011000G	1
9A	CONJUNTO PISTON A PISTON SET	M1540011012U	1
9B	CONJUNTO PISTON B PISTON SET	M1540011002I	1
9C	CONJUNTO PISTON C PISTON SET	M1540011007Z	1
9D	CONJUNTO PISTON D PISTON SET	M15400110023	1

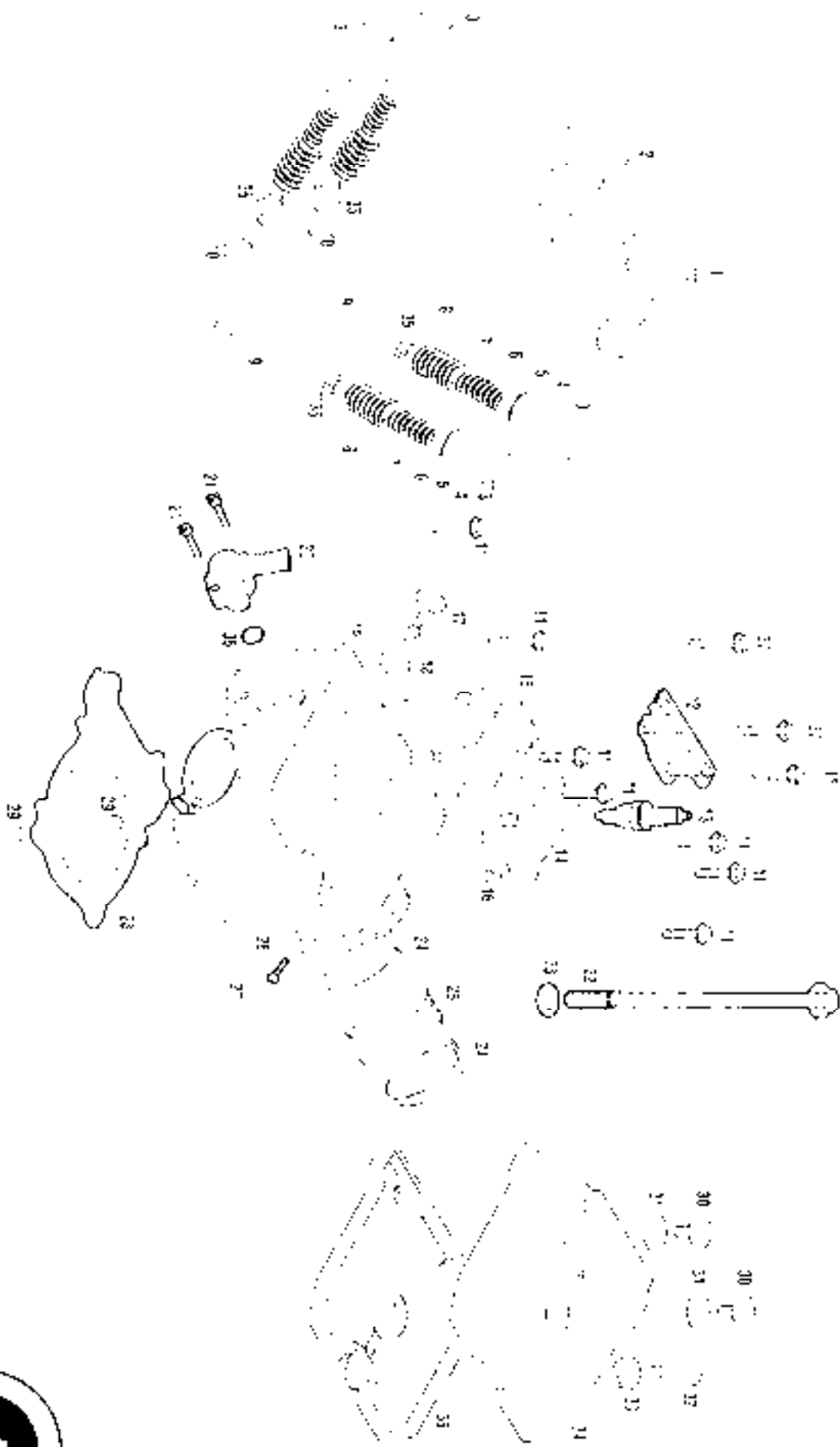
Motor 10

Culata / Cylinder head



N°	DESCRIPCION	FSF 400 CC.	Cant.
1	ARROJ DE LEVAS ADMISION INTAKE CAMSHAFT	MFS400116353	1
2	ARBOL DE LEVAS ESCAPE EXHAUST CAMSHAFT	MFS400116354	1
3	VASO EMPUJADOR VÁLVULA	MFS400116300	4
4	PASTILLA REGULADORA VÁLVULA VALVE BASE PADS	MFS400116044	4
5	SEPIÓN CONO FSF400 FSF400 CONE	MFS400116046	4
6	PLATILLO SEMICONO - SEMI-CONE VALVE WORK TABLE	MFS400116047	4
7	MUELTA INFERIOR INTERIOR SPRING	MFS400116059	4
8	MUELLE VÁLVULA EXTERIOR EXTERIOR VALVE SPRING	MFS400116058	4
9	VÁLVULA ADMISION INTAKE VALVE	MFS400116043	2
10	VÁLVULA ESCAPE EXHAUST VALVE	MFS400116015	2
11	TORNILLO 6X30 16X40 BOLT	MFS400116351	8
12	GUIA CADENA DISTRIBUCION SUPERIOR UPPER DISTRIBUTION GUIDE CHAIN	MFS400116364	1
13	BUEYINCA CP8 E	MFS400116309	1
14	PUNTE ARBOL LEVAS ADMISION	MFS400116357	1
15	PUNTE ARBOL LEVAS ESCAPE	MFS400116358	1
16	CASQUILLO CENTRADOR TAPA ARBOL LEVAS	MFS400116350	1
17	TORNILLO ESPECIAL CULATA CYLINDER HEAD SPECIAL SCREW	MFS400116067	1
18	ARANDELA	14001126	1
19	CULATA	MFS400116600	1
20	SALIDA AGUA	MFS400116030	1
21	ALFEN VFORO	MFS400116134	2
22	TORNILLO	T0201070	1
23	ARANDELA 10.5x19x2 10.5x19x2 WASHER	T4001019	1
24	AGRAZADERA 40-60 40-60 CLAMP	BE25E1003	2
25	TUBERA ADMISION CC 400-41 INTAKE	MFS400116131	1
26	ARANDELA 8X10X1.5 8X10X1.5 WASHER	T4005016	1
27	ALLEN	T0508010	1
28	ALFEN CULATA	MFS400114000	1
29	CASQUILLO CENTRADOR CULATA	MFS400116388	2
30	TORNILLO ESPECIAL EXTERIOR EXTERIOR SPECIAL SCREW	F0207017	2
31	ARANDELA 11x25x2 11x25x2 WASHER	T4001125	2

Culata / Cylinder head



N°	DESCRIPCION	PSE 400 c.c.	Cant.
2	ARANDELA 25.8x17.5x0.5 BOMBA AGUA 25.8x17.5x0.5 WASHER	1403625000	1
3	JUEGO REFINES SEAL SET	ME25G001	1
4	CURBINA BOMBA AGUA WATER PUMP IMPELLER	41.25611007	1
5	ARANDILLA 6X11X1 6X10X1 WASHER	T4005010	1
6	ALLEN 6X16 6X16 ALLEN BOLT	T0500016	1
7	JUNTA TAPA BOMBA AGUA WATER PUMP COVER GASKET	MFS410144008	1
8	TAPA BOMBA AGUA WATER PUMP COVER	MFS250210003	1
9	ALLEN 6X20 6X20 ALLEN BOLT	T0300020	3
10	ULS 6X10 6X10 ULS	T0506010	1
11	ARANDELA FIBRA 5MM 6MM WASHER	T4003010	1

Motor 12

GAS GAS

The logo for Gas Gas, featuring the word "GAS" in a stylized, bold, italicized font with a thick outline.

02032201000

GAS GAS MOTOS, S.A.

C/ UNICEF n.º 17 Polígono Industrial Formentorca - 17190 Sallí (Gerona) SPAIN - Tel: +34 902 47 62 54 Fax: +34 902 47 61 60
E-mail: officegg@gasgasmotos.es / partsggg@gasgasmotos.es Web: www.gasgasmotos.es

Bomba agua / Water pump

